



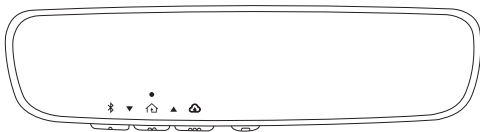
CONGRATULATIONS! YOUR NEW AUTO-DIMMING MIRROR COMES INTEGRATED WITH HOMELINK®.

AUTO-DIMMING

During nighttime driving, the auto-dimming feature senses distracting glare from vehicle headlights behind you and automatically dims to eliminate glare and preserve your vision.

HOMELINK

HomeLink is the most widely used and trusted car-to-home automation system that uses RF and wireless cloud-based transmission to operate gates, garage doors, home lighting, thermostats, smart door locks, security systems, and other compatible home automation devices.



HomeLink provides a convenient way to program up to three hand-held radio-frequency remotes to the mirror.

HOMELINK CONNECT™

Take advantage of cloud-based wireless communication with the HomeLink Connect app — a new home automation app that grants drivers access to an increasing array of cloud-based home automation devices.

Once configured, the app pairs with your Bluetooth®-enabled rearview mirror, allowing you to activate compatible home automation devices from the vehicle-integrated HomeLink buttons.

Download and configure the app to control a myriad of individual home automation devices or set up entire home automation "scenes".

1. Open Google Play/App Store
2. Search "HomeLink Connect"
3. Download the app
4. Follow app prompts with the vehicle ignition on to pair with the mirror



Android



iOS

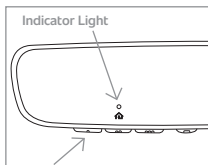


550-0746-000

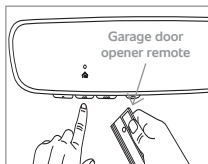
HOMELINK RF PROGRAMMING

The steps below are generic programming instructions; for Genie and Sommer garage door openers please go to the HomeLink website, addressed below.

1. Before programming, press the HomeLink button you would like to program and observe the indicator light. The indicator light will flash orange slowly if ready to program. If not, erase all HomeLink buttons by pressing and holding the two outer HomeLink buttons, releasing only when the indicator light begins to flash after 10 seconds.

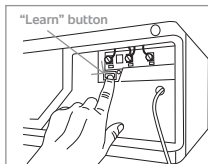


2. Position the hand-held remote (garage door opener remote) 1 – 3 inches (2 – 8 cm) away from the HomeLink button you would like to program.

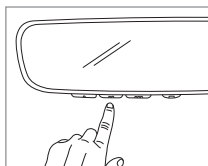


3. While the indicator light is flashing orange, press and hold the hand-held remote (garage door opener remote) button until the indicator light changes from orange to green.

4. Press the HomeLink button that you would like to program and observe the indicator light.



- a. If the indicator light remains constant green, your device should operate when the HomeLink button is pressed. At this point, if your device operates, programming is complete.
- b. If the indicator light rapidly flashes green, press, hold for two seconds and release the HomeLink button up to three times to complete the training process. At this point if your device operates, programming is complete. If the device does not operate, continue to the next step of the programming instructions.



5. At the garage door opener motor (security gate motor, etc.), locate the "learn", "smart", or "program" button. Press and release the button. **Once the button is pressed, there are 30 seconds in which to complete the next step.**
6. Press, hold for two seconds and release the HomeLink button up to three times to complete the training process. Programming should now be complete and your device should operate when the HomeLink button is pressed.



Additional information and programming videos can be found at HomeLink.com, youtube.com/HomeLinkGentex, scanning the QR code to the left, or by calling the toll-free HomeLink-hotline at 1-800-355-3515.

HomeLink® and the HomeLink House® logo are registered trademarks of Gentex Corporation. The Bluetooth® word mark and logos are registered trademarks owned by Bluetooth SIG, Inc. and any use of such marks by Gentex Corporation is under license.