



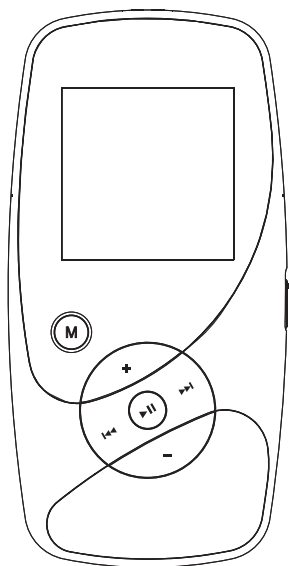
User manual
Guide de l'utilisateur
Manual de usuario

M4001

M4002

MC4001

MC4002



It is important to read this instruction book prior to using your new product for the first time.

Nous vous recommandons de lire ce manuel d'instructions avant d'utiliser votre nouveau produit pour la première fois.

Es importante leer este manual antes de usar por vez primera su equipo.

Contents

Contents	1
----------	---

EN

FCC Information	2
Product Registration	3
For Your Records	3
Service Information	3
Technical Specification	3
Electrical Consumption	3

IMPORTANT SAFETY INSTRUCTION 4

End User License Agreement 5

Before You Begin 8

Unpacking Your Player	8
Computer System Requirements	8
Secure Music Download Requirements	8
Warning	8
Caution	8
Headset Safety	9
Caution While Driving	9
Back up your data	9
Product Registration	9

Software Setup 9

Inserting the Included CD into CD Drive	9
---	---

Connecting to the Computer . . . 10

Connecting the Player to the Computer	10
Charging the Battery	10
Important Battery Information	10
Caution	10

Transferring Files to the Player . . 11

Transferring Files to the Player	11
Transferring Files via Yahoo! Music Jukebox™ (Windows® XP or higher only)	11
Transferring Files via Windows Explorer (Drag-and-drop)	12
In Windows XP (with Windows Media Player 10 or above installed)	12
In Windows 2000 or Windows XP (without Windows Media Player 10 or above installed)	12
Disconnecting Your Player from the Computer	13

General Controls 14

Before you Begin	14
Overview	14
Navigation Display	15
Navigation Menus	15
Selecting What You Want to Play	15

Listening, Viewing and Recording 16

Music Playback	16
Music Playback Display	17
Audiobooks Playback	17
Picture Viewing	18
Video Viewing	18
Video Converter	19
Voice Recording	20
Playback Recorded Voice Recording	21
Line-in Recording	21
Playback Recorded Line-in Recording	21
Deleting Recorded Files	21

My Selections 22

Adding Files to My Selections	22
Playing My Selections	22
Clearing My Selections	22

Player's Menus 23

Accessing the Player's Menus	23
Navigation and Selection	23
Shuffle	23
Repeat	23
DSP	23
Slideshow	24
Skipping	24
Add to MySel	24
Clear MySel	24
Settings	24
System Info	24

Additional Information 25

Tips and Troubleshooting	25
Check for Updates	26
Specifications	26
Hardware	26
USB Drive	26
Software	26

Limited Warranty (U.S.) 27

Limited Warranty (Canada) 28

FCC Information

FCC Information

This device complies with part 15 of the FCC rules. Operation is subject to the following two conditions: (1) This device may not cause harmful interference, and (2) This device must accept any interference received including interference which may cause undesired operation.

This equipment has been tested and found to comply with the limits for a Class B digital device, pursuant to Part 15 of the FCC Rules. These limits are designed to provide reasonable protection against harmful interference in a residential installation. This equipment generates, uses and can radiate radio frequency energy and, if not installed and used in accordance with the instructions, may cause harmful interference to radio communications. However, there is no guarantee that interference will not occur in a particular installation.

In accordance with FCC requirements, changes or modifications not expressly approved by Thomson Inc. could void the user's authority to operate this product.

If this equipment does cause harmful interference to radio or television reception, which can be determined by turning the equipment off and on, the user is encouraged to try to correct the interference by one or more of the following measures:

- Reorient or relocate the receiving antenna.
- Increase the separation between the equipment and receiver.
- Connect the equipment into an outlet on a circuit different from that to which the receiver is connected.
- Consult the dealer or an experienced radio / TV technician for help.

Also, the Federal Communications Commission has prepared a helpful booklet, "How To Identify and Resolve Radio TV Interference Problems." This booklet is available from the U.S. Government Printing Office, Washington, DC 20402. Please specify stock number 004-000-00345-4 when ordering copies.

This Class B digital apparatus complies with Canadian ICES-003.
Cet appareil numérique de la class B est conforme à la norme du NMB-003 du Canada

EN

Have a Blast- Just Not in Your Eardrums
Make sure you turn down the volume on the unit before you put on headphones. Increase the volume to the desired level only after headphones are in place.



 THE LIGHTNING FLASH AND ARROW-HEAD WITHIN THE TRIANGLE IS A WARNING SIGN ALERTING YOU OF "DANGEROUS VOLTAGE" INSIDE THE PRODUCT.	CAUTION RISK OF ELECTRIC SHOCK DO NOT OPEN CAUTION: TO REDUCE THE RISK OF ELECTRIC SHOCK, DO NOT REMOVE COVER (OR BACK). NO USER-SERVICEABLE PARTS INSIDE. REFER SERVICE TO QUALIFIED PERSONNEL.	 THE EXCLAMATION POINT WITHIN THE TRIANGLE IS A WARNING SIGN ALERTING YOU OF IMPORTANT INSTRUCTIONS ACCOMPANYING THE PRODUCT.
SEE MARKING ON BOTTOM / BACK OF PRODUCT		

WARNING: TO PREVENT FIRE OR ELECTRICAL SHOCK HAZARD, DO NOT EXPOSE THIS PRODUCT TO RAIN OR MOISTURE.

	RCA M4001A
---	---------------

Equipment tested for compliance as a complete unit

	RCA M4002A
---	---------------

Equipment tested for compliance as a complete unit

	RCA MC4001A
---	----------------

Equipment tested for compliance as a complete unit

	RCA MC4002A
---	----------------

Equipment tested for compliance as a complete unit

FCC Information

Product Registration

Please fill out the product registration card and return it immediately. Returning this card allows us to contact you if needed. You can go to www.rcaaudiovideo.com for online registration as well.

For Your Records

Keep your sales receipt for proof of purchase to obtain warranty parts and service.

In the event that service should be required, you may need both the model number and the serial number. In the space below, record the date and place of purchase, and the serial number:

Date of Purchase
Place of Purchase
Serial No.

Service Information

This product should be serviced only by those specially trained in appropriate servicing techniques. For instructions on how to obtain service, refer to the warranty included in this Guide.

Technical Specification

Product: Digital Audio Player
Brand: RCA
Model: M4001, M4002, MC4001, MC4002

Electrical Consumption

3.7V Lithium battery (built-in)

IMPORTER
Comercializadora Thomson de México,
S.A. de C.V.
Álvaro Obregón No. 151. Piso 13.
Col. Roma. Delegación Cuauhtémoc
C.P. 06700. México, D.F.
Telefono: 52-55-11-020360
RFC: CTM-980723-K55

This unit may temporarily cease to function if subjected to electrostatic disturbance. To resume normal operation, you may press the RESET button on the back of the player with a non-metal pointed object (e.g. toothpick) to reset the player.

Do not separately recharge, disassemble, incinerate, or expose to high temperatures. Examples of high temperatures that may damage your product include leaving it in a locked car in the summer, or putting it on top of other heat generating electronics devices (such as power amplifiers and computer monitors).

Illustrations contained within this publication are for representation only and subject to change.

The descriptions and characteristics given in this document are given as a general indication and not as a guarantee. In order to provide the highest quality product possible, we reserve the right to make any improvement or modification without prior notice. The English version serves as the final reference on all products and operational details should any discrepancies arise in other languages.

IMPORTANT SAFETY INSTRUCTIONS

PLEASE READ AND SAVE FOR FUTURE REFERENCE

Some of the following information may not apply to your particular product; however, as with any electronic product, precautions should be observed during handling and use.

- Read these instructions.
- Keep these instructions.
- Heed all warnings.
- Follow all instructions.
- Do not use this apparatus near water.
- Clean only with dry cloth.
- Do not block any ventilation openings. Install in accordance with the manufacturer's instructions.
- Do not install near any heat sources such as radiators, heat registers, stoves, or other apparatus (including amplifiers) that produce heat.
- Do not defeat the safety purpose of the polarized or grounding-type plug. A polarized plug has two blades with one wider than the other. A grounding type plug has two blades and a third grounding prong. The wide blade or the third prong is provided for your safety. If the provided plug does not fit into your outlet, consult an electrician for replacement of the obsolete outlet.
- Protect the power cord from being walked on or pinched particularly at plugs, convenience receptacles, and the point where they exit from the apparatus.
- Only use attachments/accessories specified by the manufacturer.
- Use only with the cart, stand, tripod, bracket, or table specified by the manufacturer, or sold with the apparatus. When a cart is used, use caution when moving the cart/apparatus combination to avoid injury from tip-over.



Portable Cart Warning

- Unplug this apparatus during lightning storms or when unused for long periods of time.

- Refer all servicing to qualified service personnel. Servicing is required when the apparatus has been damaged in any way, such as power-supply cord or plug is damaged, liquid has been spilled or objects have fallen into the apparatus, the apparatus has been exposed to rain or moisture, does not operate normally, or has been dropped.

• **ADDITIONAL SAFETY INFORMATION**

- Apparatus shall not be exposed to dripping or splashing and no objects filled with liquids, such as vases, shall be placed on the apparatus.
- Always leave sufficient space around the product for ventilation. Do not place product in or on a bed, rug, in a bookcase or cabinet that may prevent air flow through vent openings.
- Do not place lighted candles, cigarettes, cigars, etc. on the product.
- Connect power cord only to AC power source as marked on the product.
- Care should be taken so that objects do not fall into the product.
- Do not attempt to disassemble the cabinet. This product does not contain customer serviceable components.

• **IF YOUR PRODUCT OPERATES ON BATTERIES, adhere to the following precautions:**

- A. Any battery may leak electrolyte if mixed with a different battery type, if inserted incorrectly, or if all batteries are not replaced at the same time.
- B. Any battery may leak electrolyte or explode if disposed of in fire or an attempt is made to charge a battery not intended to be recharged.
- C. Discard leaky batteries immediately. Leaking batteries can cause skin burns or other personal injury. When discarding batteries, be sure to dispose of them in the proper manner, according to your state/provincial and local regulations.

End User License Agreement

IMPORTANT: READ CAREFULLY BEFORE DOWNLOADING OR INSTALLING THIS SOFTWARE!

EN

THIS END USER LICENSE AGREEMENT (THIS "EULA") IS A LEGAL AGREEMENT BETWEEN YOU AND THOMSON INC., OR ANY THOMSON GROUP ENTITY, AS DEFINED BELOW (COLLECTIVELY "THOMSON ENTITY"), FOR THE RCA OR THOMSON BRANDED PORTABLE DIGITAL AUDIO/VIDEO DEVICE APPLICATION/DRIVER SOFTWARE PROGRAM AND ASSOCIATED DOCUMENTATION, IF ANY (COLLECTIVELY, THE "PROGRAM"). THIS EULA CONTAINS IMPORTANT LEGAL LIMITATIONS, RESTRICTIONS AND DISCLAIMERS, AND ALSO SPECIFIES THE DURATION OF YOUR LICENSE. BY INSTALLING THE PROGRAM OR CLICKING ON THE ACCEPTANCE BUTTON OF THE PROGRAM, COPYING OR OTHERWISE USING THE PROGRAM, YOU ACKNOWLEDGE AND AGREE THAT YOU HAVE READ THIS EULA, UNDERSTAND IT, AND AGREE TO BE BOUND BY ITS TERMS AND CONDITIONS. YOU MAY USE THE PROGRAM ONLY IN ACCORDANCE WITH THIS EULA, AND ANY SUCH USE IS HEREBY UNDERSTOOD TO BE CONDITIONAL UPON YOUR SPECIFIC AGREEMENT TO THE UNMODIFIED TERMS SET FORTH HEREIN. IF YOU DO NOT AGREE WITH ALL OF THE TERMS OF THIS EULA, CLICK ON THE REJECTION BUTTON AND/OR DO NOT INSTALL THE PROGRAM AND/OR DO NOT USE THE PROGRAM.

1. LICENSE

- (a) Under this EULA, you are granted a license (i) to use the Program on a single workstation, and (ii) to make one (1) copy of the Program into any machine-readable form for backup of the Program, provided the copy contains all of the original Program's proprietary notices.
- (b) You may transfer the Program and license to another party only as a part of the Thomson/RCA branded Portable Digital Audio/Video Device ("AV Device"), and only if the other party agrees to accept the terms and conditions of this EULA. If you transfer the Program, you must at the same time either transfer all copies to the same party or destroy any copies not transferred.
- (c) The terms of this EULA will govern any software upgrades or updates provided by THOMSON Entity that replace and/or supplement the original Program, unless such upgrade or update is accompanied by separate license terms and conditions in which case the terms of that separate license will govern. You acknowledge and agree that THOMSON Entity may automatically download

upgrades or updates to the Program software to your computer in order to update, enhance, and/or further develop the Program.

2. LICENSE RESTRICTIONS

- (a) Except for the licenses expressly granted to you in this EULA, no other licenses or rights are granted or implied.
- (b) You may not (i) make the Program available over a network where it could be used by multiple computers at the same time; (ii) modify, translate, reverse engineer, decompile, disassemble (except to the extent that this restriction is expressly prohibited by law), or create derivative works based upon the Program; or (iii) copy the Program, except as expressly permitted herein. You agree that you shall only use the Program in a manner that complies with all applicable laws in the jurisdictions in which you use the Program, including, but not limited to, applicable restrictions concerning copyright and other intellectual property rights.
- (c) The Program may contain pre-release code that does not perform at the level of a final code release. In such case, the Program may not operate properly. Updated versions of the Program may be downloaded from www.rcaaudiovideo.com (if purchased in the United States) and www.thomsonlink.com (if purchased in Europe).
- (d) THOMSON Entity is not obligated to provide support services for the Program.
- (e) The Program is provided with "RESTRICTED RIGHTS". Use, duplication, or disclosure by the U.S. Government is subject to restrictions as set forth in subparagraph (c)(1)(ii) of DFARS 252.227-7013, or FAR 52.227-19, or in FAR 52.227-14 Alt. III, as applicable.

3. TERM AND TERMINATION

- (a) Your license is effective on the date you accept this EULA and remains in effect until this EULA is terminated by either party.
- (b) You may terminate this EULA and the associated license, without any notice or delay, by destroying or permanently erasing the Program and all copies thereof.
- (c) If you fail to comply with any of the terms of this EULA, in whole or part, your license will automatically terminate without notice from THOMSON Entity.
- (d) Upon termination of this EULA and your associated

End User License Agreement

license, you shall cease all use of the Program and destroy or permanently erase the Program and all full or partial copies thereof.

4. WARRANTY DISCLAIMER

THE PROGRAM IS PROVIDED "AS IS" WITHOUT WARRANTY OF ANY KIND, EITHER EXPRESSED OR IMPLIED, INCLUDING, BUT NOT LIMITED TO THE IMPLIED WARRANTIES OF MERCHANTABILITY, FITNESS FOR A PARTICULAR PURPOSE, TITLE OR NON-INFRINGEMENT. THE ENTIRE RISK AS TO THE QUALITY AND PERFORMANCE OF THE PROGRAM IS WITH YOU. SHOULD THE PROGRAM PROVE DEFECTIVE, YOU (AND NOT THOMSON ENTITY, ITS SUPPLIERS, OR ITS DEALERS) ASSUME THE ENTIRE COST FOR ALL NECESSARY REPAIR OR CORRECTION.

This exclusion of warranty may not be allowed under some applicable laws. As a result, the above exclusion may not apply to you, and you may have other rights depending on the law that applies to you.

5. OWNERSHIP RIGHTS

All title and intellectual property rights in and to the Program and any copies thereof are owned by THOMSON Entity or its suppliers. All title and intellectual property rights in and to the content which may be accessed through use of the Program is the property of the respective content owner and may be protected by applicable copyright or other intellectual property laws and treaties. This license grants you no rights to use such content.

6. LIMITATION OF LIABILITY

(a) TO THE MAXIMUM EXTENT PERMITTED BY APPLICABLE LAW, IN NO EVENT SHALL THOMSON ENTITY, OR ITS DEALERS BE LIABLE FOR ANY SPECIAL, INCIDENTAL, INDIRECT, OR CONSEQUENTIAL DAMAGES WHATSOEVER (INCLUDING, WITHOUT LIMITATION, DAMAGES FOR LOSS OF PROFITS, BUSINESS INTERRUPTION, CORRUPTION OF FILES, LOSS OF BUSINESS INFORMATION, OR ANY OTHER PECUNIARY LOSS) REGARDLESS OF CAUSE OR FORM OF ACTION, INCLUDING CONTRACT, TORT, OR NEGLIGENCE, ARISING OUT OF YOUR USE OF OR INABILITY TO USE THE PROGRAM, EVEN IF THOMSON ENTITY HAS BEEN ADVISED OF THE POSSIBILITY OF SUCH DAMAGES. BECAUSE SOME STATES AND JURISDICTIONS DO NOT ALLOW THE EXCLUSION OR LIMITATION OF LIABILITY OF

CONSEQUENTIAL OR INCIDENTAL DAMAGES, THE ABOVE LIMITATION MAY NOT APPLY TO YOU.

(b) YOU ASSUME RESPONSIBILITY FOR THE SELECTION OF THE APPROPRIATE PROGRAM TO ACHIEVE YOUR INTENDED RESULTS, AND FOR THE INSTALLATION, USE, AND RESULTS OBTAINED.

7. WINDOWS MEDIA™

The software embedded within your A/V Device (the "Device Firmware") contains software licensed from Microsoft that enables you to play Windows Media Audio (WMA) files ("WMA Software"). The WMA Software is licensed to you for use with your A/V Device under the following conditions. By installing and using this version of the Device Firmware, you are agreeing to these conditions. IF YOU DO NOT AGREE TO THE END USER CONDITIONS OF THIS SECTION 7, DO NOT INSTALL OR USE THIS VERSION OF THE DEVICE FIRMWARE.

The WMA Software is protected by copyright and other intellectual property laws. This protection also extends to documentation for the WMA Software, whether in written or electronic form.

GRANT OF LICENSE. The WMA Software is only licensed to you as follows:

You may use this version of the Device Firmware containing the WMA Software only as such use relates to your A/V Device.

You may not reverse engineer, decompile, or disassemble the WMA Software, except and only to the extent that such activity is expressly permitted by applicable law. You may transfer your right to use the Device Firmware only as part of a sale or transfer of your A/V Device, on the condition that the recipient agrees to the conditions set forth herein. If the version of the Device Firmware that you are transferring is an upgrade, you must also transfer all prior versions of the Device Firmware that you have which include the WMA Software.

MICROSOFT IS NOT PROVIDING ANY WARRANTY OF ANY KIND TO YOU FOR THE WMA SOFTWARE, AND MICROSOFT MAKES NO REPRESENTATION CONCERNING THE OPERABILITY OF THE WMA SOFTWARE.

The WMA Software is of U.S. origin. Any export of this version of the Device Firmware must comply with all applicable international and national laws, including the U.S. Export Administration Regulations, that apply to the WMA Software incorporated in the Device Firmware. Content providers are using the digital rights

End User License Agreement

EN

management technology for Windows Media contained in your A/V Device ("WM-DRM") to protect the integrity of their content ("Secure Content") so that their intellectual property, including copyrights, in such content is not misappropriated. Your A/V Device uses WM-DRM software to play Secure Content ("WM-DRM Software"). If the security of the WM-DRM Software in your A/V Device has been compromised, owners of Secure Content ("Secure Content Owners") may request that Microsoft revoke the WM-DRM Software's right to acquire new licenses to copy, display, and/or play Secure Content. Revocation does not alter the WM-DRM Software's ability to play unprotected content. A list of revoked WM-DRM Software is sent to your A/V Device whenever you download a license for Secure Content from the Internet or from a computer. Microsoft may, in conjunction with such license, also download revocation lists onto your A/V Device on behalf of Secure Content Owners.

8. THIRD PARTY SOFTWARE

ANY THIRD PARTY SOFTWARE THAT MAY BE PROVIDED WITH THE PROGRAM IS INCLUDED FOR USE AT YOUR OPTION. IF YOU CHOOSE TO USE SUCH THIRD PARTY SOFTWARE, THEN SUCH USE SHALL BE GOVERNED BY SUCH THIRD PARTY'S LICENSE AGREEMENT, AN ELECTRONIC COPY OF WHICH WILL BE INSTALLED IN THE APPROPRIATE FOLDER ON YOUR COMPUTER UPON INSTALLATION OF THE SOFTWARE. THOMSON ENTITY IS NOT RESPONSIBLE FOR ANY THIRD PARTY'S SOFTWARE AND SHALL HAVE NO LIABILITY FOR YOUR USE OF THIRD PARTY SOFTWARE.

9. GOVERNING LAW

If you acquired this A/V Device in the United States, this EULA shall be governed and construed in accordance with the laws of the State of Indiana, U.S.A. without regard to its conflict of laws principles. If you acquired this A/V Device within the European Union, this EULA shall be governed and construed in accordance with the laws of France, without regard to its conflict of laws principles. If you acquired this A/V Device outside the United States or the European Union, then local law may apply.

10. GENERAL TERMS

This EULA can only be modified by a written agreement signed by you and THOMSON Entity, and changes from the terms and conditions of this EULA made in any other manner will be of no effect. If any portion of this EULA

shall be held invalid, illegal, or unenforceable, the validity, legality, and enforceability of the remainder of the Agreement shall not in any way be affected or impaired thereby. This EULA is the complete and exclusive statement of the agreement between you and THOMSON Entity, which supersedes all proposals or prior agreements, oral or written, and all other communications between you and THOMSON Entity, relating to the subject matter of this hereof.

"THOMSON Group Entity" when used in this EULA shall mean any person, corporation, or other organization, domestic or foreign, including but not limited to subsidiaries, that is directly or indirectly controlled by Thomson, French company. For purposes of this definition only, the term "control" means the possession of the power to direct or cause the direction of the management and policies of an entity, whether by ownership of voting stock or partnership interest, by contract, or otherwise, including direct or indirect ownership of more than fifty percent (50%) of the voting interest in the entity in question.

Before You Begin

Dear RCA Customer,

Thank you for purchasing the Player. This product will play open mp3 and Windows Media audio (WMA) content as well as content purchased from most online music download services.

After purchasing and downloading music to your PC, you are now ready to move content to your player. To transfer the music, you must use Windows Media Player or the application recommended by the online music download service.

(Note: Services and applications must be Windows Media audio-compliant and support Digital Rights Management.)

Unpacking Your Player

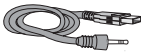
Your player came with everything you need to make music portable — all of the items shown below should have been packed in the box with your player.



RCA Player



Music Management CD contains software applications



USB cable: Plug the Line-in end into the earphone jack on your player, and plug the USB end into your computer's USB port.



Earphones



Line-in cable

Computer System Requirements

- Pentium III 500MHz or higher recommended
- Windows 2000 (Service Pack 3) or Windows XP (Service Pack 1 or higher)
- Internet Explorer 6.0 or higher with Internet access
- 250MB or more free hard disk space for the software
- 128MB RAM (256MB recommended)
- CD drive capable of digital audio extraction
- USB port (2.0 recommended)
- Installed sound card
- Installed 16-bit color video card

Secure Music Download Requirements

- Windows XP (Service Pack 1 or higher)
- Internet Explorer 6.0 or higher with Internet access
- Windows Media Player 10 or higher
- Yahoo! Music Jukebox (Included in the CD)

Warning

Use of this player is for your personal use only. Unauthorized recording or duplication of copyrighted material may infringe upon the rights of third parties and may be contrary to copyright laws.

Caution

- Keep player out of direct sunlight. Exposure to direct sunlight or extreme heat (such as inside a parked car) may cause damage or malfunction.
- Do not expose to rain or moisture.

Before You Begin

Headset safety



Have a Blast- Just Not in Your Eardrums

Make sure you turn down the volume on the unit before you put on headphones. Increase the volume to the desired level only after headphones are in place.

- Do not play your headset at a high volume. Hearing experts warn against extended high-volume play.
- If you experience a ringing in your ears, reduce volume or discontinue use.
- You should use extreme caution or temporarily discontinue use in potentially hazardous situations.

Even if your headset is an open-air type designed to let you hear outside sounds, don't turn up the volume so high that you are unable to hear what is around you.

Caution While Driving

Use of headphones while operating an automobile or moving vehicle is not recommended and is unlawful in some states and areas. Be careful and attentive on the road. Stop operation of the player if you find it disruptive or distracting while driving.

Back up your data

As with any portable player, you must back up the drive regularly. RCA and Thomson are not responsible for lost data.

Software Setup

The Music Management CD that comes with your player contains all of the necessary software components you need to make your player work properly.

These components do the following:

- enable you to transfer files from your computer to your player
- convert video files
- format and sort the contents, update the system files.

Inserting the Included CD into CD Drive

1. Turn on your computer and place the Music Management CD that came with your player into your computer.

IMPORTANT: Don't connect the USB cable to the PC or the player before or during the CD installation.

2. If the setup screen does not appear, double-click My Computer, double click your CD drive icon, and double click Install to run the installer.



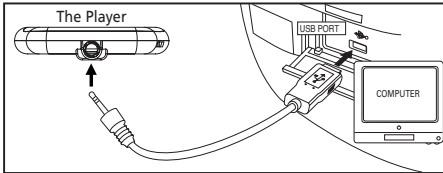
Note:

- The Music Management CD also contains Yahoo! Music Jukebox that can help transfer music content to your player. Please refer to the section on your installed software for detailed operations.
- Refer to "Transferring Files to the Player" on page 11 for details.

Connecting to the Computer

Connecting the Player to the Computer

Connect the player to your computer with the USB cable provided. The player will turn on automatically. In Windows XP and when Windows Media Player 10 or above is installed, the player will appear as a Windows portable device using the Media Transfer Protocol (MTP). If Windows Media Player 10 or above is not installed or if your computer is running Windows 2000, the player will be connected in Mass Storage Class (MSC) mode. It will appear as a drive letter on your computer and behave as a detachable drive for file transfer in one or both directions.



Warning:

- The USB cable provided is dedicated for this player only. DO NOT connect this player to the computer with any other USB cable. DO NOT plug this USB cable in other USB devices.
- The USB cable provided may damage other products if plugged into the earphones jack.

Note:

- It might take several seconds for the player to be detected. Click Refresh in My Computer or Windows Explorer to make sure the player has been detected.
- The player is capable of transferring files at USB 2.0. If USB 2.0 port is available on your computer, use it to connect to your player. The player is still backward compatible with the older USB 1.1 ports. However, you will not be able to take full advantage of the potential speed increase.

Charging the Battery

Your player is charging through the USB connection when it is connected to your computer. To fully charge the player, make sure your computer is on and the player is connected for at least 3 hours.

Important Battery Information

Caution: Risk of explosion if battery is incorrectly replaced. Replace only with the same or equivalent type.

- Charge the player for at least 3 hours before first use.
- Charge the player for at least 3 hours after putting away the player for a long time.
- Battery replacement should only be made by trained technicians. Refer to Limited Warranty for details.
- Do not attempt to open the player. No user serviceable parts inside.
- To reduce risk of injury, charge only rechargeable batteries recommended by the manufacturer for this player. Other types of batteries may burst causing damage and personal injury.

Caution

- The battery used in this player may present a risk of fire, explosion, or chemical burn if mistreated. Do not separately recharge, disassemble, or expose to high temperatures. Examples of high temperatures that may damage your product include leaving it in a locked car in the summer, or putting it on top of other heat generating electronic devices (such as power amplifiers and computer monitors).
- Do not place the battery under direct sunlight or in excessively hot places over 45°C (113°F) such as the dashboard of a car.
- Dispose of used battery properly. Keep away from children. Do not disassemble and do not dispose of in fire.



Transferring Files to the Player

Transferring Files to the Player

You may select one of the following methods to transfer music content to your player: 1) Yahoo! Music Jukebox, 2) drag-and-drop via Windows Explorer. For method 1, you first need to have successfully installed the software packages included in the Music Management CD (refer to "Inserting the included CD into CD drive).

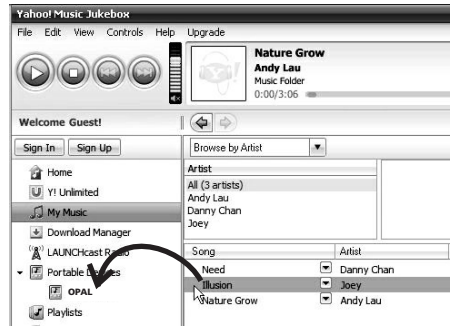
Note:

- Yahoo! Music Jukebox is supported in Windows XP or higher.

Caution: Secure music download files must be transferred to your player through the Yahoo! Music Jukebox or the application recommended by your online music download service. (Note: Services and applications must be Windows Media audio-compliant and support Digital Rights Management.) (Apple iTunes™ music content is not supported).

Transferring files via Yahoo! Music Jukebox (Windows XP or higher only)

Yahoo! Music Jukebox lets you manage your music easily and organize like a pro. Create your own playlists: music for work, the gym, or even dinner. You can also buy download music and transfer to your player in seconds. Just drag-and-drop and you're done. For more information on the installation and operations, please visit: <http://music.yahoo.com>



1. Launch the *Yahoo! Music Jukebox*.
2. Attach the player to your computer. The player's name should appear after a few seconds in the left navigation pane.
3. In the Yahoo! Music Jukebox, click *My Music* or click on a playlist on the left navigation pane.
4. Simply drag the playlist you want to the name of your player in the left navigation pane (you can also drag tracks, artists and albums directly from *My Music*).
5. The Yahoo! Music Jukebox will check to see if there is sufficient storage space on the player to copy the audio files. If not, you will have to reduce the number of audio files you are transferring.

Note:

- Do not disconnect the USB cable during music download. Doing so may corrupt system files or the files being downloaded.
- Yahoo! Music Jukebox is supported in Windows XP or higher. Windows XP requires Service Pack 1 or higher. Yahoo! Music Jukebox requires Internet Explorer 6 or above for installation.
- Required updates to Yahoo! Music Jukebox may be available from Yahoo! after installation. Please refer to the Yahoo! Music Jukebox Help for more information about these updates.

Transferring Files to the Player

Transferring files via Windows Explorer (Drag-and-Drop)

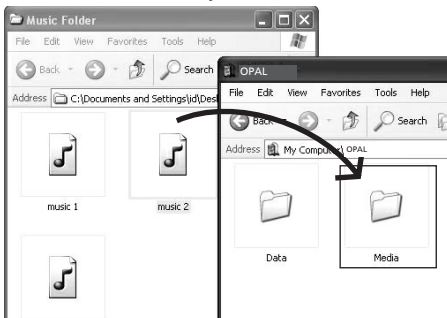
In Windows XP (with Windows Media Player 10 or above installed)

In Windows XP and when Windows Media Player 10 is installed, the player is connected to the computer in MTP mode. In the Windows Explorer, when the player is opened, the "Data" and "Media" views will be displayed for the player.

The Data folder is used to manage data content on the player, such as text files. The Media folder is used to manage media content supported by the player for playback, such as mp3 and wma.

You can copy files to the player through Windows Explorer (drag-and-drop). Picture files should be copied to the "Media" folder for viewing while video files can not be dragged and copied to the "Media" folder directly as only .SMV files are supported. The video files must be converted and transferred via RCA Video Converter for playback (refer to page 19). Alternatively, you can transfer the converted video files to the "Data" folder via the Windows Explorer (drag-and-drop).

You can copy files to / delete files from the player through Windows Explorer (drag-and-drop), but you cannot open or edit the files directly from the player. If you want to edit the files, you will need to copy the files from the player to another location (drive) in the system.



In Windows 2000 or Windows XP (without Windows Media Player 10 or above installed)

If Windows Media Player 10 or above is not installed in Windows XP, or your computer is running Windows 2000, the player is connected to the computer in MSC mode. You can transfer files via the Windows Explorer (drag-and-drop).

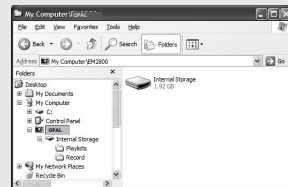
From Windows Explorer, highlight all the files/folders you want to transfer to your player and drag them to the drive letter that is associated with it.

Picture files should be copied to the root directory for viewing while video files can not be dragged and copied to the player directly as only .SMV files are supported. The video files must be converted and transferred to the player via RCA Video Converter for playback (refer to page 19). Alternatively, you can transfer the converted video files to the root directory.



Note:

- Windows XP requires Service Pack 1 or higher.
- If your computer has installed Windows Media Player 11, "Internal Storage" shows instead of the folders mentioned above. Copy files inside "Internal Storage".




Caution: Secure music download files must be transferred to your player through one of the provided Jukebox software packages or any applications recommended by the online music download service. Please visit the online music download service's website where you purchased your content from for more details on transferring secure music to your player.

Transferring Files to the Player

Disconnecting your player from the Computer

EN

For Windows XP users with Windows Media Player 10 or above installed, your player is connected in MTP mode to your computer by default, you may disconnect the USB cable directly when file download is completed.

For Windows XP users without Windows Media Player 10 or above installed, your player is connected in MSC mode. Your player will appear as a drive letter on your computer. You may disconnect it by clicking the  icon from the System Tray and select "Unplug or Eject hardware". Select the drive corresponding to your player.



Note: Do not disconnect the USB connection during file download. Doing so may corrupt system files or the files being downloaded.



The "Stop a Hardware player" screen will appear. Select the player to be stopped again for confirmation and click OK and disconnect your player from the computer.



General Controls

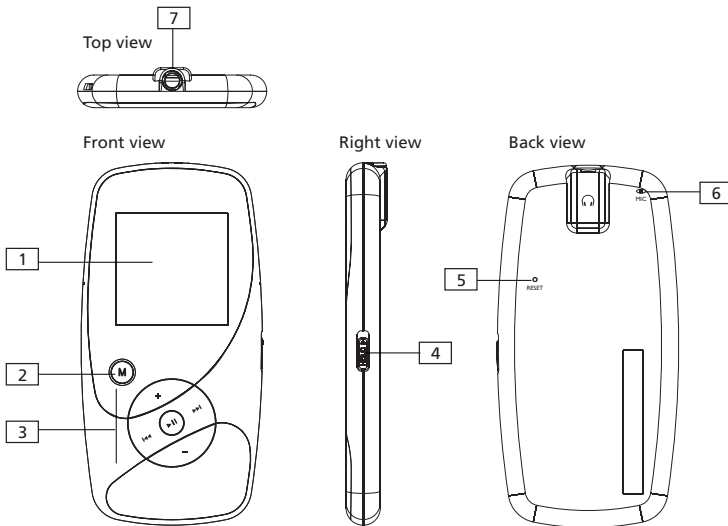
Before You Begin

The following examples illustrate what you should do before operating your player.

1. These instructions presume you've already done the followings:
 - Installed all necessary applications.
 - Transferred music from your computer to the player.
 - Allowed your player to charge for at least 3 hours while connected to the computer.
2. If you haven't unplugged the player from your computer, detach the USB cable from the player.
3. Connect the headphones to your player.
4. Ensure the key lock is not activated by sliding **HOLD ▷** downward.
5. If your player isn't already on, turn it on by pressing and holding **▶||** until the player switches on. The main navigation menu appears.

Overview

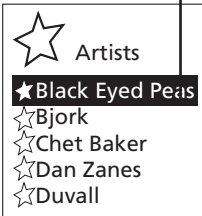
1. The display
2. **M** - Press once during playback to access the player's menu. Press twice to access the Home menu. Press three times to go back to the playback screen.
3. **▶||** - Press and hold until the player switches on/off. Press once to pause playback. Press again to resume.
 - +** - Scrolls up.
 - - Scrolls down.
 - ◀◀** - Skips backwards, goes back
 - ▶▶** - Skips forwards, advances, make selection
4. **HOLD ▷** - Slide the key upwards to prevent accidental key activation. Slide downwards to unlock.
5. Reset button
6. Microphone
7. Earphones jack/USB jack/Line-in recording jack - Insert the earphones, the USB cable here for connecting to the computer or the line-in cable for line-in recording.



General Controls

Navigation Display

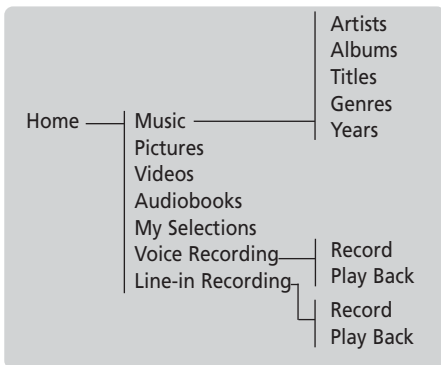
Indicates the item currently selected



1. Indicates whether the player is playing or paused.
2. Indicates that if shuffle mode is on/off.
3. Indicates that if repeat mode is on/off.
4. Indicates that the key lock function is activated.
5. Indicates the battery level of the player.

Navigation Menus

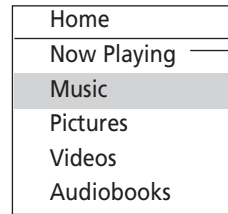
The files are sorted according to their file types. Music files are further sorted according to several parameters for quick search of your favorite music. Once your player is turned on, you will see the file menus as listed below:



Selecting What You Want to Play

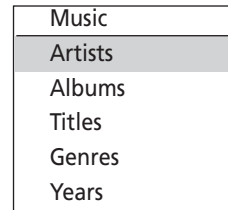
The following example illustrates the steps to select and play audio files in the Artists category.

1. Press **M** twice during playback to enter Home menu. Highlight "Music" by pressing **+** or **-**. Then press **▶▶** to advance.

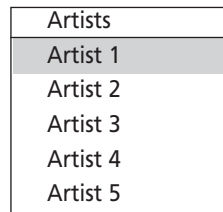


Available only during playback.

2. Highlight "Artists" by pressing **+** or **-**. Then press **▶▶** to advance.



3. The Artists menu appears with the artists listed in alphabetical order.
 - Scroll up and down the "Artists" menu by pressing **+** or **-**.
 - Return to the previous menu by pressing **◀◀**.
 - View the albums from the artist highlighted by pressing **▶▶** (the albums of that artist appear in alphabetical order).



General Controls

- 4. Scroll up and down the "Albums" menu by pressing **+** or **-**.
- View the songs from the album highlighted by pressing **▶▶** (the songs of that album appear in track order).

Albums	Album1
Album 1	Song 1
Album 2	Song 2
Album 3	Song 3
Album 4	Song 4
Album 5	Song 5

- 5. Highlight the desired song by pressing **+** or **-**.
- To play the song, press **▶▶** or **▶||**. The song's information will show on the display during playback.
- To pause playback, press **▶||**.

EN

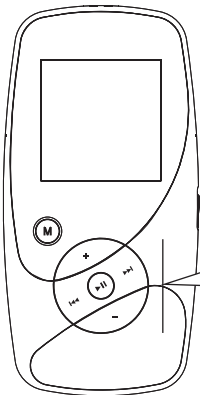


Note:

- The information provided in the playback screen depends upon the ID3 tags that have been set up for the audio file.
- To show the Player's menu during playback, press **M**.
- The item that you can select for playback is not limited to a single file, you may select an artist, an album and then press **▶||** to start playback of all files within your selected item.

Listening, Viewing and Recording

Music Playback

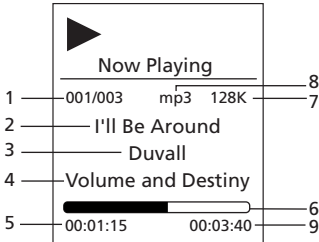


- ◀◀** Skips to the previous file*, press and hold to scan backwards within a file.
- ▶▶** Skips to the next file, press and hold to scan forward within a file.
- ▶||** Starts/ pauses playback.
- +** or **-** Increases or decreases the volume

* Press **◀◀** within the beginning 4 seconds of the current music file to skip to previous file. Otherwise, you will return to the beginning of the current file.

Listening, Viewing and Recording

Music Playback Display



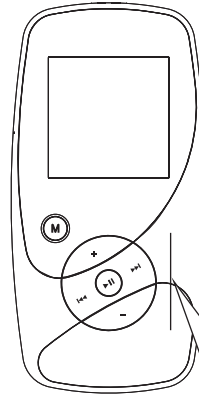
1. Current file number/total number of files
2. Song name
3. Artist name
4. Album name
5. Elapsed playback time
6. Playback progress bar
7. File bitrate
8. File type
9. File total time



Note:

The information provided in the playback screen depends upon the ID3 tag information that was recorded when created by the Music Management Software or Data base the song came from.

Audiobooks Playback



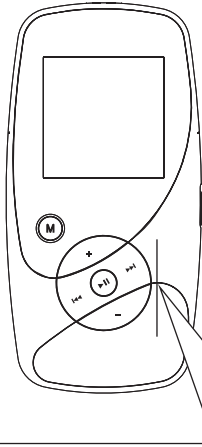
- ⏮** Skips to the previous file when skip-by-file is selected*, skips to the previous section when skip-by-section is selected**, press and hold to scan backwards within a file.
- ⏭** Skips to the next file when skip-by-file is selected*, skips to the next section when skip-by-section is selected**, press and hold to scan forward within a file.
- ⏸** Starts/ pauses playback.
- +** or **-** Increases or decreases the volume

* Refer to page 24 for details of skipping by file or by section.

** When skip-by-section is selected, press **⏮** within the beginning 4 seconds of the current audible file to skip to previous audible section. Otherwise, will return to the the beginning of the current section.

Listening, Viewing and Recording

Picture Viewing



- + Scrolls up during file navigation.
- Scrolls down during file navigation.
- ⏪ Goes back, skips backward.
- ⏩ Advances, skips forward.
- ▶|| Starts/ pauses slideshow if slideshow is activated*.

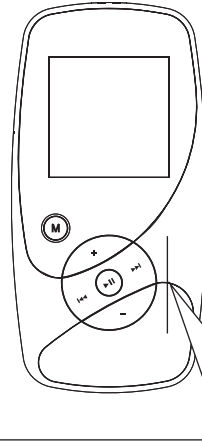
Press **M** twice during playback to return to file navigation.

* Refer to page 24 to activate slideshow in the Player's menu.



Note: In Windows XP, picture files should be copied to the "Media" folder of the player for viewing while in Windows 2000, picture files should be copied to the root directory for viewing.

Video Viewing



- + Scrolls up during file navigation.
- Scrolls down during file navigation.
- ⏪ Goes back, skips backward*. Press and hold to scan backwards within a file.
- ⏩ Advances, skips forward. Press and hold to scan forward within a file.
- ▶|| Starts/ pauses playback.
- + or - Increases or decreases the volume.

Press **M** twice during playback to return to file navigation.

* Press within the beginning 4 seconds of the current file to skip to previous file. Otherwise, will return to the beginning of the current file.

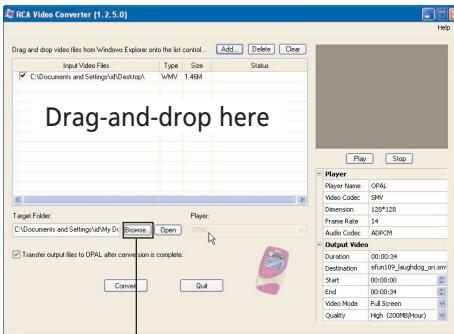
Listening, Viewing and Recording

EN

Video Converter

Your video has to be converted to optimum format before transferring to this player for playback. To do so, you need to install the RCA Video Converter in your computer. You can install the Converter from the music management CD or go to <http://www.rcaaudiovideo.com/software> to download the most updated converter for installation.

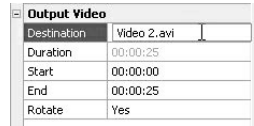
1. Load the music management CD included with this player in your computer. Installation will start automatically. Follow the instructions on the screen to install the converter.
2. Launch the video converter after installation has succeeded and connect the player to the computer.
3. Drag-and-drop video files from the Windows Explorer to the list control panel.



Select the target folder

4. Select the target folder and enter the name for output file by clicking "Browse".
 - If you want to transfer the video output file to the player automatically after conversion is complete, check the box underneath to do so.
5. Select the type of player from the pull-down menu under "Player". Select "OPAL" for this player. Optimum settings for file conversion will be selected automatically.

6. To edit the name of the output video, click on the text of the output video, click on the box next to destination at the lower right corner.



- If you prefer to convert only a portion of the video file, select the start and end time for the conversion at the lower right corner.
 - To resize the output video, click "Video Mode". Select "Full Screen" to fully utilize the screen of the player, yet part of the video may be cropped during video playback. Select "Full Image" to keep the ratio of the video size same as the input video, yet the screen of the player may not be fully utilized.
 - Select the quality level of the output video among High, Medium or Low from the pull down menu.
7. Click "Convert" to start the file conversion.



Listening, Viewing and Recording

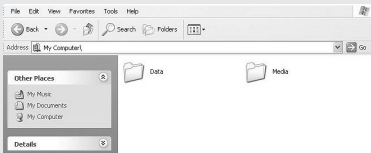


Tip:

For operation details of the video converter, please open the help file by pressing the 'F1' key on your computer.

Note:

- Picture files should be copied to the "Media" folder for viewing in Windows XP if Windows Media Player 10 or above is installed. If Windows Media 10 or above is not installed or your computer is running Windows 2000, picture files should be copied to the root directory for viewing.
- Video files cannot be dragged and dropped to the "Media" folder directly. They must be converted and transferred to the player via the RCA Video Converter for playback. Alternatively, converted video files can also be transferred to the "Data" folder via the Windows Explorer (drag-and-drop) in Windows XP with Windows Media Player 10 or above installed or to the root directory if Windows Media Player 10 or above is not installed or your computer is running Windows 2000.

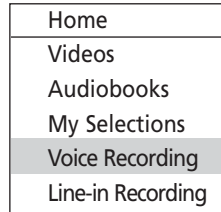


This video converter software relies on the video codecs already installed in your computer. Make sure the video file you wish to convert plays on your computer before using the video converter software. Note that some video files that play on your computer may rely on specialized video playback applications that are not compatible with the video converter software.

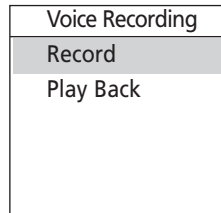
- If your computer has installed Windows Media Player 11, "Internal Storage" shows instead of the folders mentioned above. Copy files inside "Internal Storage".

Voice Recording

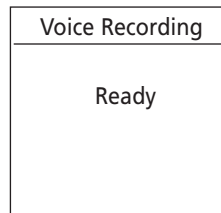
1. To start voice recording, press **M** twice during playback to access the Home menu.
2. Press **+** or **-** to highlight "Voice Recording". Then press **▶▶** to advance.



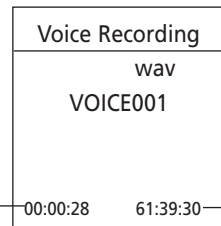
3. Press **+** or **-** to highlight "Record". Then press **▶▶** to access voice recording mode.



4. Press **▶▶** when the display shows "Ready" to start voice recording.



5. Press **▶▶** to pause record. Press **▶▶** again to resume recording.



6. Press **M** to stop recording.

Listening, Viewing and Recording

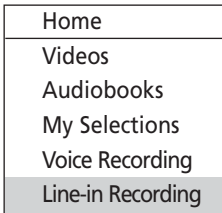
EN

Playback Recorded Voice Recording

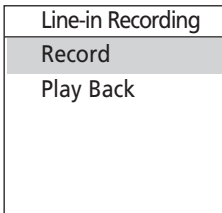
1. Follow steps 1-2 above to enter the Voice Recording sub-menu.
2. Press **+** or **-** to highlight "Play Back" and press **▶▶** to confirm your selection.
3. Press **+** or **-** to highlight the recorded file and **▶▶** to start playback.

Line-in Recording

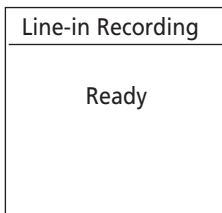
1. To start line-in recording, press **M** twice during playback to access the Home menu.
2. Press **+** or **-** to highlight "Line-in Recording". Then press **▶▶** to advance.



3. Press **+** or **-** to highlight "Record". Then press **▶▶** to access the line-in recording mode.



4. Press **▶▶** when the display shows "Ready" to start line-in recording.



5. Press **▶▶** to pause record. Press **▶▶** again to resume recording.



6. Press **M** to stop recording.



Tips: Adjust the volume level of the source audio device in order to achieve the optimum recording quality. The source output varies from model to model. You might want to experiment with a few recordings to determine the proper volume output of the source to get optimum recording quality from the player. Recommend starting the source at around the room volume level.

Playback Recorded Line-in Recording

1. Follow steps 1-2 above to enter the Line-in Recording sub-menu.
2. Press **+** or **-** to highlight "Play Back" and press **▶▶** to confirm your selection.
3. Press **+** or **-** to highlight the recorded file and **▶▶** to start playback.

Deleting Recorded Files

1. While an unwanted recorded voice or line-in recording is highlighted, press **▶▶** to start the playback.
 - Refer to Playback Recorded Voice Recording and Playback Recorded Line-in Recording for details in highlighting a recorded file.
2. Press **M** and then **+** or **-** to highlight "Delete File" and press **▶▶** to confirm the deletion.

My Selections

Adding Files to My Selections

You can add your favorite songs to My Selections.

1. Press **M** during playback to access the Player's menu.
2. Press **+** or **-** to highlight "Add to MySel" and press **▶||** to confirm your selection. The music (mp3/wma/wav) file that is currently playing is added to My Selections. Repeat the above steps for selecting more items.

Playing My Selections

1. Press **M** twice during playback to access the Home menu, highlight "My Selections" by pressing **+** or **-**. Then press **▶||** to enter the My Selections.

Home
Videos
Audiobooks
My Selections
Voice Recording
Line-in Recording

2. With "My Selections" already highlighted, press **▶||** to start playback of selected items.

Clearing My Selections

1. Press **M** during playback to access the Player's menu. Highlight "Clear MySel" by pressing **+** or **-**. Then press **▶||** to confirm deletion of the selected items.

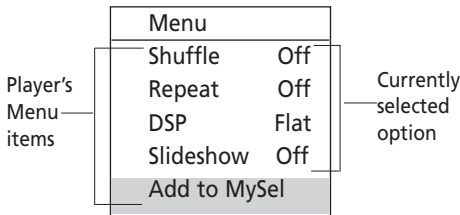
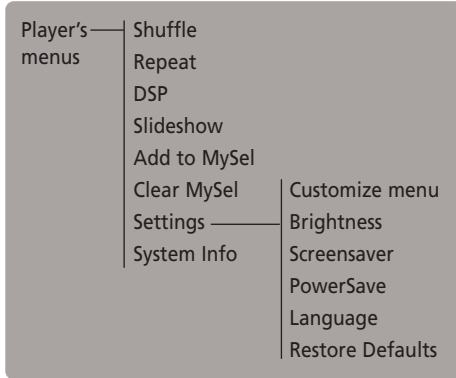
Menu	
Repeat	Off
DSP	Flat
Slideshow	Off
Add to MySel	
Clear MySel	

Player's Menus

Accessing the Player's Menus


Press **M** during playback to access the Player's menu.

Navigation and Selection



1. To scroll up or down to highlight items on the screen, press **+** or **-**.
2. To confirm your selection or enter and view the submenu, press **▶▶**.
3. To go back to the previous menu level, press **◀◀**.
4. Press **▶▶** repeatedly to select options.


Shuffle


Press **▶▶** repeatedly to select shuffle  on or off. Files will be played randomly when shuffle is activated.

This item is only available when you are listening to a music (mp3/wma/wav) file.

Repeat

Press **▶▶** repeatedly to select a repeat mode. This item is only available when you are listening to a music (mp3/wma/wav) file.

Repeat One  - Repeat the current item.

Repeat All  - Repeat all items.

Repeat Off - Repeat is Off.



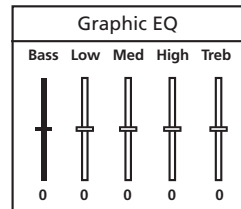
Note: Repeat and shuffle will work differently if you have highlighted a song or a set (albums, genres, etc.). You can select your desired combination of Shuffle and Repeat to suit you.

DSP (Digital Signal Processor)

Press **▶▶** repeatedly to select a DSP mode.

Options available: Flat, Bass, Graphic, Pop, Rock and Jazz.

Press **▶▶** repeatedly until Graphic appears and then press **▶▶** to enter Graphic mode. In graphic mode, you can customize the five band equalizer. Press **◀◀** or **▶▶** to select a band and then press **+** or **-** to adjust the band level. Press **M** to exit Graphic mode.



Player's Menus

Slideshow

The item defines the viewing time for each picture during a slideshow. Press ►|| repeatedly to select among: off, 3, 5, 10 and 15 seconds.

Skipping

Press ►|| repeatedly to select skip by file or section.

This item is only available when you are listening to a multiple-sectioned Audible file.

Add to MySel

Refer to page 22 for details.

Clear MySel

Refer to page 22 for details.

Settings

Press ►► to enter the Settings menu and then press + or - to highlight an item. Press ►|| repeatedly to change settings.

Customize Menu: to select what you wish to display in the submenu of Music library, Artists, Titles, Genres, and Years.

Brightness(1-8): to adjust the display light brightness.

Screensaver(10s, 20s, 30s and 1m): to adjust the duration before the screensaver activates.

Power Save(Off, 1m, 2m, 5m and 10m): to adjust the duration for automatic shut down when the player is idle.

Language: to select the menu's language.

Restore Defaults: to reset all menus to factory defaults.

System Info

Press ►► to show the amount of free space available and the firmware version.

Tips and Troubleshooting

EN

- Problem: Player repeats same tracks or all tracks.
 - Repeat play is turned on. Press the MENU button (**M**) to change the play mode.
- Problem: Audio distorted at high volume.
 - Change the DSP mode to Flat.
 - Turn down the volume.
- Problem: The audio tracks on my player keep skipping or popping.
 - You'll need to re-record the audio track – make sure you close all other applications on your PC when you record.
 - Try recording with Error Correction setting turned on.
- Problem: Player turns itself off.
 - Your player turns itself off if you leave it in pause mode or navigation mode for the duration specified in PowerSave setting.
- Problem: The player cannot be turned on.
 - Battery is empty.
 - Ensure the keys lock is not activated.
 - Reset the player by pressing the RESET button on the back of the player with a non-metal pointed object (e.g. toothpick).
 - If the player still cannot be turned on after resetting, perform a firmware upgrade to restore it.
 - Please go to <http://www.rcaaudiovideo.com> for more details.
- Problem: Player does not respond to key presses.
 - If your player stops responding to key presses, you can reset it by pressing the RESET button on the back of the player with a non-metal pointed object (e.g. toothpick). Most of your settings will be preserved; only the settings that you have changed after your last power off will be lost.
 - This player may temporarily cease to function if subjected to electrostatic disturbance. To resume normal operation, it may be necessary to cycle the power off and back on or you can reset it by pressing the RESET button on the back of the player with a non-metal pointed object (e.g. toothpick).
- Problem: Player cannot play WMA songs.
 - Secure music download files must be transferred to your player through the Yahoo! Music Jukebox or the application recommended by your online music download service (Note: Services and applications must be Windows Media audio-compliant and support Digital Rights Management.) (Apple iTunes music content is not supported).
- Problem: The player takes a long time to read files in a folder.
 - File reading may take longer if too many files are put in a single folder. Re-organize your files into a number of folders.
- Problem: Why song information is not showing correctly?
 - Song information may not match your current player's language setting. Change the language setting.
- Why the player cannot view the picture files?
 - The player only supports .jpg extension file, and do not support other formats like .bmp, .tiff, .jpeg.
 - All picture files need to be put in the "Media" folder (if Windows Media Player 10 is installed) or "Internal Storage" folder (if Windows Media Player 11 is installed) of the player when in Windows XP and connected in MTP mode or put in the root directory of the player when in Windows 2000 and connected in MSC mode.
- Why the player cannot play the video files from the computer?
 - All video contents must be converted by the video converter which comes with the player (please refer to the CD). Other format of video file will not be supported.
 - The converted video contents must be put in the "Media" folder (if Windows Media Player 10 is installed) or "Internal Storage" folder (if Windows Media Player 11 is installed) or put in the root directory of the player when in Windows 2000.
- Why does my player report that it is full?
 - You have filled the capacity of the internal memory of the player.

Additional Information

- You have exceeded the maximum number of items that this player supports. Your player can only support up to 999 media files within eight hierarchy of folder in maximum.
- Problem: Cannot playback tracks on the player.
- Make sure audio tracks are encoded in the mp3 or Windows Media formats at supported bitrates.
Bitrates support by the player:
mp3 – 32 to 320 kbps
wma – 48 to 192 kbps
- WMA files may be DRM protected and you don't have the proper rights (license) to play the files.
- Check the website and/or application help system of the music download service provider from where the content was purchased from for license acquisition details. For more information on how license acquisition works, go to www.microsoft.com/windowsmedia/drm.
- Problem: Why can't my portable player playback songs downloaded from my paid Music Server Provider subscription service?
- The internal clock in your portable player may not be up to date. Downloading a new subscription song from your Music Server Provider should update your player's clock and allow it to playback all your songs again.
- The license for your subscription songs may have expired. Synchronize your device with your PC again to obtain an update to your license. If the problem persists, please contact your Music Service Provider for additional support.
- What is MTP mode?
- MTP (Media Transfer Protocol) mode is essential if you want to transfer DRM content to your player. In MTP mode your player will no longer show up as a drive letter. So programs that were designed to work with a player that shows up as a drive letter will not be able to work directly with the player.

Check for Updates

Visit <http://www.rcaaudiovideo.com> for the latest news and firmware upgrades for our digital media player.

Specifications

Hardware

- Dimensions: 92.2 mm H, 46.1mm W, 8.7mm D
- Unit Weight: 40g
- Stereo Headphones/USB Connection Jack
- Battery Operated: Rechargeable lithium battery.

USB Drive

- External USB Drive: When connected to a computer via USB, the player is capable of storing any file type allowing the user a fast, convenient method of storing, retrieving, and transferring files. This includes word processing files, presentations, spreadsheets and any other computer files.
- Capacity: M4001/MC4001 - 1GB,
M4002/MC4002 - 2GB
- Connection: USB 2.0, Hi-speed capable

Software

- Includes the player applications and media management software.

Limited Warranty (U.S.)

What your warranty covers:

- Defects in materials or workmanship.

EN

For how long after your purchase:

- One year from date of purchase for labor and parts
- Warranty period for rental units begins with the first rental or 45 days from date of shipment to the rental firm, whichever comes first.

What we will do:

- Pay any Authorized RCA Audio Service Center the labor charges to repair your unit.
- Pay any Authorized RCA Audio Service Center for the new or, at our option, refurbished replacement parts required to repair your unit.

How you get service:

- Take your unit to any Authorized RCA Audio Service Center. To identify your nearest Authorized RCA Audio Service Center, ask your dealer, look in the Yellow Pages, or call 1-800-336-1900.
- Show the Authorized Service Center Representative your evidence of purchase date or first rental.
- Pick up your unit when repairs are completed.
- Proof of purchase in the form of a bill of sale or receipted invoice which is evidence that the product is within the warranty period must be presented to obtain warranty service. For rental firms, proof of first rental is also required.

What your warranty does not cover:

- Customer instruction. (Your Owner's Manual describes how to install, adjust, and operate your unit. Any additional information should be obtained from your dealer.)
- Installation and related adjustments.
- Signal reception problems not caused by your unit.
- Damage from misuse or neglect.
- Cleaning of audio heads.
- Batteries.
- A unit that has been modified or incorporated into other products or is used for institutional or other commercial purposes.
- A unit purchased or serviced outside the U.S.A.
- Acts of nature, such as but not limited to lightning damage.

Product Registration:

- Please complete and mail the Product Registration Card packed with your product. It will make it easier to contact you should it ever be necessary. The return of the card is not required for warranty coverage.

Limitation of Warranty:

- **THE WARRANTY STATED ABOVE IS THE ONLY WARRANTY APPLICABLE TO THIS PRODUCT. ALL OTHER WARRANTIES, EXPRESS OR IMPLIED (INCLUDING ALL IMPLIED WARRANTIES OF MERCHANTABILITY OR FITNESS FOR A PARTICULAR PURPOSE) ARE HEREBY DISCLAIMED. NO VERBAL OR WRITTEN INFORMATION GIVEN BY THOMSON INC., ITS AGENTS OR EMPLOYEES SHALL CREATE A WARRANTY OR IN ANY WAY INCREASE THE SCOPE OF THIS WARRANTY.**
- **REPAIR OR REPLACEMENT AS PROVIDED UNDER THIS WARRANTY IS THE EXCLUSIVE REMEDY OF THE CONSUMER. THOMSON INC. SHALL NOT BE LIABLE FOR INCIDENTAL OR CONSEQUENTIAL DAMAGES RESULTING FROM THE USE OF THIS PRODUCT OR ARISING OUT OF ANY BREACH OF ANY EXPRESS OR IMPLIED WARRANTY ON THIS PRODUCT. THIS DISCLAIMER OF WARRANTIES AND LIMITED WARRANTY ARE GOVERNED BY THE LAWS OF THE STATE OF INDIANA. EXCEPT TO THE EXTENT PROHIBITED BY APPLICABLE LAW, ANY IMPLIED WARRANTY OF MERCHANTABILITY OR FITNESS FOR A PARTICULAR PURPOSE ON THIS PRODUCT IS LIMITED TO THE APPLICABLE WARRANTY PERIOD SET FORTH ABOVE.**

How State Law relates to warranty:

- Some states do not allow the exclusion nor limitation of incidental or consequential damages, or limitations on how long an implied warranty lasts, so the above limitations or exclusions may not apply to you.
- This warranty gives you specific legal rights, and you also may have other rights that vary from state to state.

If you purchased your unit outside the United States:

- This warranty does not apply. Contact your dealer for warranty information.

Service calls which do not involve defective materials or workmanship are not covered by this warranty. Costs of such service calls are the sole responsibility of the purchaser.

Limited Warranty (Canada)

EN

What your warranty covers:

- Defects in materials or workmanship.

For how long after your purchase:

- One year from date of purchase for labor and parts.
- The warranty period for rental units begins with the first rental or 45 days from date of shipment to the rental firm, whichever comes first.

What we will do:

- Pay any Authorized RCA Audio Service Center the labor charges to repair your unit.
- Pay any Authorized RCA Audio Service Center for the new or, at our option, refurbished replacement parts required to repair your unit.

How you get service:

- Take your unit to any Authorized RCA Audio Service Center. To identify your nearest Authorized RCA Audio Service Center, ask your dealer, look in the Yellow Pages, or call 1-800-336-1900.
- Show the Authorized Service Center Representative your evidence of purchase date or first rental.
- Pick up your unit when repairs are completed.
- Proof of purchase in the form of a bill of sale or receipted invoice which is evidence that the product is within the warranty period must be presented to obtain warranty service. For rental firms, proof of first rental is also required.

What your warranty does not cover:

- Customer instruction. (Your Owner's Manual describes how to install, adjust, and operate your unit. Any additional information should be obtained from your dealer.)
- Installation and related adjustments.
- Signal reception problems not caused by your unit.
- Damage from misuse or neglect.
- Cleaning of audio heads.
- Batteries.
- A unit that has been modified or incorporated into other products or is used for institutional or other commercial purposes.
- A unit purchased or serviced outside Canada.
- Acts of nature, such as but not limited to lightning damage.

Product Registration

- Please complete and mail the Product Registration Card packed with your product. It will make it easier to contact you should it ever be necessary. The return of the card is not required for warranty coverage.

Limitation of Warranty:

- **THE WARRANTY STATED ABOVE IS THE ONLY WARRANTY APPLICABLE TO THIS PRODUCT. NO VERBAL OR WRITTEN INFORMATION GIVEN BY THOMSON MULTIMEDIA LTD., ITS AGENTS OR EMPLOYEES SHALL CREATE A GUARANTY OR IN ANY WAY INCREASE THE SCOPE OF THIS WARRANTY.**
- **REPAIR OR REPLACEMENT AS PROVIDED UNDER THIS WARRANTY IS THE EXCLUSIVE REMEDY OF THE CONSUMER. THOMSON MULTIMEDIA LTD. SHALL NOT BE LIABLE FOR INCIDENTAL OR CONSEQUENTIAL DAMAGES RESULTING FROM THE USE OF THIS PRODUCT. EXCEPT TO THE EXTENT PROHIBITED BY APPLICABLE PROVINCIAL LAW, ANY IMPLIED WARRANTY OF MERCHANTABILITY OR FITNESS FOR A PARTICULAR PURPOSE ON THIS PRODUCT IS LIMITED TO THE APPLICABLE WARRANTY PERIOD SET FORTH ABOVE.**

How Provincial Laws relates to warranty:

- This warranty gives you specific legal rights which are in addition to statutory warranties that may vary from Province to Province.

If you purchased your unit outside Canada:

- This warranty does not apply. Contact your dealer for warranty information.

Service calls which do not involve defective materials or workmanship are not covered by this warranty. Costs of such service calls are the sole responsibility of the purchaser.

IMPORTADOR

Comercializadora Thomson de México, S.A. de C.V.

Álvaro Obregón No. 151. Piso 13.

Col. Roma. Delegación Cuauhtémoc

C.P. 06700. México, D.F.

Telefono: 52-55-11-020360

RFC: CTM-980723-KS5

EXPORTER



Thomson Inc.

P.O. Box 1976

Indianapolis, IN 46206-1976

© 2007 Thomson Inc.

Trademark(s) ® Registered

Marca(s) ® Registrada(s)

Marque(s) ® Deposée(s)

www.rcaaudiovideo.com

Tocom (v4.0)