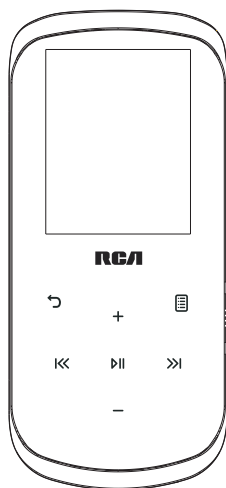




user manual

M45 series
M46 series



It is important to read this user manual prior to using your new product for the first time.

Important safety instructions

IMPORTANT SAFETY INSTRUCTIONS

PLEASE READ AND SAVE FOR FUTURE REFERENCE

Some of the following information may not apply to your particular product; however, as with any electronic product, precautions should be observed during handling and use.

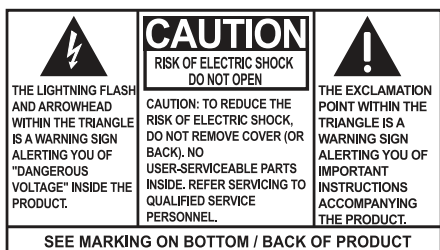
- Read these instructions.
- Keep these instructions.
- Heed all warnings.
- Follow all instructions.
- Do not use this apparatus near water.
- Clean only with dry cloth.
- Do not block any ventilation openings. Install in accordance with the manufacturer's instructions.
- Do not install near any heat sources such as radiators, heat registers, stoves, or other apparatus (including amplifiers) that produce heat.
- Do not defeat the safety purpose of the polarized or grounding-type plug. A polarized plug has two blades with one wider than the other. A grounding type plug has two blades and a third grounding prong. The wide blade or the third prong is provided for your safety. If the provided plug does not fit into your outlet, consult an electrician for replacement of the obsolete outlet.
- Protect the power cord from being walked on or pinched particularly at plugs, convenience receptacles, and the point where they exit from the apparatus.
- Only use attachments/accessories specified by the manufacturer.
- Use only with the cart, stand, tripod, bracket, or table specified by the manufacturer, or sold with the apparatus. When a cart is used, use caution when moving the cart/apparatus combination to avoid injury from tip-over.
- Unplug this apparatus during lightning storms or when unused for long periods of time.
- Refer all servicing to qualified service personnel. Servicing is required when the apparatus has been damaged in any way, such as power-supply cord or plug is damaged, liquid has been spilled or objects have fallen into the apparatus, the apparatus has been exposed to rain or moisture, does not operate normally, or has been dropped.



Portable Cart Warning

- **ADDITIONAL SAFETY INFORMATION**

- Main plug is used as disconnect device and it should remain readily operable during intended use. In order to disconnect the apparatus from the mains completely, the mains plug should be disconnected from the mains socket outlet completely.
- The AC/DC adapter supplied with this product is intended to be correctly oriented in a vertical or floor mount position.
- Do not use unauthorized chargers or power adapters. Use only chargers that came with your product or that is listed in the user's guide.
- Apparatus shall not be exposed to dripping or splashing and no objects filled with liquids, such as vases, shall be placed on the apparatus.
- Always leave sufficient space around the product for ventilation. Do not place product in or on a bed, rug, in a bookcase or cabinet that may prevent air flow through vent openings.
- Do not place lighted candles, cigarettes, cigars, etc. on the product.
- Connect power cord only to AC power source as marked on the product.
- Care should be taken so that objects do not fall into the product.
- Do not attempt to disassemble the cabinet. This product does not contain customer serviceable components.
- The marking information is located at the bottom of apparatus.
- Caution marking is located at bottom of apparatus.



WARNING: TO PREVENT FIRE OR ELECTRICAL SHOCK HAZARD, DO NOT EXPOSE THIS PRODUCT TO RAIN OR MOISTURE.



This equipment is a Class II or double insulated electrical appliance. It has been designed in such a way that it does not require a safety connection to electrical earth.

Important battery information

Warning: Your product contains a battery and charging system which is designed to work in temperatures that do not exceed 50°C (122°F). Leaving this product in a closed automobile or the trunk of an automobile where temperatures may exceed 50°C may result in permanent battery damage, fire, or explosion. Please remove your product from the automobile when you exit, do not place your product in the trunk of your automobile, and do not leave your product in any location where temperatures may exceed 50°C or expose to direct sunlight.

Ecology

Help protect the environment - we recommend that you dispose of used batteries by putting them into specially designed receptacles.

Precautions for the unit

- Do not use the unit immediately after transportation from a cold place to a warm place; condensation problems may result.
- Do not store the unit near fire, places with high temperature or in direct sunlight. Exposure to direct sunlight or extreme heat (such as inside a parked car) may cause damage or malfunction.
- Do not expose to rain or moisture.
- Clean the unit with a soft cloth or a damp chamois leather. Never use solvents.
- The unit must only be opened by qualified personnel.

Headset safety

To use a headset safely, please keep the following in mind:

- Do not play your headset at a high volume. Hearing experts advise against continuous extended play.
- If you experience ringing in your ears, turn down the volume or stop using the headset.
- Do not use a headset while driving a motorized vehicle or riding a bike. It may cause a traffic hazard and is illegal in many areas.
- Even if your headset is an open-air type designed to let you hear outside sounds, don't turn up the volume so high that can't hear sounds around you.

FCC Information

This equipment has been tested and found to comply with the limits for a Class B digital device, pursuant to Part 15 of FCC Rules. These limits are designed to provide reasonable protection against harmful interference in a residential installation. This equipment generates, uses, and can radiate radio frequency energy and, if not installed and used in accordance with the instructions, may cause harmful interference to radio communications.

However, there is no guarantee that interference will not occur in a particular installation. If this equipment does cause harmful interference to radio or television reception, which can be determined by turning the equipment off and on, the user is encouraged to try to correct the interference by one or more of the following measures:

- Reorient or relocate the receiving antenna.
- Increase the separation between the equipment and receiver.
- Connect the equipment into an outlet on a circuit different from that to which the receiver is connected.
- Consult the dealer or an experienced radio/TV technician for help.

Modifications not expressly approved by the party responsible for compliance could void the user's authority to operate the equipment.

Manufacturer/Responsible Party
Audiovox Electronics Corp.,
150 Marcus Blvd., Hauppauge, NY 11788

1-317-810-4880 (No technical /product support is available via this number. This phone number is for regulatory matters only.)

Visit www.rcaudiovideo.com for technical support



RCA
M4508



RCA
M4604



RCA
M4608



RCA
M4616

This Class B digital apparatus complies with Canadian ICES-003.

Cet appareil numérique de la class B est conforme à la norme NMB-003 du Canada.

Contents

Important safety instructions

IMPORTANT SAFETY INSTRUCTIONS	1
Important battery information	2
Ecology.....	2
Precautions for the unit	2

FCC Information.....	3
-----------------------------	----------

End user license agreement	7
-----------------------------------------	----------

Before you begin

Copyright warning.....	9
Back up your data	9
Unpacking your player.....	9
Computer system requirements.....	9
Secure music transfer requirements	9
Connecting to the computer	10
Charging the player.....	10

Managing files on your RCA Player

Using RCA easyRip.....	11
Deleting files from the player.....	12
Disconnecting the player from the PC.....	12

General controls

Turning the player on and off.....	13
Locking the player controls.....	13
Resetting the player	13

Using the menus

Menu types.....	14
Menu navigation	14
The Home menu.....	16

Music

Playing music files.....	17
Music playback.....	18

Videos

Playing video files20
Video viewing20

Pictures

Playing picture files21
Picture viewing21

Audiobooks

Playing audiobooks22
Audiobooks playback controls22
Skipping through audiobook sections23

Radio

Playing FM radio24
Storing and recalling preset stations24
Improving FM radio sound25
Playing back FM radio recordings25
Copying recordings to your PC25

Favorites

Creating a "Favorites" playlist26
Removing files from "Favorites" playlist26
Downloading playlists to player26

Voice Memo

Recording voice memo27
Playing back voice memo27
Copying recordings to your PC27

Settings

Changing the player's settings.....	28
Shuffle	28
Repeat	28
Equalizer	28
Customize menu	28
Slideshow.....	28
Brightness	28
Screensaver	28
Power save	28
RecDur (Record duration)	29
FreqStep (Frequency Step)	29
Language	29
Protocol.....	29
System info.....	29
Restore defaults	29

Additional information

Tips and troubleshooting.....	30
For your records	32
Visiting RCA website	32
Technical specification	32
Specifications.....	32

Warranty information

Limited warranty	33
------------------------	----

End user license agreement

This is a copy of the EULA that you need to agree to in order to use this product.



End user license agreement

IMPORTANT: READ CAREFULLY BEFORE DOWNLOADING OR INSTALLING THIS SOFTWARE!

THIS END USER LICENSE AGREEMENT (THIS "EULA") IS A LEGAL AGREEMENT BETWEEN YOU AND AUDIOVOX CORPORATION AND, AS APPLICABLE, ANY AUDIOVOX SUBSIDIARY, AS DEFINED BELOW (COLLECTIVELY "AUDIOVOX"), FOR THE RCA BRANDED PORTABLE DIGITAL AUDIO/VIDEO DEVICE APPLICATION/DRIVER SOFTWARE PROGRAM WHICH MAY INCLUDE ASSOCIATED SOFTWARE COMPONENTS, SOFTWARE LICENSED BY AUDIOVOX FROM THIRD PARTIES ("LICENSORS") AND ASSOCIATED DOCUMENTATION, IF ANY (COLLECTIVELY, THE "PROGRAM"). THIS EULA CONTAINS IMPORTANT LEGAL LIMITATIONS, RESTRICTIONS AND DISCLAIMERS, AND ALSO SPECIFIES THE DURATION OF YOUR LICENSE.

BY INSTALLING THE PROGRAM OR CLICKING ON THE ACCEPTANCE BUTTON OF THE PROGRAM, COPYING OR OTHERWISE USING THE PROGRAM, YOU ACKNOWLEDGE AND AGREE THAT YOU HAVE READ THIS EULA, UNDERSTAND IT, AND AGREE TO BE BOUND BY ITS TERMS AND CONDITIONS. THIS PROGRAM IS PROTECTED BY COPYRIGHT LAWS AND INTERNATIONAL COPYRIGHT TREATIES, AS WELL AS OTHER INTELLECTUAL PROPERTY LAWS AND TREATIES. YOU MAY USE THE PROGRAM ONLY IN ACCORDANCE WITH THIS EULA, AND ANY SUCH USE IS HEREBY UNDERSTOOD TO BE CONDITIONAL UPON YOUR SPECIFIC AGREEMENT TO THE UNMODIFIED TERMS SET FORTH HEREIN. IF YOU DO NOT AGREE WITH ALL OF THE TERMS OF THIS EULA, CLICK ON THE REJECTION BUTTON AND/OR DO NOT INSTALL THE PROGRAM AND/OR DO NOT USE THE PROGRAM.

1. LICENSE

- (a) Under this EULA, you are granted a non-exclusive, non-sublicenseable, non-assignable and non-transferable (except as expressly set forth below) license (i) to use and install the Program on a single workstation, and (ii) to make one (1) copy of the Program into any machine-readable form for backup of the Program, provided the copy contains all of the original Program's proprietary notices.
- (b) You may transfer the Program and license to another party only as a part of the RCA branded Portable Digital Audio/Video Device ("A/V Device"), and only if the other party agrees to accept the terms and conditions of this EULA. If you transfer the Program, you must at the same time either transfer all copies to the same party or destroy any copies not transferred.
- (c) The terms of this EULA will govern any software upgrades or updates provided by AUDIOVOX that replace and/or supplement the original Program, unless such upgrade or update is accompanied by separate license terms and conditions in which case the terms of that separate license will govern. You acknowledge and agree that AUDIOVOX may automatically download upgrades or updates to the Program software to your computer in order to update, enhance, and/or further develop the Program.

2. LICENSE RESTRICTIONS

- (a) Except for the licenses expressly granted to you in this EULA, no other licenses or rights are granted or implied.
- (b) You may not (i) make the Program available over a network where it could be used by multiple computers at the same time; (ii) modify, translate, reverse engineer, decompile, disassemble (except to the extent that this restriction is expressly prohibited by law), or create derivative works based upon the Program; (iii) copy the Program, except as expressly permitted herein; (iv) remove or alter any copyright notices on all copies of the Program; or (v) rent, lease or lend the Program. You agree that you shall only use the Program in a manner that complies with all applicable laws in the jurisdictions in which you use the Program, including, but not limited to, applicable restrictions concerning copyright and other intellectual property rights.
- (c) The Program may contain pre-release code that does not perform at the level of a final code release. In such case, the Program may not operate properly. Updated versions of the Program may be downloaded from www.rcaaudiovideo.com/downloads
- (d) AUDIOVOX is not obligated to provide support services for the Program.
- (e) The Program is provided with "RESTRICTED RIGHTS". Use, duplication, or disclosure by the U.S. Government is subject to restrictions as set forth in subparagraph (c)(1)(ii) of DFARS 252.227-7013, or FAR 52.227-19, or in FAR 52.227-14 Alt. III, as applicable.

3. TERM AND TERMINATION

- (a) Your license is effective on the date you accept this EULA and remains in effect until this EULA is terminated by either party.
- (b) You may terminate this EULA and the associated license, without any notice or delay, by destroying or permanently erasing the Program and all copies thereof.
- (c) If you fail to comply with any of the terms of this EULA, in whole or part, your license will automatically terminate without notice from AUDIOVOX.
- (d) Upon termination of this EULA and your associated license, you shall cease all use of the Program and destroy or permanently erase the Program and all full or partial copies thereof.

4. WARRANTY DISCLAIMER

THE PROGRAM IS PROVIDED "AS IS" WITHOUT WARRANTY OF ANY KIND, EITHER EXPRESSED OR IMPLIED, INCLUDING, BUT NOT LIMITED TO THE IMPLIED WARRANTIES OF MERCHANTABILITY, FITNESS FOR A PARTICULAR PURPOSE, TITLE OR NON-INFRINGEMENT. THE ENTIRE RISK AS TO THE QUALITY AND PERFORMANCE OF THE PROGRAM IS WITH YOU. SHOULD THE PROGRAM PROVE DEFECTIVE, YOU (AND NOT AUDIOVOX, ITS SUPPLIERS, OR ITS DEALERS) ASSUME THE ENTIRE COST FOR ALL NECESSARY REPAIR OR CORRECTION.

This exclusion of warranty may not be allowed under some applicable laws. As a result, the above exclusion may not apply to you, and you may have other rights depending on the law that applies to you.

5. OWNERSHIP RIGHTS

All title and intellectual property rights, including but not limited to copyrights, in and to the Program and any copies thereof are owned by AUDIOVOX, its Licensors or its suppliers. All title and intellectual property rights in and to the content which may be

accessed through use of the Program is the property of the respective content owner and may be protected by applicable copyright or other intellectual property laws and treaties. This license grants you no rights to use such content. All rights not expressly granted are reserved by AUDIOVOX or its Licensors.

6. LIMITATION OF LIABILITY

- (a) TO THE MAXIMUM EXTENT PERMITTED BY APPLICABLE LAW, IN NO EVENT SHALL AUDIOVOX, OR ITS DEALERS BE LIABLE FOR ANY SPECIAL, INCIDENTAL, INDIRECT, OR CONSEQUENTIAL DAMAGES WHATSOEVER (INCLUDING, WITHOUT LIMITATION, DAMAGES FOR LOSS OF PROFITS, BUSINESS INTERRUPTION, CORRUPTION OF FILES, LOSS OF BUSINESS INFORMATION, OR ANY OTHER PECUNIARY LOSS) REGARDLESS OF CAUSE OR FORM OF ACTION, INCLUDING CONTRACT, TORT, OR NEGLIGENCE, ARISING OUT OF YOUR USE OF OR INABILITY TO USE THE PROGRAM, EVEN IF AUDIOVOX HAS BEEN ADVISED OF THE POSSIBILITY OF SUCH DAMAGES. BECAUSE SOME STATES AND JURISDICTIONS DO NOT ALLOW THE EXCLUSION OR LIMITATION OF LIABILITY OF CONSEQUENTIAL OR INCIDENTAL DAMAGES, THE ABOVE LIMITATION MAY NOT APPLY TO YOU.
- (b) YOU ASSUME RESPONSIBILITY FOR THE SELECTION OF THE APPROPRIATE PROGRAM TO ACHIEVE YOUR INTENDED RESULTS, AND FOR THE INSTALLATION, USE, AND RESULTS OBTAINED.

7. WINDOWS MEDIA

The software embedded within your A/V Device (the "Device Firmware") contains software licensed from Microsoft that enables you to play Windows Media Audio (WMA) files ("WMA Software"). The WMA Software is licensed to you for use with your A/V Device under the following conditions. By installing and using this version of the Device Firmware, you are agreeing to these conditions. IF YOU DO NOT AGREE TO THE END USER CONDITIONS OF THIS SECTION 7, DO NOT INSTALL OR USE THIS VERSION OF THE DEVICE FIRMWARE.

The WMA Software is protected by copyright and other intellectual property laws. This protection also extends to documentation for the WMA Software, whether in written or electronic form.

GRANT OF LICENSE: The WMA Software is only licensed to you as follows:

You may use this version of the Device Firmware containing the WMA Software only as such use relates to your A/V Device.

You may not reverse engineer, decompile, or disassemble the WMA Software, except and only to the extent that such activity is expressly permitted by applicable law.

You may transfer your right to use the Device Firmware only as part of a sale or transfer of your A/V Device, on the condition that the recipient agrees to the conditions set forth herein. If the version of the Device Firmware that you are transferring is an upgrade, you must also transfer all prior versions of the Device Firmware that you have which include the WMA Software.

MICROSOFT IS NOT PROVIDING ANY WARRANTY OF ANY KIND TO YOU FOR THE WMA SOFTWARE, AND MICROSOFT MAKES NO REPRESENTATION CONCERNING THE OPERABILITY OF THE WMA SOFTWARE.

The WMA Software is of U.S. origin. Any export of this version of the Device Firmware must comply with all applicable international and national laws, including the U.S. Export Administration Regulations, that apply to the WMA Software incorporated in the Device Firmware.

Content owners use Windows Media digital rights management technology ("WMDRM") to protect their intellectual property, including copyrights. This device uses WMDRM software to access WMDRM-protected content. If the WMDRM software fails to protect the content, content owners may ask Microsoft to revoke the software's ability to use WMDRM to play or copy protected content. Revocation does not affect unprotected content. When you download licenses for protected content, you agree that Microsoft may include a revocation list with the licenses. Content owners may require you to upgrade WMDRM to access their content. If you decline to accept an upgrade, you will not be able to access content that requires the upgrade.

8. THIRD PARTY SOFTWARE

ANY THIRD PARTY SOFTWARE THAT MAY BE PROVIDED WITH THE PROGRAM IS INCLUDED FOR USE AT YOUR OPTION. IF YOU CHOOSE TO USE SUCH THIRD PARTY SOFTWARE, THEN SUCH USE SHALL BE GOVERNED BY SUCH THIRD PARTY'S LICENSE AGREEMENT, AN ELECTRONIC COPY OF WHICH WILL BE INSTALLED IN THE APPROPRIATE FOLDER ON YOUR COMPUTER UPON INSTALLATION OF THE SOFTWARE. AUDIOVOX IS NOT RESPONSIBLE FOR ANY THIRD PARTY'S SOFTWARE AND SHALL HAVE NO LIABILITY FOR YOUR USE OF THIRD PARTY SOFTWARE.

9. GOVERNING LAW

If you acquired this A/V Device in the United States, this EULA shall be governed and construed in accordance with the laws of the State of Indiana, U.S.A. without regard to its conflict of laws principles. If you acquired this A/V Device outside the United States or the European Union, then local law may apply.

10. GENERAL TERMS

This EULA can only be modified by a written agreement signed by you and AUDIOVOX, and changes from the terms and conditions of this EULA made in any other manner will be of no effect. If any portion of this EULA shall be held invalid, illegal, or unenforceable, the validity, legality, and enforceability of the remainder of the Agreement shall not in any way be affected or impaired thereby. This EULA is the complete and exclusive statement of the agreement between you and AUDIOVOX, which supersedes all proposals or prior agreements, oral or written, and all other communications between you and AUDIOVOX, relating to the subject matter of this hereof. AUDIOVOX'S Licensors shall be considered third party beneficiaries of this Agreement and shall have the right to enforce the terms herein.

"AUDIOVOX SUBSIDIARY" shall mean any person, corporation, or other organization, domestic or foreign, including but not limited to subsidiaries, that is directly or indirectly controlled by Audiovox Corporation including, but not limited to, Audiovox Consumer Electronics, Inc. and Audiovox Electronics Corporation. For purposes of this definition only, the term "control" means the possession of the power to direct or cause the direction of the management and policies of an entity, whether by ownership of voting stock or partnership interest, by contract, or otherwise, including direct or indirect ownership of at least fifty percent (50%) of the voting interest in the entity in question.

Before you begin

Dear RCA Customer,

Thank you for purchasing the Player. This product will play mp3 and Windows Media™ audio (WMA) content as well as content purchased from most online music download services.

RCA easyRip™ Media Software, installed automatically when you connected this player to your PC, lets you import music files from CDs and other sources, organize your music library, and transfer unprotected MP3 and WMA files to and from this player.

To transfer DRM-protected files to this player, you must use the application provided by the online music store.

Copyright warning

This player is for your personal use only. Unauthorized recording or duplication of copyrighted material may infringe upon the rights of third parties and may be contrary to copyright laws.

Back up your data

As with any portable player, you must back up the drive regularly. The manufacturer is not responsible for lost data.

Unpacking your player

All of the items listed below should have been packed in the box with your player.

- RCA player (contains music management software installer and user manual)
- Quick Start Guide
- USB cable
- Earphones

Computer system requirements

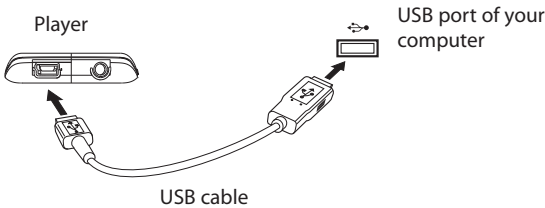
- Pentium III 500MHz or higher recommended
- Windows® XP (service pack 1 or higher) or Windows Vista™ or Windows® 7
- Internet Explorer 6.0 or higher with Internet access
- Windows Media Player 10 or higher
- 250MB or more free hard disk space for the software
- 128MB RAM (256MB recommended)
- CD-ROM drive capable of digital audio extraction
- USB port (2.0 recommended)
- Sound card

Secure music transfer requirements

The default setting of this player is in **MSC** (Mass Storage Class) mode when connected to your PC. To enable function of transferring subscription music content to the player, select **MTP** (Media Transfer Protocol) mode under **Protocol** in the player's **Settings** menu (refer to page 29).

Connecting to the computer

- Connect the player to your computer with the USB cable provided. The player will turn on automatically.
- The player will be connected in MSC (Mass Storage Class) mode. It will appear as a drive letter on your computer and behave as a detachable drive for file transfer in one or both directions.
- The RCA easyRip™ Media Software installer is stored in the player, go to **MyComputer** in the Start menu, find and open the drive letter associated with the player (i.e. LYRA) and then double-click the **rcaeasyrip_setup** file to launch the installer.
- The software installer can be deleted from the player after installation to free up more storage spaces.




To enable function of launching RCA easyRip installer stored in the player, the player must be in **MSC** mode which can be selected under **Protocol** in the **Settings** menu. The default setting of this player is already in MSC mode. Refer to page 29 for more information.



- It might take several seconds for the player to be detected. Click **Refresh** in My Computer or Windows Explorer to make sure the player has been detected.
- The player is capable of transferring files at USB 2.0. If USB 2.0 port is available on your computer, use it to connect to your player. The player is still backward compatible with the older USB 1.1 ports. However, you will not be able to take full advantage of the potential speed increase.
- **IMPORTANT:** Don't disconnect the USB cable to the PC or the player during the software installation.



Charging the player

The player charges automatically every time you connect it to your computer. To fully charge the player, make sure your computer is on and the device is connected for at least 3 hours. Refer to the battery level icon  on the display to check the battery level. Recharge the player when the icon is empty.

*The latest software can be downloaded from www.rcaaudiovideo.com.

Managing files on your RCA Player

Before you begin using your RCA player, you'll want to copy your media files to the player. You can use any of the following methods to transfer content:

- RCA easyRip
- Drag and drop files in Windows Explorer
- Software provided by online music stores

To transfer DRM-protected content, use the software provided by the online music store.

The following sections explain how to copy unprotected files to the player. For instructions on transferring protected files, please refer to the documentation for the software you use to transfer the files.

Using RCA easyRip

The RCA easyRip software was installed automatically the first time you connected this player to your PC.

easyRip lets you:

- Import music from CDs
- Organize your music library on your PC
- Create playlists
- Copy files from your library to the player
- Copy files from the player to your library
- Delete files from the player

- Drag-and-drop picture files onto the root level or a specific folder of the player for viewing.
- Video files must be converted and transferred via RCA easyRip for playback.



To start easyRip:

- Click on the RCA system tray icon and select **RCA easyRip** from the menu.
- Double-click the easyRip icon on your PC's desktop. The easyRip dock appears at the side of your screen.



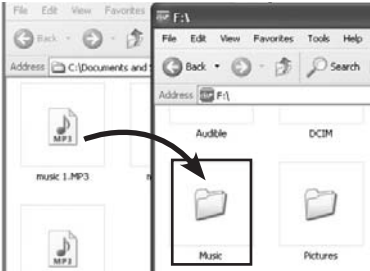
- Video files must be transferred via easyRip, which automatically converts the files to optimal format.
- **Help** – For detailed explanation on using easyRip, click the Help widget on the module dock.



Using Windows Explorer

To copy files in Windows XP with Windows Media Player 10 installed:

1. Open the player in Windows Explorer.
2. Drag and drop music files onto the **Music** folder.



To copy files in Windows Vista or Windows® 7 or Window XP with Windows Media Player 11 installed:

1. Open the player in Windows Explorer
2. Open **Internal Storage**.



Internal Storage

3. Drag and drop music files.

Deleting files from the player

For any files you have transferred to the player, you may delete them while you have connected the player with your computer.


1. Open the player in Windows Explorer and then navigate to the folder containing the files.
2. Select the files you want to remove and then press the Delete key on the keyboard of your PC.
 - It is best to remove subscription files from the player by using Windows Media Player.

Disconnecting the player from the PC

If Windows sees the player as an MTP device:

- Unplug the player from the PC when no file transfer is in progress.

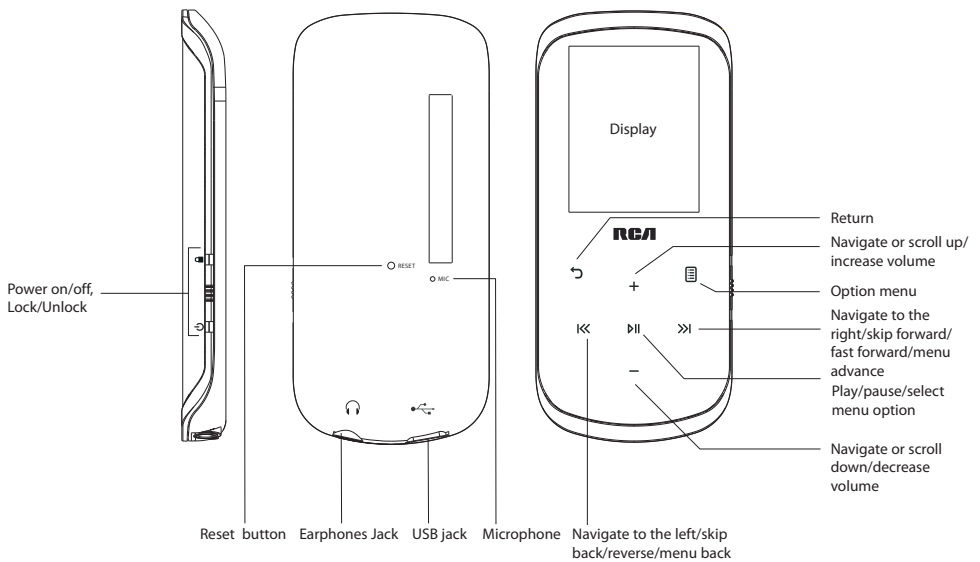
If Windows sees the player as a removable disk:

1. In the Windows system tray, click the **Safely Remove Hardware** icon  and then select the player from the list of devices.
2. When the **Safe to remove hardware** message appears, unplug the player from the PC.

Do not disconnect the USB connection during file download. Doing so may corrupt system files or the files being downloaded.



General controls



Turning the player on and off

To turn the player on, slide downward. Slide downward again to turn the player off.

Locking the player controls

To lock the player controls to prevent them from being activated accidentally, slide upward. To unlock, slide to the middle position. When the controls are locked, the message "Keys Locked" appears on the display.

Resetting the player

If the player stops operating properly, you can reset it by pressing the **RESET** button on the back of the player with a non-metal pointed object (e.g. toothpick).

Using the menus

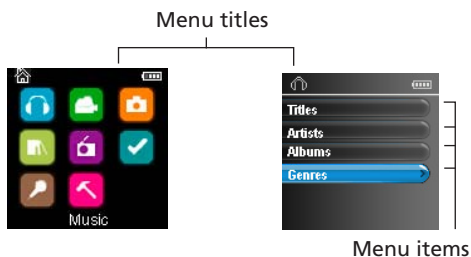
Menu types

The player has two types of menu:

Player menu

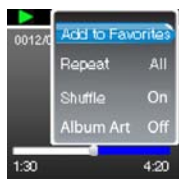
The player menu appears when you turn on the player or if you press and hold \curvearrowright while listening to the player. It lets you:

- Browse for and play music, audiobook, video and picture files
- Listen to the radio
- Record and play back voice memos
- Change the player's settings – language, display brightness, etc.



Option menu

The option menu appears if you press \mathbb{I} at the playback (Now playing) screen while listening to the player. It provides different options depending on what you are listening to when you press \mathbb{I} .

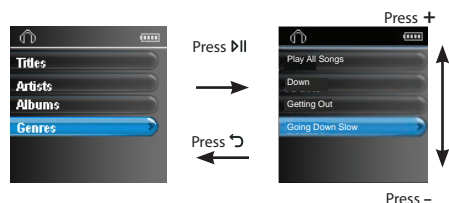


"Now playing" screen

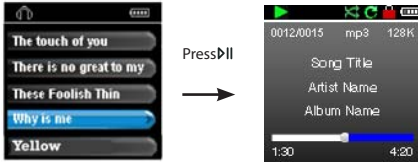
Menu navigation

When a menu is displayed:

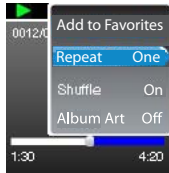
- Press + and – to scroll up and down the list of menu items.
- Press \mathbb{I} to go to the next menu level. Press \curvearrowright to return to the previous menu level.



- If the highlighted item is playable (for example, an audio file), press **▶||** to start playback.



- If the highlighted item indicates the current setting (for example, the repeat mode setting), press **▶||** to change the setting.



The Home menu

The top-level or “Home” menu is always displayed when you press and hold **↶**. The menu options are:



Music

Press **▶||** to enter the Music menu and choose an artist, album, genre or individual title.



Videos

Press **▶||** to enter the Videos menu and choose a particular video for viewing.



Pictures

Press **▶||** to enter the Pictures menu and choose a particular image for viewing.



Audiobooks

Press **▶||** to enter the Audiobook menu and choose a particular audiobook for listening.



Radio

Press **▶||** to enter the Radio menu and choose to either listen to the radio or play recordings of previous radio shows.



Favorites

As you listen to music, you can add individual titles to a “favorites” playlist. Press **▶||** to enter the Favorites menu and choose a particular title or edit the playlist.



Voice memo

Press **▶||** to enter the Voice memo menu and choose to either start recording or play recordings of previous voice memo.



Settings

Press **▶||** to enter the Settings menu, which lets you:

- Choose the shuffle playback mode
- Choose a repeat playback mode
- Choose an equalizer setting
- Customize the music menu
- Set the slideshow image duration
- Change the screen brightness
- Change the screensaver setting
- Choose the power saving setting
- Choose a record duration setting
- Switch between US and European radio frequency steps
- Change the language of the player’s menus
- Switch between MTP and MSC modes
- Display the firmware version, space used, and space available
- Reset the player’s settings to the factory defaults



Now Playing

Available only during playback.

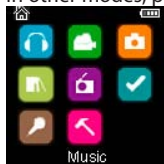
Press **▶||** to return to the currently playing file.

Music

Playing music files

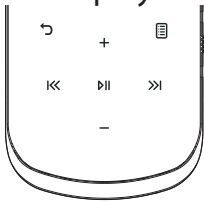
The player sorts your music files by track name (title), artist, album and genre.

1. In other modes, press and hold ↵ to display the Home menu. Press + or – and ⏪ or ⏩ to select **Music**.



2. Press ▶|| to enter the Music menu.
3. Use + or – and ⏪ or ⏩ to navigate through the menus and select the desired item, then press ⏩ or ▶|| to start listening.

Music playback





⏮	Skips to the previous file, press and hold to scan backwards within a file
⏭	Skips to the next file, press and hold to scan forward within a file
▶	Starts/ pauses playback
+ or -	Increases or decreases the volume during playback
☰	Shows/hides option menu
↶	Back to previous navigation level. Press and hold to enter Home menu

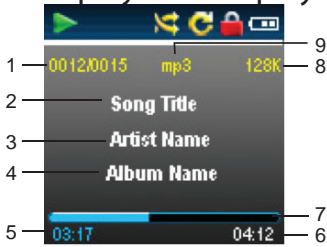
Option menu (music playback)

Press ☰ at the playback (Now playing) screen to show the Option menu. Press + or - to highlight an option and then press ▶|| to confirm the selection or change the setting.

The following options are available:

- **Add to Favorites/Clear from Favorites** – to add the current file in the Favorites playlist (read page 26). If the file is already in the playlist, this option changes to **Clear from Favorites** to remove the current file from the playlist
- **Repeat** – press ▶|| repeatedly to select repeat current  or all files  (corresponding icon shows on the display)
- **Shuffle** – to play randomly when shuffle is activated.
- **Album Art** – to show the album art.
- **Equalizer** – to select an equalizer mode. Options available: Flat, Bass, Pop, Rock and Jazz.
- **Delete** – to remove current file from the player.

Music playback display



1. Current file number/total number of files
2. Song name
3. Artist name
4. Album name
5. Elapsed playback time
6. File total time
7. Playback progress bar
8. File bitrate
9. File type

The information provided in the playback screen depends upon the ID3 tags that have been set up for the music file.

Videos

Playing video files

1. In other modes, press and hold ⏪ to display the Home menu. Then press + or – and ⏪ or ⏩ to select **Videos**.



2. Press ▶|| to enter Videos.
3. Use + or – and ⏪ or ⏩ to navigate through the menus and select the desired item, then press ⏩ or ▶|| to start viewing.

Video viewing



⏪	Goes back, skips backward. Press and hold to scan backwards within a file
⏩	Advances, skips forward. Press and hold to scan forward within a file
▶	Starts/pauses playback
+ or –	Increases or decreases the volume during playback
☰	Shows/hides option menu
↶	Back to previous navigation level. Press and hold to enter Home menu

Option menu (video playback)

Press ▶|| to pause the video playback. Press ☰ to show the Option menu. Press + or – to highlight an option and then press ▶|| to confirm the selection or change the setting.

The following option is available:

- **Delete Video** – to remove current file from the player

Video files must be converted to optimal format for playback on this player. The RCA easyRip Media Software can convert the video files automatically while transferring to the player.



Pictures

Playing picture files

1. In other modes, press and hold \curvearrowright to display the Home menu. Then press + or – and \lll or \ggg to select

Pictures.



2. Press \ggg to enter Pictures.
3. Use + or – and \lll or \ggg to navigate through the menus and select the desired item, then press \ggg or \ggg to start viewing.

Picture viewing



\lll	Goes back, skips backward
\ggg	Advances, skips forward
\ggg	Starts/pauses slideshow if it is activated
\lll	Shows/hides option menu
\curvearrowright	Back to previous navigation level. Press and hold to enter Home menu

Option menu (picture viewing)

Press \ggg to pause the picture playback. Press \lll to show the Option menu. Press + or – to highlight an option and then press \ggg to confirm the selection or change the setting.

The following options are available:

- **Slideshow Timing** – to select the viewing time for each picture during a slideshow. Press \ggg repeatedly to select among options
- **Delete Photo** – to remove current file from the player

Refer to page 11 for transferring picture files to the player.



Audiobooks

Playing audiobooks

Audiobook playback is similar to music playback.

1. In other modes, press and hold ⏪ to display the Home menu. Then press + or – and ⏮ or ⏭ to select **Audiobooks.**



2. Press ▶|| to enter Audiobooks.
3. Use + or – and ⏮ or ⏭ to navigate through the menus and select the desired item, then press ⏭ or ▶|| to start listening.

Audiobooks playback controls



⏮	Skips to previous file/section, press and hold to scan backward within a file
⏭	Skips to the next file or section, press and hold to scan forward within a file
▶	Starts/pauses playback
+ or –	Increases or decreases the volume during playback
☰	Shows/hides option menu
⏪	Back to previous navigation level. Press and hold to enter Home menu

Option menu (Audiobook playback)

Press ▶|| at the playback (Now playing) screen to pause the playback and press ☰ to show the Option menu. Press + or – to highlight an option and then press ⏭ to confirm the selection or change the setting.

The following options are available:

- **Skip** – to select section-by-section or file-by-file skipping (read below section for details)
- **Delete** – to remove current file from the player
- **CoverArt** – to select to show the cover art of the playing audible file or not

Skipping through audiobook sections

If the currently playing audiobook contains sections, you can choose to skip forward and back between sections when you press ◀◀ or ▶▶, instead of skipping between files.

To choose section-by-section skipping:

1. Press ▶|| to pause playback and press ⏸ to display the Option menu.
2. Press + or - to select **Skip**, then press ▶|| to switch to **Section**.
3. Press ⏸ to resume playback.
 - Section-by-section skipping is indicated by **Sect** on the display. Press ↶ or ⏸ to resume playback screen.
 - The player returns to file-by-file skipping automatically when you play another file or turn the player off.

Radio

The radio uses the earphones as an antenna. For better reception, extend the earphone cable as far as possible.



Playing FM radio

To turn the radio on:

1. In other modes, press and hold \curvearrowright to display the Home menu.



2. Press + or – and \lll or \ggg to select **Radio** and press \ggg to enter the radio menu.
3. While **Listen** is highlighted, press \ggg or \ggg to start listening. The frequency screen appears.

To tune the radio:

- Press and hold \lll or \ggg to start scanning through the frequency range. The player stops scanning when it detects the next station.
- Press \lll or \ggg to step through the frequency range.

To turn the radio off:

- Turn the player off
- In other modes, press and hold \curvearrowright to display the Home menu and select other modes.

Storing and recalling preset stations

You can store up to 20 preset stations in the player.

To store the currently playing station as a preset:

1. Press \mathbb{O} to display the Option menu.
2. Press + or – to highlight **Save to Preset** and then press \ggg .
 - If all 20 preset station numbers are occupied, you will replace the existing station with the new station.
3. The first available preset number is displayed. Press + or – to select a different preset number if desired.
 - If you choose a preset number that already contains an FM station, you will replace the existing station with the new station.
4. Press \ggg to highlight **Yes** and then press \ggg

To listen to a preset station:

1. When the radio is playing, press \mathbb{O} to display the Option menu.
2. Press + or – to highlight **Tuning** and press \ggg to switch from **Manual** to **Preset**.
3. Press \curvearrowright or \mathbb{O} to exit the menu.
4. Press \lll or \ggg to choose the desired station preset number.

Improving FM radio sound

If stereo reception is noisy, you can often reduce the noise by switching to mono.

To switch between stereo and mono:

1. While the radio is playing, press **⏸** to display the Option menu.
2. Press + or – to highlight **Mode** and then press **▶||** to switch between **Stereo** and **Mono**.
3. Press **↶** or **⏸** to exit the menu.

Recording FM radio

You can record the radio and play back recordings as well as copy the recordings (WAV files) to your PC.

To record the currently playing radio station:

1. Press **⏸** to display the Option menu.
2. Press + or – to highlight **Start Recording** and then press **▶||** to start recording.
 - Press **▶||** to pause or resume recording.
3. Press **⏸** and then select **Stop Recording** by pressing **▶||**. The player names each recording *FMRecXXX* where *XXX* is a unique number.

Playing back FM radio recordings

To play back a recording:

1. In other modes, press and hold **↶** to display the Home menu.
2. Press + or – and **⏪** or **⏩** to select **Radio** and press **▶||** to enter the radio menu.
3. Press + or – to highlight **Playback** and press **⏩** or **▶||** to see the list of recordings.
4. Press + or – to select a recording and press **⏩** or **▶||** to start playback.

Copying recordings to your PC

Recordings are stored as WAV files in the "Recordings\FMRecord" folder on the player.

To copy recordings to the PC:

1. Plug the player into the PC.
2. Open the player's Record folder.
3. Select the files you want to copy and drag and drop them onto a folder on the PC.
 - Almost all audio applications can play WAV files.

Favorites

Creating a "Favorites" playlist

You can create a playlist of your favorite music by adding new files to the playlist as you listen to them. This function is not available for other media formats such as videos, pictures, audiobooks and recordings.

To add the currently playing music file in the playlist:

1. Press **⏸** to display the Option menu.
2. Press **+** or **-** to highlight **Add to Favorites** and then press **▶▶**.
 - **Added Successfully** shows on the display.
 - Repeat the above steps for adding more music files.

To listen to the Favorites playlist:

1. In other modes, press and hold **⏠** to display the Home menu.



2. Then press **+** or **-** and **⏪** or **⏩** to select **Favorites**.

To play back a particular file, press **▶▶** to enter the Favorites menu and then press **⏩** or **▶▶** to list the files. Press **+** or **-** to select the desired file and press **⏩** or **▶▶**.

Removing files from "Favorites" playlist

To remove all music files from the playlist:

1. In other modes, press and hold **⏠** to display the Home menu.



2. Then press **+** or **-** and **⏪** or **⏩** to select **Favorites** and press **▶▶** to enter.
3. Press **+** or **-** to highlight **My Selection** and press **⏸**.
4. In the pop-up menu, select **Delete** and then press **▶▶** to remove all files from the playlist.

Downloading playlists to player

You can also download playlists of your favorite music created on the RCA easyRip software. Please refer to the Help section of the easyRip software for details on creating playlists and downloading the created playlists to the player.

Voice Memo

Recording voice memo

You can record voice and play back recordings as well as copy the recordings (WAV files) to your PC.

To record voice:

1. In other modes, press and hold \curvearrowright to display the Home menu.
2. Then press + or – and \llcorner or \lrcorner to select **Voice Memo**, and press \triangleright to enter the **Voice Memo** menu.



3. Press \lrcorner or \triangleright to highlight **Start Recording** and press \lrcorner or \triangleright to start recording.
 - Press \triangleright to pause or resume recording.
 - The microphone is located at the back of the player.
4. Press \square and then select **Stop Recording** by pressing \triangleright .
 - The player names each recording *VRecXXX.wav* where XXX is a unique number.

To record for a specific duration:

Refer to *RecDur* on page 29.

Playing back voice memo

To play back a recording:

1. In other modes, press and hold \curvearrowright to display the Home menu.
2. Then press + or – and \llcorner or \lrcorner to select **Voice Memo**, and press \triangleright to enter the **Voice Memo** menu.
3. Press + or – to highlight **Playback** and press \lrcorner or \triangleright .
4. Press + or – to select a recording and press \lrcorner or \triangleright to start playback.

Copying recordings to your PC

Recordings are stored as WAV files in the "Recordings\VoiceRecord" folder on the player.

To copy recordings to the PC:

1. Plug the player into the PC.
2. Open the player's Record folder.
3. Select the files you want to copy and drag and drop them onto a folder on the PC.
 - Almost all audio applications can play WAV files.

Settings

Changing the player's settings

To change the player settings:

1. In other modes, press and hold \curvearrowright to display the Home menu.
2. Press + or – and \lll or \ggg to select **Settings** and press \ggg to enter the settings menu.



3. Press + or – to select a setting and then press \ggg to change it.

Shuffle

- Press \ggg repeatedly to select shuffle on or off. Music files (mp3/wma/wav) will be played randomly when shuffle is activated.
- The shuffle icon (\curvearrowright) shows on display when shuffle is on.

Repeat

- Press \ggg repeatedly to select repeat current \mathbb{C} or all files \mathbb{C} (corresponding icon shows on the display).

Equalizer

- Press \ggg repeatedly to choose an equalizer setting (Flat, Bass, Pop, Rock and Jazz).

Setting Graphic mode:

- Press \ggg repeatedly until Graphic appears and then press \ggg . In graphic mode, you can customize the five band equalizer. Press \lll or \ggg to select a band and then press + or – to adjust the band level. When finished, press \curvearrowright to exit Graphic mode.

Customize menu

To select what you wish to display in the submenu of the Music menu: Titles, Artists, Album and Genres.

Slideshow

To select the slideshow image duration. Press \ggg repeatedly to select among: off, 3, 5, 10 and 15 seconds.

Brightness

To adjust the display light brightness.

Screensaver

To set the duration (10s, 20s, 30s and 1m) before the screensaver activates.

Power save

To set the time interval (Off, 1m, 2m, 5m and 10m) before the player turns off if no key is pressed.

RecDur (Record duration)

To change the duration (Max, 5 minutes, 30 minutes, 1 hour) for radio and voice memo recording.

FreqStep (Frequency Step)

To changes the way that the player scans through the radio frequencies. Switch to EU if you bring the player to Europe; switch back to US when you return to North America.

Language

To change the language of the player menus.

Protocol

To switch between MSC (Mass Storage Class) and MTP (Media Transfer Protocol) modes when connected to your PC. To enable function of transferring subscription music content, select MTP mode.

System info

To show the amount of free space available and the firmware version.

Restore defaults

To reset all menus to factory defaults.




Additional information

Tips and troubleshooting

Cannot delete files on the player.

- For any files you have transferred to the player, you may delete them while you have connected the player with your computer. Highlight the unwanted file in the player's file directory on your computer and press the delete key on your computer to delete the file. Subscribed files are best to be removed through Windows Media® Player.
- For deleting files from the player, refer to Option menu from page 17-27 for details.

Player repeats same tracks or all tracks.

- Repeat play is turned on. Press  during playback to show the Option menu and select Repeat Off. You can also press  to return to Home menu. Then select **Settings** and press  to enter the settings menu to select Repeat Off.

Audio distorted at high volume.

- Change the Equalizer mode to Flat.
- Turn down the volume.

The audio tracks on my player keep skipping or popping.

- You'll need to re-record the audio track – make sure you close all other applications on your PC when you record.
- Try recording with Error Correction setting turned on.

Player turns itself off.

- Your player turns itself off if you leave it in pause mode or navigation mode for the duration specified in PowerSave setting.

The player cannot be turned on.

- Battery is empty, please recharge.
- Ensure the keys lock is not activated.
- Reset the player by pressing the **RESET** button on the back of the player with a non-metal pointed object (e.g. toothpick)."
- If the player still cannot be turned on after resetting, perform a firmware upgrade to restore it.
- Please go to www.rcaaudiovideo.com for more details.

Player does not respond to key presses.

- Make sure the lock function is not activated.
- If the player stops operating properly, you can reset it by pressing the **RESET** button on the back of the player with a non-metal pointed object (e.g. toothpick).
- This player may temporarily cease to function if subjected to electrostatic disturbance. To resume normal operation, it may be necessary to cycle the power off and back on or you can reset it by pressing the **RESET** button on the back of the player with a non-metal pointed object (e.g. toothpick).

Player cannot play WMA songs.

- Secure music download files must be transferred to your player through the Windows Media Player or the application recommended by your online music download service (Note: Services and applications must be Windows Media audio-compliant and support Digital Rights Management.) (Apple iTunes music content is not supported).

The player takes a long time to read files in a folder.

- File reading may take longer if too many files are put in a single folder. Re-organize your files into a number of folders.

Song information is not showing correctly.

- Song information may not match your current player's language setting. Change the language setting.

Cannot view picture files.

- The player only supports .jpg extension file, and do not support other formats like .bmp, .tiff, .jpeg.

Cannot play video files.

- All video contents must be converted by RCA easyRip software which comes with the player. Other format of video file will not be supported.

Cannot play audible files.

- Make sure the file format is correct. The player supports Format 4 and AAX Audible file.

The player reports that it is full.

- You have filled the capacity of the internal memory of the player.
- You have exceeded the maximum number of items that this player supports. Your player can only support up to 2000 media files within eight hierarchy of folder in maximum.

Cannot playback tracks on the player.

- Make sure audio tracks are encoded in the mp3 or Windows Media formats at supported bitrates.
- Bitrates support by the player:
mp3 – 32 to 320 kbps
wma – 48 to 192 kbps
- WMA files may be DRM protected and you don't have the proper rights (license) to play the files.
- Check the website and/or application help system of the music download service provider from where the content was purchased from for license acquisition details. For more information on how license acquisition works, go to www.microsoft.com/windowsmedia/drm.

Cannot playback songs downloaded from my paid Music Server Provider subscription service.

- The internal clock in your portable player may not be up to date. Downloading a new subscription song from your Music Server Provider should update your player's clock and allow it to playback all your songs again.
- The license for your subscription songs may have expired. Synchronize your device with your PC again to obtain an update to your license. If the problem persists, please contact your Music Service Provider for additional support.

Cannot transfer subscription music content to the player.

- To enable function of transferring subscription music content, select *MTP* mode under *Protocol* in the *Settings* menu. Refer to page 29 for more information.

Voice recording stops automatically after 5 hours.

- Maximum duration for each recording is 5 hours. Start a new recording after the maximum duration has reached.

What is MTP mode?

- MTP (Media Transfer Protocol) mode is essential if you want to transfer DRM10 content to your player. In MTP mode your player will no longer show up as a drive letter. So programs that were designed to work with a player that shows up as a drive letter will not be able to work directly with the player.

Cannot launch RCA easyRip installer stored in the player to install easyRip on my PC.

- To enable function of launching RCA easyRip installer stored in the player, select *MSC* mode under *Protocol* in the *Settings* menu. Refer to page 29 for more information.

For your records

Keep your sales receipt for proof of purchase to obtain warranty parts and service. In the event that service should be required, you may need both the model number and the serial number. In the space below, record the date and place of purchase, and the serial number:

Model No.

Date of Purchase

Place of Purchase

Serial No.

Visiting RCA website

Please visit www.rcaaudiovideo.com for:

- Product registration
- Latest software and firmware
- Latest RCA easyRip software
- User manual
- Frequently asked questions (FAQ)
- Customer service and technical support information

Technical specification

Product: Digital Audio Player

Brand: RCA

Model: M4508, M4604, M4608 and M4616

Electrical Consumption: 3.7V Lithium battery (built-in)

Specifications

Hardware

- Dimensions: 93.6 mm H, 42.9 mm W, 9.6 mm D
- Unit Weight: 40 g
- Stereo Headphones jack
- USB Connection Jack
- Battery Operated: Rechargeable lithium battery.

USB Drive

- External USB Drive: When connected to a computer via USB, the player is capable of storing any file type allowing the user a fast, convenient method of storing, retrieving, and transferring files. This includes word processing files, presentations, spreadsheets and any other computer files.
- Capacity: 4GB (M4604), 8GB (M4508, M4608), 16GB (M4616)
- Connection: USB 2.0, Hi-speed capable

Software

- Includes the player applications and media management software.

Warranty information

Limited warranty

12 Month Limited Warranty

Applies to RCA Audio/Video Products

AUDIOVOX ELECTRONICS CORP. (the Company) warrants to the original retail purchaser of this product that should this product or any part thereof, under normal use and conditions, be proven defective in material or workmanship within 12 months from the date of original purchase, such defect(s) will be repaired or replaced with reconditioned product (at the Company's option) without charge for parts and repair labor.

To obtain repair or replacement within the terms of this Warranty, the product is to be delivered with proof of warranty coverage (e.g. dated bill of sale), specification of defect(s), transportation prepaid, to the Company at the address shown below.

This Warranty does not extend to the elimination of externally generated static or noise, to correction of antenna problems, loss/interruptions of broadcast or internet service, to costs incurred for installation, removal or reinstallation of product, to corruptions caused by computer viruses, spyware or other malware, to loss of media, files, data or content, or to damage to tapes, discs, removable memory devices or cards, speakers, accessories, computers, computer peripherals, other media players, home networks or vehicle electrical systems.

This Warranty does not apply to any product or part thereof which, in the opinion of the Company, has suffered or been damaged through alteration, improper installation, mishandling, misuse, neglect, accident, or by removal or defacement of the factory serial number/bar code label(s). THE EXTENT OF THE COMPANY'S LIABILITY UNDER THIS WARRANTY IS LIMITED TO THE REPAIR OR REPLACEMENT PROVIDED ABOVE AND, IN NO EVENT, SHALL THE COMPANY'S LIABILITY EXCEED THE PURCHASE PRICE PAID BY PURCHASER FOR THE PRODUCT.

This Warranty is in lieu of all other express warranties or liabilities. ANY IMPLIED WARRANTIES, INCLUDING ANY IMPLIED WARRANTY OF MERCHANTABILITY, SHALL BE LIMITED TO THE DURATION OF THIS WRITTEN WARRANTY. ANY ACTION FOR BREACH OF ANY WARRANTY HEREUNDER INCLUDING ANY IMPLIED WARRANTY OF MERCHANTABILITY MUST BE BROUGHT WITHIN A PERIOD OF 24 MONTHS FROM DATE OF ORIGINAL PURCHASE. IN NO CASE SHALL THE COMPANY BE LIABLE FOR ANY CONSEQUENTIAL OR INCIDENTAL DAMAGES FOR BREACH OF THIS OR ANY OTHER WARRANTY. No person or representative is authorized to assume for the Company any liability other than expressed herein in connection with the sale of this product.

Some states do not allow limitations on how long an implied warranty lasts or the exclusion or limitation of incidental or consequential damage so the above limitations or exclusions may not apply to you. This Warranty gives you specific legal rights and you may also have other rights which vary from state to state.

How to make a warranty claim:

- If your product is capable of storing content (such as an mp3 player, digital voice recorder, etc), it is recommended to make periodic backup copies of content stored on the product. If applicable, before shipping a product, make a back up copy of content or data stored on the device. Also, it is advisable to remove any personal content which you would not want exposed to others. IT IS LIKELY THAT CONTENTS AND DATA ON THE DEVICE WILL BE LOST DURING SERVICE AND REFORMATTING. AUDIOVOX ACCEPTS NO LIABILITY FOR LOST CONTENT OR DATA, OR FOR THE SECURITY OF ANY PERSONAL CONTENT OR DATA ON THE RETURNED DEVICE. Product will be returned with factory default settings, and without any pre-loaded content which may have been installed in the originally purchased products. Consumer will be responsible for reloading data and content. Consumer will be responsible to restore any personal preference settings.

- Properly pack your unit. Include any remotes, memory cards, cables, etc. which were originally provided with the product. However DO NOT return any removable batteries, even if batteries were included with the original purchase. We recommend using the original carton and packing materials.
- Include evidence of purchase date such as the bill of sale. Also print your name and address and a description of the defect. Send via standard UPS or its equivalent to:

Audiovox Electronics Corp.

Attn: Service Department.

150 Marcus Blvd.

Hauppauge N.Y. 11788

1-800-878-5779

- Insure your shipment for loss or damage. Audiovox accepts no liability in case of damage or loss en route to Audiovox.
- Pay any charges billed to you by the Exchange Center for service not covered by the warranty.
- A new or refurbished unit will be shipped to you freight prepaid.

What we will do:

Provide you with a new, or at our option, a refurbished unit. The exchange unit is under warranty for the remainder of the original product's warranty period.

For Canada Customers, please ship to:

Audiovox Return Centre

c/o Genco

6685 Kennedy Road,

Unit#3, Door 16,

Mississauga, Ontario

L5T 3A5

Illustrations contained within this publication are for representation only and subject to change.

The descriptions and characteristics given in this document are given as a general indication and not as a guarantee. In order to provide the highest quality product possible, we reserve the right to make any improvement or modification without prior notice.



Audiovox Electronics Corp.
150 Marcus Blvd., Hauppauge, NY 11788

© 2010 Audiovox Electronics Corp.
Trademark(s) ® Registered
Marca(s) ® Registrada(s)
Marque(s) ® Déposée(s)
www.rcaaudiovideo.com

v3.0 (1.0.3.0)