

ADVENT®

NM102

**Rearview Mirror with Built-In Navigation, Bluetooth,
and Touch Screen Controls**



- **Built-in iGO Primo™ navigation with 19 on-screen display languages**
- **US and Canada maps with 11 million POIs**
- **Text-to-Speech recorded voice guidance in English, French and Spanish**
- **Built-in Bluetooth® with Phone Book**
- **Internal Microphone, Speakers and GPS Antenna**
- **4.3" LED backlit digital monitor with touch screen**
- **Screen not visible with camera and navigation turned off**
- **Includes universal GM/Ford/Chrysler mounts**
- **Additional mounts available separately**



For Customer Service
Visit Our Website At

www.audiovox.com
Product Information, Photos,
FAQ's Owner's Manuals

2014 VOXX International Corp., 150 Marcus Blvd., Hauppauge, N.Y. 11788

Size: 140*215 mm

Material:

Front & Back cover: Both-side coated paper 157g

Others: Wood-free printed paper 80g

Front cover: color printing

Others: Black & White printing

Introduction

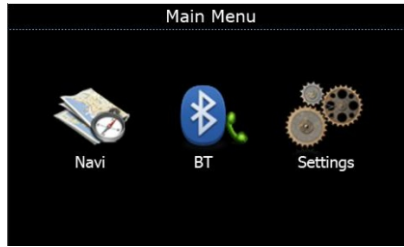
Controls



No.	Icon	Description
1		Volume down
2		Monitor Power on/off
3		Navigation / Safety mode (see instructions)
4		Home Menu
5		Enter or Exit Bluetooth interface
6		Volume up
7		Reset System Button
8	Screen	Displays the map and Backup camera (not included)

1. Volume Down: This adjusts the speaker volume for Navigation instructions as well as Bluetooth calls.
2. Power on and off: This allows you to shut the Navigation system off when you do not require its operation.
3. Navigation Safety Mode: This feature shuts off the monitor until your next turn or Navigation instruction needs to be displayed. The next turn will come up and then the screen will shut off unless your next instruction is less than one minute away.
4. Home Menu: This Button will take you to the main selection menu or toggle the screen off if you are in the main menu currently.
5. Bluetooth: This will take you directly to the Bluetooth Menu from any other screen to make or answer a call.
6. Volume Up: This adjusts the speaker volume for Navigation instructions as well as Bluetooth calls.
7. Reset: This will reset the Navigation system to its factory default settings.
8. Screen / Monitor: Your Navigation / Bluetooth / Back-up Camera will be displayed here. This is a capacitive touch screen (similar to most smart phones), it does not need to be pressed hard, and just a light touch will operate it. Do not tap on or poke the screen with your finger nail or other objects. It requires contact with your finger to operate. In cold weather it may require a longer touch. The screen will not respond when wearing gloves or if your fingers are covered.

Main Menu



GPS



Touch the GPS icon or press button the Navigation Key to Start or Enter the Navigation mode. Follow the instructions in the Navigation Manual for use of the iGo Primo Nav software.

NOTE: You must be in an open clear area for Navigation to operate, the vehicle cannot be in a garage, parking structure, or the view of the sky blocked for proper operation.

You Navigation software can be updated by following the procedures listed at the following website: www.naviextras.com. Support, updates, extras, and add-on's can be obtained at this web site. All Advent navigation devices come with a "latest map guarantee"; this means that when you purchase your navigation mirror you will have the latest available data. By following the instructions at naviextras.com you will have access to any updates available within 90 days of the starting use of your mirror. Updates after this point are available for purchase when they are made available by NavNGo Navigation. All mapping support is directly supported only by NavnGo at this website. Please refer to the navigation manual for more details.

BT - Bluetooth

Your NM102 is equipped with a Bluetooth-enabled hands free function to enable you to make and receive cellular phone calls in safety while driving. The process of creating a secure connection between your cellular phone and the mirror unit is called **pairing**. (**Note:** your cellular phone MUST have Bluetooth capability and have its Bluetooth function turned on in order to make a connection with the mirror unit. If you are not sure, please consult the manual that came with your phone.) Pairing is only required one time unless you delete the connection information from your Phone or Pair another device over the current device. You only can Pair to 1 Phone in the memory of the NM102, and you can only use one at a time. The Most recently paired phone will take priority.

Pairing Your Phone with the Mirror Unit

1. Please make sure that your phone is in "Discoverable Mode". Then you are ready to begin the pairing process.

Limited Warranty

Voxx Electronics Corporation ("the Company") is committed to quality and customer service, and are pleased to offer you this Warranty. Please read it thoroughly and contact the Company at 1-800-323-4815 with any questions.

Who is covered?

The Company extends this warranty to the original retail purchaser of products purchased through an authorized Voxx retailer in the U.S.A., Puerto Rico or Canada. This warranty is not transferable or assignable. Proof of purchase is required in the form of an original sales receipt.

What is covered?

The Company warrants that should this product or any part thereof, under normal use, be proven defective in material or workmanship within 36 months from the date of original purchase, such defect(s) will be repaired or replaced with a new or reconditioned product (at the Company's option) without charge for parts and repair labor.

What is not covered?

This Warranty does not cover the following:

- Damage incurred during shipping or transporting the product to the Company or a service center
- Elimination of car static or motor noise
- Defects in cosmetic, decorative or non-operative structural parts
- Correction of antenna problems
- Costs incurred for installation, removal or reinstallation of the product
- Consequential damage to compact discs, USB devices, digital media cards, accessories or vehicle electrical systems
- Damage caused by improper installation, mishandling, misuse, neglect, accident, blown fuse, battery leakage, theft or improper storage
- Products whose factory serial number/bar code label(s) or markings have been removed or defaced
- Damage resulting from moisture, humidity, excessive temperature, extreme environmental conditions or external natural causes

Please review the "Care and Maintenance" section of your Installation and Operation Manual for additional information regarding the proper use of your product.

DO NOT RETURN THIS PRODUCT TO THE STORE

Limitations

THE EXTENT OF THE COMPANY'S LIABILITY UNDER THIS WARRANTY IS LIMITED TO THE REPAIR OR REPLACEMENT PROVIDED ABOVE AND, IN NO EVENT, SHALL THE COMPANY'S LIABILITY EXCEED THE PURCHASE PRICE PAID BY PURCHASER FOR THE PRODUCT.

This Warranty is in lieu of all other express warranties or liabilities. ANY IMPLIED WARRANTIES, INCLUDING ANY IMPLIED WARRANTY OF MERCHANTABILITY, SHALL BE LIMITED TO THE DURATION OF THIS WRITTEN WARRANTY. ANY ACTION FOR BREACH OF ANY WARRANTY OF MERCHANTABILITY MUST BE BROUGHT WITHIN A PERIOD OF 36 MONTHS FROM DATE OF ORIGINAL PURCHASE. IN NO CASE SHALL THE COMPANY BE LIABLE FOR ANY CONSEQUENTIAL OR INCIDENTAL DAMAGES FOR BREACH OF THIS OR ANY OTHER WARRANTY, EXPRESS OR IMPLIED, WHATSOEVER. No person or representative is authorized to assume for the Company any liability other than expressed herein in connection with the sale of this product.

Some states do not allow limitations on how long an implied warranty lasts or the exclusion or limitation of incidental or consequential damage so the above limitations or exclusions may not apply to you. This Warranty gives you specific legal rights and you may also have other rights which vary from state to state.

Obtaining Warranty Service


- To obtain repair or replacement within the terms of this Warranty, call 1-800-323-4815 for the location of a warranty station serving your area.
- You must prepay the initial shipping charges to the Company. The Company will pay the return shipping charges for all warranted products returned to an address within the U.S.A., Puerto Rico or Canada.
- Please package the product securely to avoid shipping damage. We recommend using a carrier that provides tracking service to prevent lost packages. Lost or damaged packages are not covered by this warranty.
- Provide a detailed description of the problem(s) for which you require service.

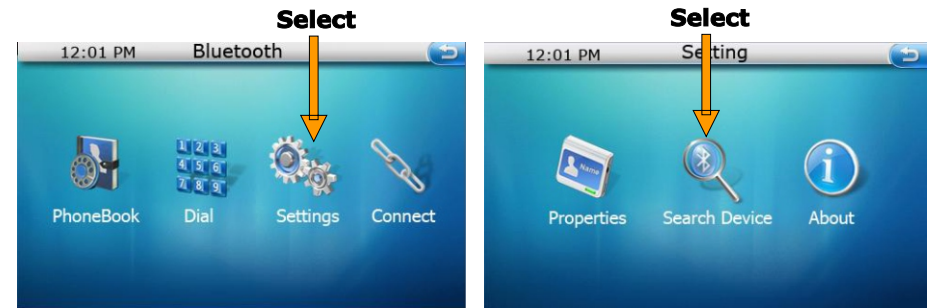
Disclaimer

The information in this user manual is for general guidance. Images in the manual may resemble but not exactly match the images that are displayed in the navigation software. Some features described in the manual may not be available or the features described may be limited, depending on the navigation software.

1.4 General specification

CPU		SirFatlasVI, 800MHz
Screen	Display	4.3 inch TFT
	Resolution	480*272
Memory	Flash ROM	8GB INAND Flash
	RAM	256M DDR2
GPS navigation module		High sensitivity receiver (CAN5115/QFN24)
Antenna		Built-in antenna (high sensitivity 64 channels GPS receiver)
Bluetooth		4.0
Input/Output	Touch Panel	Capacitive touch panel
	Speaker	Built-in speaker
	MIC	Internal Noise Cancelling
	SD/MMC	TF Slot, capacity up to 16GB (support TF HC)
	USB	USB 2.0(mini)

2. Press the Bluetooth  Button (located on the bottom of a mirror) to enter the Main Bluetooth Control screen. Next press the **'Settings'** icon. Then Press the **'Search Device'** icon on the Bluetooth settings menu.




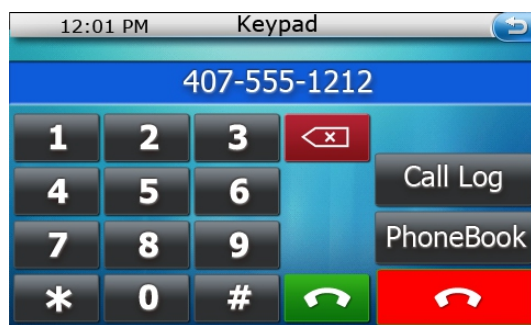
3. After the **'Search Device'** process completes, you will then see a list of devices that are ready to be connected. Choose the one you would like to connect by touching it on the screen, and then touch the **'LINK'** icon on the right side of the screen next to the phone you have chosen. If your phone is the last connected device, and you just disconnected it by clicking the **"DISCONN"** icon, you do not need to search for it again. The Bluetooth system will remember the last phone it was connected too, you just need to click **"Connect"** icon on the Bluetooth menu.
4. When Pairing the screen may show **'Connection Failed'**, this is because the Bluetooth module may try to connect to the previously connected device (Auto-Reconnect Feature) or due to other devices or interference in the area. If this happens touch the **'LINK'** icon and the new device will be connected. If your Phone did not show up in the list, insure that it is in discovery mode, bluetooth is powered on, one and press the refresh button. Your phones owners manual will explain these features.
5. If searching from your phone Select **'Advent NM102'** on your phone. When your phone asks you to enter the pairing code for the mirror enter 1234. Once the code is entered, your phone should indicate the pairing process is successful.
6. Depending on the model of your phone, it may offer you the option of connecting to the mirror whenever the mirror is on and in range (approximately 10 feet) of your phone. If you do not select this feature, you will need to manually connect your phone to the mirrors Bluetooth each time either by using your phone's menu to select and connect, or by using the **'Paired Devices'** selection in the mirror unit's Bluetooth menu.
7. Note: If your phone does not locate the mirror unit, repeat the pairing procedure, ensuring that you are within acceptable range and completing the process within the 60-second period. If the pairing code is incorrect, check to ensure that the code has not been changed on the mirror (see **'Properties'** in the Settings menu for changing the **"Pairing PIN Code."**)

8. If you're still having difficulties pairing please refer to your phones owner's manual or call your cell service providers technical support number.

Making Calls Using Bluetooth

You can initiate calls four ways:

1. **Use your handset to initiate a call.** Your phone will automatically use the microphone and playback capability of the mirror unit.
2. **Use the Key Pad on the mirror unit to initiate a call.** Press the Bluetooth hard key  button. From the Bluetooth menu, press the 'Dial' icon. You can then either use the Keypad to directly dial a number. Press the 'Phone' icon to start your call.
3. **Use the Call Log on the mirror unit to initiate a call.** From the Bluetooth menu, press the 'Dial' icon, then press the 'Call Log' icon to view a list of previously called, received and missed numbers. Select the number you want and press the 'Phone' icon to initiate a call. Call Log button to show call history & memory dial



Call Log button to show call history & memory dial

Phonebook button for select phones

Hang up to end calls

Dial button after entering your number


Receiving and Ending Calls



When you receive a call via Bluetooth, you will see a pop-up graphic on the screen, accompanied by the number of the calling party (if Caller ID is enabled).

Factory reset This will reset the mirror to all factory settings. This will delete all data, phone numbers, and settings from the mirror. Use only when a full reset is required.

2.1 Standby and screen timeout

In order not to influence the driver's rear-view judgment during traveling, you can switch to screen standby and timeout mode manually.

- ① If you don't operate the device after some time, it will automatically switch to the standby mode. And if you touch the screen, it will switch to the system interface.
- ② During navigation with map displayed on the screen, if you press the navigation button , it will turn to the safety navigation mode and the screen will only come on and show the screen image when a turn or change in direction is coming up. Press the navigation button again to display the map with the current road information on the screen.

- ③ Press the home button  and it will go to the main menu interface. Press the home button  again and the screen will shut off. If you want to use the navigation again, just press the home button again to wake up the screen

2.2 Reverse camera

If you have a reverse camera connected to the mirror:

- ① When you switch to reverse gear, the screen will show the rear camera.
- ② When you switch to Park, neutral, or forward gear, the camera will shut off and the mirror will return to normal operation.

4. Maintaining Your NM102

1. Use a soft, dry cloth to wipe away dirt.
2. If the dirt cannot be wiped away, dampen the cloth with water to clean the unit.
NOTE: Do not soak the screen with any product or water as it is not water proof.
3. Use a dry cloth to wipe away residual moisture when done.
NOTE: Do not use solvent, car cleaner or organic cleaners to clean the unit. These substances may damage the GPS unit.

Cleaning the LCD Display:

1. Turn off the system while cleaning the display to prevent static electricity.
2. Use a soft, dry cloth to wipe away dirt.
3. The display surface is easily scratched. Use only soft cloths designed for screens to clean the glass.

Camera Settings

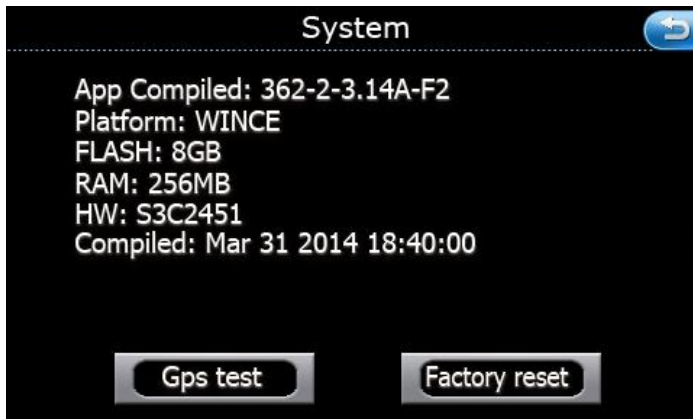
Touch  to enter the Camera Setting interface.




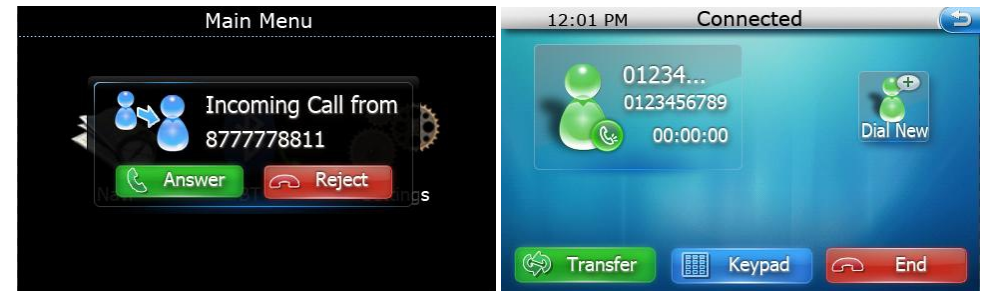
Choose the image mode you want.

System




Touch  to enter the system information interface.




 GPS test will identify how many satellites are being received. Note the antenna is located in the mirror housing. Do not place any object over the mirror housing or on the windshield above the mirror or this will block the signal.



Press   (located on the mirror control buttons) to control the volume.

- Touch  to transfer the call between the mirror and phone for privacy.
- Touch  to input numbers or dial extension numbers.
- Touch  to end the call.

Viewing or Changing the Pairing Code

1. Press 'Setting' from the Bluetooth menu. Then press 'Properties'. In the 'PIN Code' field is the current pairing code.
2. To change it, press the 'PIN Code' field then a keypad will show. Enter a new code.
3. Press the ENTER key  to complete your change.

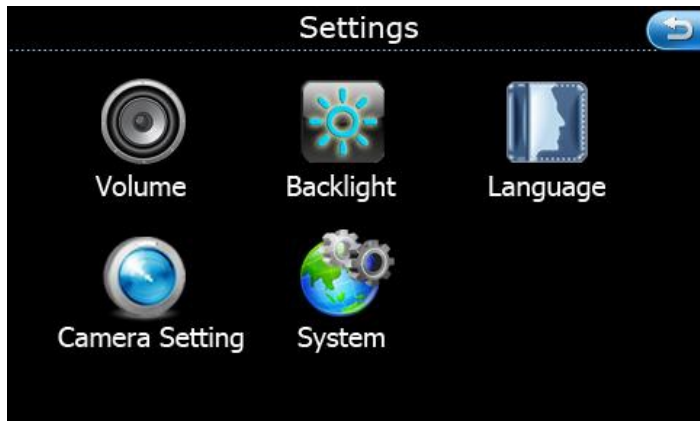
To Connect to Other Phones

- **To see which phones are paired with your mirror unit**, you will see the connected phone's 'NAME' appeared on the top of Bluetooth Main Menu.
- **Press 'DISCONN' to disconnect from the currently connected phone.** Then go through the 'Pairing' process from the beginning.

Note: If you disconnect a paired phone and pair another phone, you will need to re-pair the previous phone if you intend to use it with the NM102

Settings

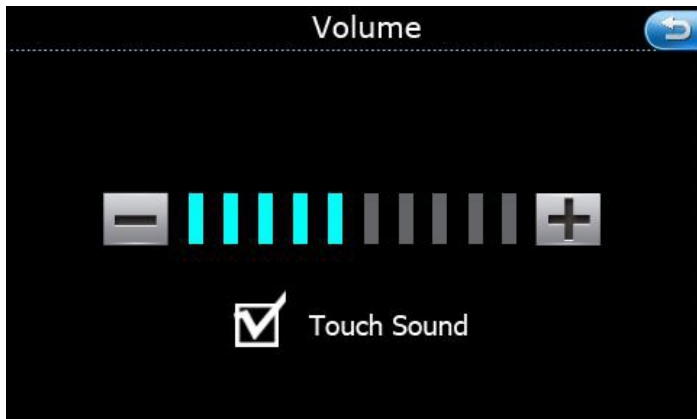
Touch  icon at the main menu to enter setting interface.




Volume

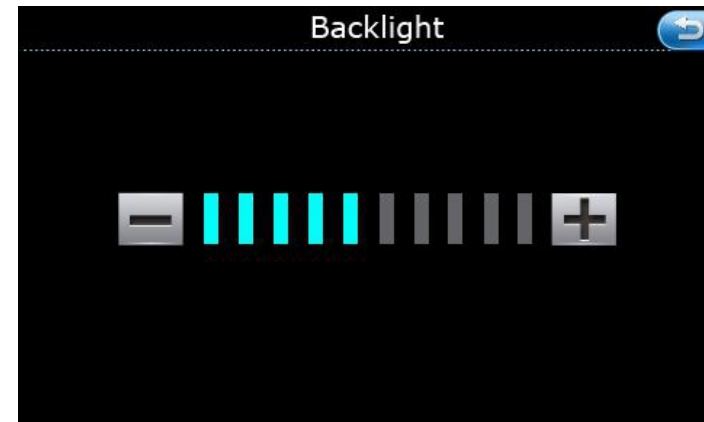
Touch "" to enter the volume setting interface. You can select to set the volume.

"Tap Sound" Selected will activate a confirmation tone each time you touch the screen. If not selected there will be no confirmation tone.



Backlight

Touch "" to enter the backlight setting menu.



Click   to adjust brightness

NOTE: Due to the mirror finish in some cases the screen may not be easily seen when in direct sunlight. This is normal and a characteristic of TFT screens.

Language

Touch "" to enter the language setting menu.



Choose the language you want, and then touch  to save the language setting.