

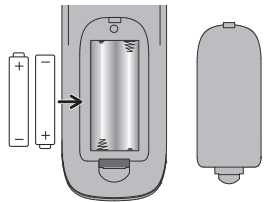
RCRPS06GR

# Quick Start Guide

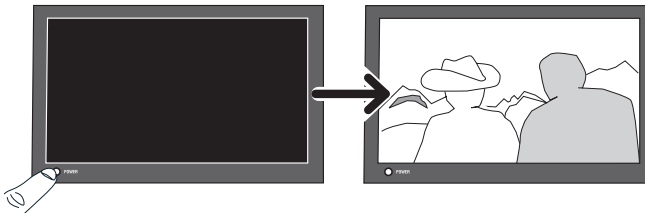


## Programming the Remote

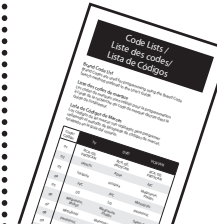
**1** Remove the battery compartment cover, insert 2 AAA batteries (not included), and replace the cover.



**2** Manually turn on the device you want to control.

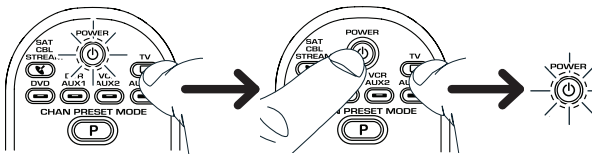


**3** Find the device's brand in the Brand Code List. Circle it and keep the list handy.

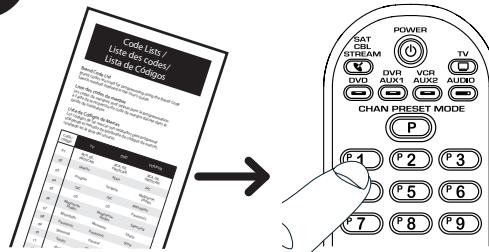


**Note:** If your brand isn't in this list, see the Owner's Manual for other ways to program.

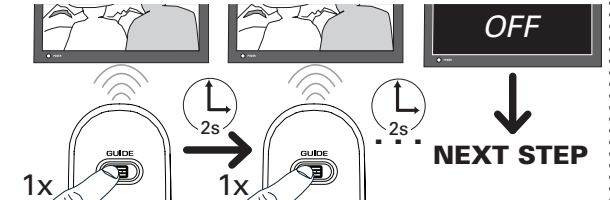
**4** Press and hold the device key. Then press the POWER key at the same time. Wait until the POWER key illuminates, then release both keys.



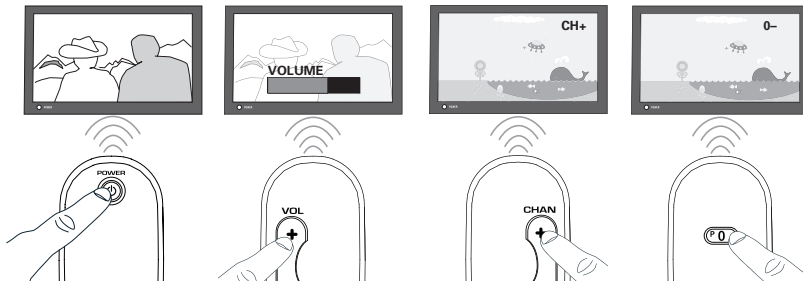
**5** Enter the numbers for your brand from the Brand Code List.



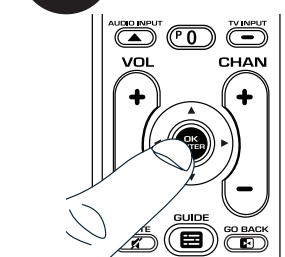
**6** Point the remote directly at your component and press GUIDE. If your device turns off, go to the next step. If not, repeat this one.



**7** Test all of the following keys that have a function with this component: POWER, VOL+, CHAN+, 0, PLAY, and STOP.



**8** If these keys work, press OK•ENTER to store the code.



To program the other device keys, follow these instructions again.

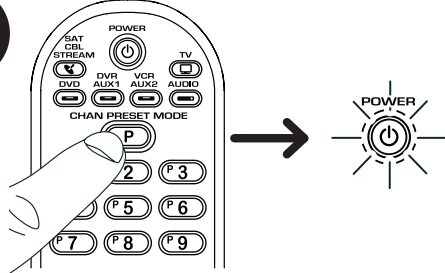
# Programming Your Preset Channels

**1** You can program up to 10 of your favorite channels on both of your components for instant access using the Channel Preset keys. First, put info for your favorite channels in the following tables.

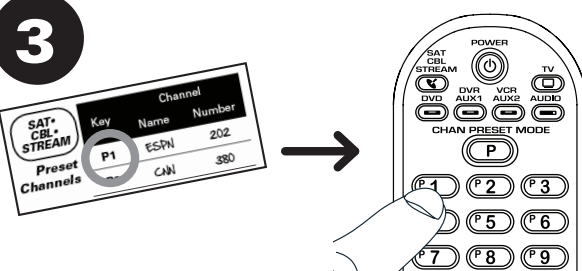
TV Preset Channels	Key	Channel	
		Name	Number
	P1		
	P2		
	P3		
	P4		
	P5		
	P6		
	P7		
	P8		
	P9		
	P0		

SAT•CBL•STREAM Preset Channels	Key	Channel	
		Name	Number
	P1		
	P2		
	P3		
	P4		
	P5		
	P6		
	P7		
	P8		
	P9		
	P0		

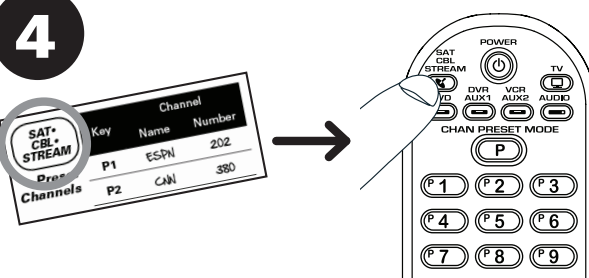
**2** Press and hold the P key. The POWER key illuminates. Keep holding the P key down until the POWER key blinks once and stays on. Then release it.



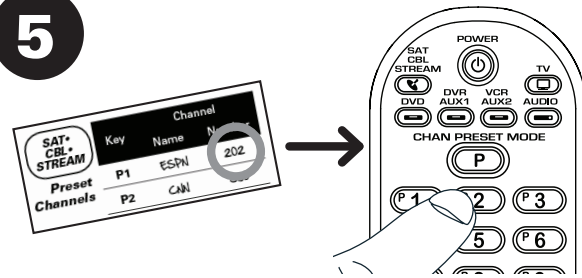
**3** Press the P1 key to program your first preset channel.



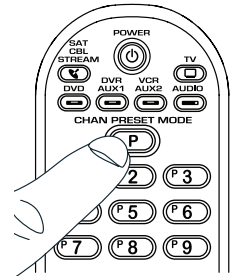
**4** Press the device key for this preset channels list.



**5** Enter the channel number for your first preset channel from the table you filled out in step 1.



**6** When you've finished entering the channel number, press the P key to save it.

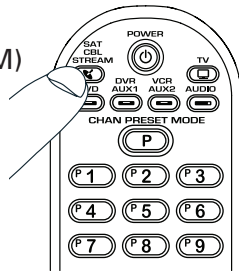


**To program more presets:**  
Repeat steps 2–6 for the next channel in your list.

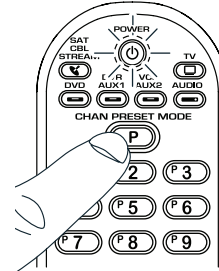
**To start using your presets:**  
See Accessing Your Preset Channels below.

## Accessing Your Preset Channels

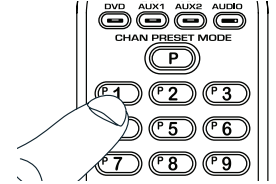
- 1 Press the device key (TV or SAT•CBL•STREAM) for the preset channel.



- 2 Press the P key. The POWER key lights up and stays lit.



- 3 Press the number for the preset you want to access.



While POWER is lit, just press the number to go to a preset.

**See the Owner's Manual for more info and troubleshooting.  
For additional support, call 1-800-420-7968 or visit [RCAAudioVideo.com](http://RCAAudioVideo.com)**