

1 PACKAGE

The RVM200 box contains the following accessories.

- Rear-view mirror monitor
- Wire harness
- User's manual
- Wire cover
- Remote control
- 2 Additional Mirror mounting adapters

2 FEATURES

- 4.3" High Brightness Back up camera display
- Automatic Monitor Brightness adjustment
- 4.0mm glass and 3 OEM style mounting brackets
- Adjustable Back up guide lines
- Dual Video Inputs

3 SPECIFICATIONS

- Screen Size: 4.3 inch
- Display Screen Type: TFT-LCD
- Resolution : 4 80(H) X 272(V) (4.3inch)
- Brightness: 1000cd/m
- Working Voltage: DC 12V
- Signal System: PAL / Auto / NSTC

4 REMOVAL/INSTALLATION

Remove the original mirror

CAUTION: DO NOT USE EXCESSIVE FORCE WHEN REMOVING MIRROR FROM THE WINDSHIELD MOUNT. THE WINDSHIELD BUTTON MAY SEPARATE FROM THE WINDSHIELD OR THE WINDSHIELD MAY BREAK IF FORCED.

NOTE: There are several versions of mirror maunt systems. If unfamiliar with mirror removal, seek professional assistance.

Screw mount mirror removal.

- Using a Phillips screwdriver or #20 torx bit, loosen the screw in the base of the mirror.
- After loosening screw, gently lift upward to slide mirror off of mirror mount.

Wedge mount mirror removal procedure: (Common for screw less mount)

- Using a mirror tool or small 1/8" (4 mm) flat-blade screwdriver, insert the flat end into the opening at the bottom of the mirror mount at the windshield.
- Slide the screwdriver into the center of the mirror mount until resistance is felt.
- Gently apply a small amount of additional upward force to lift away locking spring in the mount.
- While still applying upward pressure with the screwdriver, grasp the mirror bracket and wiggle side to side. Lift mirror up toward the headliner and off the windshield mount button.

Cam-lock Mirror Removal procedure: (Common Method)

- Grasp the base of the mirror.
- Rotate 90 degrees left or right.
- Slide mirror downward toward dash to remove.

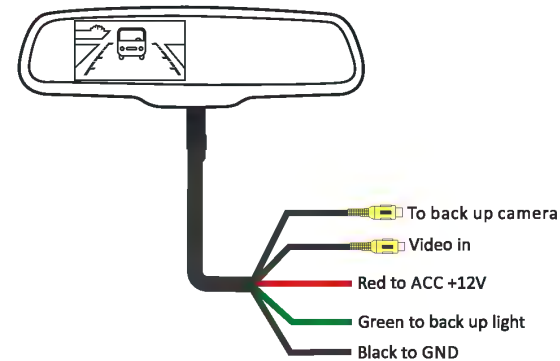
Mirror Installation:

Installation will vary depending on the mounting foot you use for the vehicle. The mount pre-installed on the mirror is for a standard wedge mount foot. If you need to use a different foot, change the foot by removing the Phillips head screw in the center of the foot. Attach the required foot to the mounting arm with the included screw.

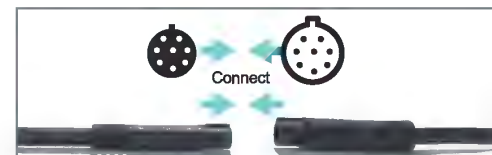
Install the mirror by reversing the removal process.

NOTE: Always use caution, DO NOT force the mount. VOXX will not be responsible for broken windshields. If you are not sure how to remove or re-install the mirror seek trained, qualified help.

5 WIRING



CAUTION: USE CARE WHEN ALIGNING THE CONNECTORS TO EACH OTHER. MISALIGNMENT CAN DAMAGE THE PINS AND RESULT IN POOR OR NO OPERATION. DAMAGE IS NOT COVERED BY WARRANTY.



A fuse is located in the power filter box. Only replace with a 2 Amp fuse if needed.

6 BACK-UP CAMERA DISPLAY

When the car is in reverse, the monitor will automatically display the connected backup camera.



The Green standby indicator will always be on when the unit is powered and ready to display the camera or video input. When the monitor is displaying an image the indicator will be off.

7 AUTOMATIC BRIGHTNESS ADJUSTMENT



In dark environments or at night the screen will automatically reduce the brightness for better viewing. The brightness level can be adjusted in the settings.

In bright environments or during the day the screen will automatically increase the brightness for better viewing. The brightness level can be adjusted in the settings.

The Monitor automatically detects the light level with the photo sensor on the left side of the control button. Do not block this sensor or this function will not work correctly.

8 VIDEO INPUT SELECTION / BRIGHTNESS



NOTE: If no source is connected to the second input the switch will have no function. If you place the car in reverse while the 2nd video display is selected the monitor will still automatically switch to the reverse camera for the drivers safety.

When a second camera or other video source is connected to the RVM200 Video Input you can select this input by quickly pressing the button one time. To turn off the display quickly press the button one more time. Pressing the input button while the vehicle is in Reverse will adjust the screen brightness, press quickly to change the setting once the brightness bar is displayed.

9 REMOTE CONTROL / SETTINGS

The settings menu allows you to adjust the following:

Picture:

- Brightness – Adjust the daytime screen brightness level
- Contrast – Adjust the screen contrast
- Color – Adjust the screen color
- Night Brighten – Adjust the night time screen brightness level

System:

- Scale – Turns Guidelines On/Off
- Language – Select the Menu language
- Preset – Off/On – On Selects the factory setting for the guidelines.

To enter the Settings Menu first engage the parking brake and have your foot firmly on the brake pedal while making adjustments.

NOTE: If the remote does not operate make sure the battery activation strip has been removed.

Using the remote control press "MENU" to enter the "PICTURE" menu. Note: The screen will be blank unless you place the vehicle into reverse or have a second video source connected and selected at that time.

Press "SEL/REC" to select the option you would like to adjust. Press repeatedly to scroll through the options.

To adjust the selected setting value press "UP" or "DOWN" buttons.

Press "MENU" again to change to the "SYSTEM" settings screen. Repeat the above instructions to select an option.

Press "MENU" one more time to exit the settings mode.

10 ADJUSTABLE GUIDELINES

The RVM200 is equipped with adjustable guide lines that should be set correctly at the time of installation. Generally these guidelines are used to help drivers estimate the distance from obstacles when parking. There are three lines for reference - Red, Yellow and Green. These three lines are displayed on the monitor when car is in reverse. The lines should be adjusted so the green line starts approximately 9ft away from the rear of car, the yellow line starts approximately 6ft away from the rear of car, and the red line starts approximately 3ft away from the rear of car. The lines should also be adjusted to be approximately 6 inches wider than the vehicle on each side to assist in parking.

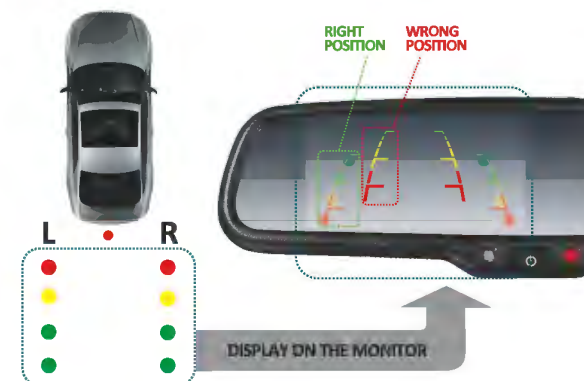
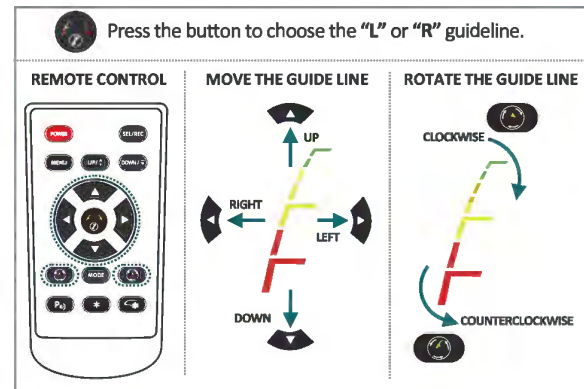
11 ADJUSTING THE GUIDELINES

Adjusting the guidelines:

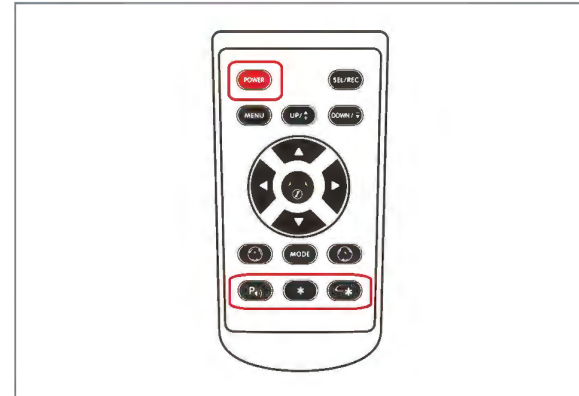
By placing items behind the vehicle at the measurements shown above you will be able to easily and quickly customize the parking lines for this particular vehicle.

Once you have either marked the area or place items such as traffic cone behind the vehicle make sure the parking brake is engaged and no one is behind the vehicle.

- Place the vehicle into reverse gear and press the guideline adjustment key in the center of the 4 directional keys on the remote control.
- A series of position numbers will appear at the top of the screen. The system will always select the left line first. (XL)
- Press the button again to select the right guide line (XR).
- Use the up down left and right buttons to adjust the location of the selected guideline.
- To adjust the angle of the guidelines press the rotation keys below the 4 position keys to rotate the lines clockwise and counter clockwise.
- When you are finished place the vehicle in Park, the monitor will shut off and the positions will be saved in the RVM200's memory.



12 REMOTE CONTROL - OTHER FUNCTIONS



The keys outlined in red have no function and will not operate with the RVM200. This is normal operation and these are reserved for future use.

13 WARRANTY

DO NOT RETURN THIS PRODUCT TO THE STORE

Voxx Electronics Corporation ("the company") is committed to quality and customer service, and are pleased to offer you this warranty. Please read it through and contact the Company at 1-800-323-4815 with any questions.

Who is covered?

The Company extends this warranty to the original retail purchaser of products purchased through an authorized Voxx retailer in the U.S.A., Puerto Rico or Canada. This warranty is not transferable or assignable. Proof of purchase is required in the form of an original sales receipt.

What is covered?

The Company warrants that should this products or any part thereof, under normal use, be proven defective in material or workmanship with 36 months from the date of original purchase, such defect(s) will be repaired with a new or reconditioned product (at the Company's option) without charge for parts or repair labor.

What is not covered?

This warranty does not cover the following:

- Damage incurred during shipping or transporting the product to the company or service center.
- Elimination of car static or motor noise.
- Defects in cosmetic, decorative or non-operative Structural parts.

- Costs incurred for installation, removal or re-installation of the product or consequential damage to accessories or vehicle electrical systems.
- Damage caused by improper installation, mishandling, misuse, neglect, accident, blown fuse, battery leakage, theft or improper storage.
- Products whose factory serial number/bar code label(s) or markings have been removed or defaced.
- Damage resulting from moisture, humidity, excessive temperature, extreme environmental conditions or external natural causes.

Limitations

THE EXTENT OF THE COMPANY'S LIABILITY UNDER THIS WARRANTY IS LIMITED TO THE REPAIR OR REPLACEMENT PROVIDED ABOVE AND IN NO EVENT SHALL THE COMPANY'S LIABILITY EXCEED THE PURCHASE PRICE PAID BY THE PURCHASER FOR THE PRODUCT.

THIS WARRANTY IS IN LIEU OF ALL OTHER EXPRESS WARRANTIES OR LIABILITIES. ANY IMPLIED WARRANTIES, INCLUDING ANY IMPLIED WARRANTY OF MERCHANTABILITY, SHALL BE LIMITED TO THE DURATION OF THIS WRITTEN WARRANTY. ANY ACTION FOR BREACH OF ANY WARRANTY HERE UNDER INCLUDING ANY IMPLIED WARRANTY OF MERCHANTABILITY MUST BE BROUGHT WITHIN A PERIOD OF 36 MONTHS FROM DATE OF ORIGINAL PURCHASE. IN NO CASE SHALL THE COMPANY BE LIABLE FOR ANY CONSEQUENTIAL OR INCIDENTAL DAMAGES FOR BREACH OF THIS OR ANY OTHER WARRANTY, EXPRESS OR IMPLIED WHATSOEVER. NO PERSON OR REPRESENTATIVE IS AUTHORIZED TO ASSUME FOR THE COMPANY AND LIABILITY OTHER THAN EXPRESSED HERE IN CONNECTION WITH THE SALE OF THIS PRODUCT.

Some states do not allow limitations on how long an implied warranty lasts or the exclusion or limitation of incidental or consequential damage so the above limitations or exclusions may not apply to you. This warranty gives you specific legal rights and you may also have other rights which vary from state to state.

Obtaining Warranty Service

To obtain repair or replacement within the terms of this warranty, call 1-800-323-4815 for the location of a warranty station serving in your area.

You must prepay the initial shipping charges to the Company. The Company will pay the return shipping charges for all warranted products returned to an address within the U.S.A., Puerto Rico or Canada.

Please package the product securely to avoid shipping damage. We recommend using a carrier that provides tracking service to prevent lost packages. Lost or damaged packages are not covered by this warranty. Provide a detailed description of the problem(s) for which you require service.



ADVENT®

RVM200 ULTRA HIGH BRIGHTNESS MIRROR MONITOR

Install / User Manual

ECE Approval No.: E90 46R-04 0019
ECE Approval No.: E13 10R-03 12762

