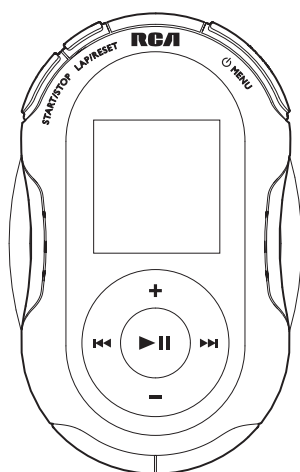


S2202

S2204

SC2202

SC2204



It is important to read this instruction book prior to using your new product for the first time.

Contents

Safety information

FCC information	3
Manufacturer/Responsible Party.....	3
Product registration	3
For your records	3
Important battery information	4
Electrostatic disturbance.....	4
Headset safety	4
IMPORTANT SAFETY INFORMATION.....	5

End user license agreement

End user license agreement.....	6
---------------------------------	---

Before you begin

Copyright warning.....	8
Back up your data	8
Unpacking your player.....	8
Computer system requirements.....	8
Secure music transfer requirements	8
Getting the latest software, firmware and information....	8
Frequently asked questions	8
Using the armband.....	9
Connecting to the computer.....	9
Charging the player.....	9

Managing files on your RCA Player

Using RCA EasyRip.....	10
Using Windows Explorer.....	12
Deleting files from the player.....	12
Disconnecting the player from the PC.....	12

General controls

Turning the player on and off.....	13
Locking the player controls.....	13
Resetting the player	13

Using the menus

Menu types.....	14
Menu navigation	14
The Home menu.....	15

Music

Playing music files.....	16
Music playback controls	16
Music playback display	16

Pictures

Playing picture files	17
Picture viewing controls.....	17

Videos

Playing video files	18
Video viewing controls.....	18

Radio

Playing FM radio	19
Storing and recalling preset stations.....	19
Recording FM radio	20
Improving FM radio sound	20
Playing back FM radio recordings.....	21
Copying recordings to your PC	21

Audiobooks

Playing audiobooks.....	22
Audiobook playback controls.....	22
Skipping through audiobook sections	22

Favorites

Creating a "Favorites" playlist	23
Removing files from "Favorites" playlist	23

Fitness

Stopwatch.....	24
Fitness mode.....	25
Pedometer	25
Personal info	26
BMI (Body Mass Index)	26

Settings

Changing the player's settings.....	27
Shuffle	27
Equalizer	27
Customize	27
Slideshow	27
Brightness	27
Screensaver	27
Power save	27
RecDur (Record duration)	28
FreqStep (Frequency Step)	28
Language	28
Unit.....	28
Protocol.....	28
Flip display.....	28
System info	28
Date and time.....	28
Restore defaults	28

Additional information

Tips and troubleshooting.....	29
Check for updates	30
Specifications.....	30

Limited warranty

For US	31
For Canada.....	32

Safety information

FCC information

This device complies with part 15 of the FCC rules. Operation is subject to the following two conditions: (1) This device may not cause harmful interference, and (2) This device must accept any interference received including interference which may cause undesired operation.



This equipment has been tested and found to comply with the limits for a Class B digital device, pursuant to Part 15 of the FCC Rules. These limits are designed to provide reasonable protection against harmful interference in a residential installation. This equipment generates, uses and can radiate radio frequency energy and, if not installed and used in accordance with the instructions, may cause harmful interference to radio communications. However, there is no guarantee that interference will not occur in a particular installation.

If this equipment does cause harmful interference to radio or television reception, which can be determined by turning the equipment off and on, the user is encouraged to try to correct the interference by one or more of the following measures:

- Reorient or relocate the receiving antenna.
- Increase the separation between the equipment and receiver.
- Connect the equipment into an outlet on a circuit different from that to which the receiver is connected.
- Consult the dealer or an experienced radio / TV technician for help.

In accordance with FCC requirements, changes or modifications not expressly approved by manufacturer could void the user's authority to operate this product.

This Class B digital apparatus complies with Canadian ICES-003.
Cet appareil numérique de la class B est conforme à la norme du NMB-003 du Canada.

 <p>THE LIGHTNING FLASH AND ARROWHEAD WITHIN THE TRIANGLE IS A WARNING SIGN ALERTING YOU OF "DANGEROUS VOLTAGE" INSIDE THE PRODUCT.</p>	CAUTION RISK OF ELECTRIC SHOCK DO NOT OPEN <p>CAUTION: TO REDUCE THE RISK OF ELECTRIC SHOCK, DO NOT REMOVE COVER (OR BACK). NO USER-SERVICEABLE PARTS INSIDE. REFER SERVICING TO QUALIFIED SERVICE PERSONNEL.</p>	 <p>THE EXCLAMATION POINT WITHIN THE TRIANGLE IS A WARNING SIGN ALERTING YOU OF IMPORTANT INSTRUCTIONS ACCOMPANYING THE PRODUCT.</p>
SEE MARKING ON BOTTOM / BACK OF PRODUCT		

WARNING: TO PREVENT FIRE OR ELECTRICAL SHOCK HAZARD, DO NOT EXPOSE THIS PRODUCT TO RAIN OR MOISTURE.

Manufacturer/Responsible Party

Audiovox Electronics Corp,
150 Marcus Blvd, Hauppauge, NY 11788
1-800-878-5779

Product registration

Please fill out the product registration card and return it immediately. Returning this card allows us to contact you if needed. You can go to www.rcaaudiovideo.com for online registration as well.

For your records

Keep your sales receipt for proof of purchase to obtain warranty parts and service. In the event that service should be required, you may need both the model number and the serial number. In the space below, record the date and place of purchase, and the serial number:
Model No.
Date of Purchase
Place of Purchase
Serial No.

	RCA S2202
---	--------------

	RCA S2204
---	--------------

	RCA SC2202
---	---------------

	RCA SC2204
---	---------------

Safety information

Important battery information

Warning: Your product contains a battery and charging system which is designed to work in temperatures that do not exceed 50°C (122°F). Leaving this product in a closed automobile or the trunk of an automobile where temperatures may exceed 50°C may result in permanent battery damage, fire, or explosion. Please remove your product from the automobile when you exit, do not place your product in the trunk of your automobile, and do not leave your product in any location where temperatures may exceed 50°C.

Important Battery Precautions

- Any battery may present a risk of fire, explosion, or chemical burn if abused. Do not try to charge a battery that is not intended to be recharged, do not incinerate, and do not puncture.
- Non-rechargeable batteries, such as alkaline batteries, may leak if left in your product for a long period of time. Remove the batteries from the product if you are not going to use it for a month or more.
- If your product uses more than one battery, do not mix types and make sure they are inserted correctly. Mixing types or inserting incorrectly may cause them to leak.
- Discard any leaky or deformed battery immediately. They may cause skin burns or other personal injury.
- Please help to protect the environment by recycling or disposing of batteries according to federal, state, and local regulations.

To minimize the risk of fire, explosion, or chemical burn, observe the following precautions:

- Do not use an unauthorized battery. Use only the rechargeable battery that came with your product or that is listed in the user's guide.
- Do not use unauthorized chargers or power adapters. Use only chargers that came with your product or that is listed in the user's guide.
- Do not attempt to open the rechargeable battery or battery pack. There are no user serviceable parts inside.
- Do not leave in a hot automobile or in temperatures exceeding 50°C (122°F).

Caution: Danger of explosion if battery is incorrectly replaced. Replace only with the same or equivalent type.

Electrostatic disturbance

This unit may temporarily cease to function if subjected to electrostatic disturbance. To resume normal operation, you may reset it by pressing and holding **⏻/MENU** for about ten seconds.

Precautions for the player

- Do not use the unit immediately after transportation from a cold place to a warm place; condensation problems may result.
- Avoid shock to the unit.
- Do not store the unit near fire, places with high temperature or in direct sunlight. Exposure to direct sunlight or extreme heat (such as inside a parked car) may cause damage or malfunction.
- Do not expose to rain or moisture.
- Do not operate or store unit in places with frequent static electricity or electrical noise (e.g. speaker, TV set).
- Clean the unit with a soft cloth or a damp chamois leather. Never use solvents.
- The unit must only be opened by qualified personnel.

Headset safety

To use a headset safely, please keep the following in mind:

- Do not play your headset at a high volume. Hearing experts advise against continuous extended play.
- If you experience ringing in your ears, turn down the volume or stop using the headset.
- Do not use a headset while driving a motorized vehicle or riding a bike. It may cause a traffic hazard and is illegal in many areas.
- Even if your headset is an open-air type designed to let you hear outside sounds, don't turn up the volume so high that can't hear sounds around you.

Safety information

IMPORTANT SAFETY INFORMATION

PLEASE READ AND SAVE FOR FUTURE REFERENCE

Some of the following information may not apply to your particular product; however, as with any electronic product, precautions should be observed during handling and use.

- Read these instructions.
- Keep these instructions.
- Heed all warnings.
- Follow all instructions.
- Do not use this apparatus near water.
- Clean only with dry cloth.
- Do not block any ventilation openings. Install in accordance with the manufacturer's instructions.
- Do not install near any heat sources such as radiators, heat registers, stoves, or other apparatus (including amplifiers) that produce heat.
- Do not defeat the safety purpose of the polarized or grounding-type plug. A polarized plug has two blades with one wider than the other. A grounding type plug has two blades and a third grounding prong. The wide blade or the third prong is provided for your safety. If the provided plug does not fit into your outlet, consult an electrician for replacement of the obsolete outlet.
- Protect the power cord from being walked on or pinched particularly at plugs, convenience receptacles, and the point where they exit from the apparatus.
- Only use attachments/accessories specified by the manufacturer.
- Use only with the cart, stand, tripod, bracket, or table specified by the manufacturer, or sold with the apparatus. When a cart is used, use caution when moving the cart/apparatus combination to avoid injury from tip-over.



Portable Cart Warning

- Unplug this apparatus during lightning storms or when unused for long periods of time.
- Refer all servicing to qualified service personnel. Servicing is required when the apparatus has been damaged in any way, such as power-supply cord or plug is damaged, liquid has been

spilled or objects have fallen into the apparatus, the apparatus has been exposed to rain or moisture, does not operate normally, or has been dropped.

• **ADDITIONAL SAFETY INFORMATION**

- Apparatus shall not be exposed to dripping or splashing and no objects filled with liquids, such as vases, shall be placed on the apparatus.
- Always leave sufficient space around the product for ventilation. Do not place product in or on a bed, rug, in a bookcase or cabinet that may prevent air flow through vent openings.
- Do not place lighted candles, cigarettes, cigars, etc. on the product.
- Connect power cord only to AC power source as marked on the product.
- Care should be taken so that objects do not fall into the product.
- Do not attempt to disassemble the cabinet. This product does not contain customer serviceable components.
- **IF YOUR PRODUCT OPERATES ON BATTERIES,** adhere to the following precautions:
 - A. Any battery may leak electrolyte if mixed with a different battery type, if inserted incorrectly, or if all batteries are not replaced at the same time.
 - B. Any battery may leak electrolyte or explode if disposed of in fire or an attempt is made to charge a battery not intended to be recharged.
 - C. Discard leaky batteries immediately. Leaking batteries can cause skin burns or other personal injury. When discarding batteries, be sure to dispose of them in the proper manner, according to your state/provincial and local regulations.

End user license agreement

End user license agreement

IMPORTANT: READ CAREFULLY BEFORE DOWNLOADING OR INSTALLING THIS SOFTWARE!

THIS END USER LICENSE AGREEMENT (THIS "EULA") IS A LEGAL AGREEMENT BETWEEN YOU AND AUDIOVOX CORPORATION AND, AS APPLICABLE, ANY AUDIOVOX SUBSIDIARY, AS DEFINED BELOW (COLLECTIVELY "AUDIOVOX"), FOR THE RCA BRANDED PORTABLE DIGITAL AUDIO/VIDEO DEVICE APPLICATION/DRIVER SOFTWARE PROGRAM WHICH MAY INCLUDE ASSOCIATED SOFTWARE COMPONENTS, SOFTWARE LICENSED BY AUDIOVOX FROM THIRD PARTIES ("LICENSORS") AND ASSOCIATED DOCUMENTATION, IF ANY (COLLECTIVELY, THE "PROGRAM"). THIS EULA CONTAINS IMPORTANT LEGAL LIMITATIONS, RESTRICTIONS AND DISCLAIMERS, AND ALSO SPECIFIES THE DURATION OF YOUR LICENSE.

BY INSTALLING THE PROGRAM OR CLICKING ON THE ACCEPTANCE BUTTON OF THE PROGRAM, COPYING OR OTHERWISE USING THE PROGRAM, YOU ACKNOWLEDGE AND AGREE THAT YOU HAVE READ THIS EULA, UNDERSTAND IT, AND AGREE TO BE BOUND BY ITS TERMS AND CONDITIONS. THIS PROGRAM IS PROTECTED BY COPYRIGHT LAWS AND INTERNATIONAL COPYRIGHT TREATIES, AS WELL AS OTHER INTELLECTUAL PROPERTY LAWS AND TREATIES. YOU MAY USE THE PROGRAM ONLY IN ACCORDANCE WITH THIS EULA, AND ANY SUCH USE IS HEREBY UNDERSTOOD TO BE CONDITIONAL UPON YOUR SPECIFIC AGREEMENT TO THE UNMODIFIED TERMS SET FORTH HEREIN. IF YOU DO NOT AGREE WITH ALL OF THE TERMS OF THIS EULA, CLICK ON THE REJECTION BUTTON AND/OR DO NOT INSTALL THE PROGRAM AND/OR DO NOT USE THE PROGRAM.

1. LICENSE

- (a) Under this EULA, you are granted a non-exclusive, non-sublicenseable, non-assignable and non-transferable (except as expressly set forth below) license (i) to use and install the Program on a single workstation, and (ii) to make one (1) copy of the Program into any machine-readable form for backup of the Program, provided the copy contains all of the original Program's proprietary notices.
- (b) You may transfer the Program and license to another party only as a part of the RCA branded Portable Digital Audio/Video Device ("A/V Device"), and only if the other party agrees to accept the terms and conditions of this EULA. If you transfer the Program, you must at the same time either transfer all copies to the same party or destroy any copies not transferred.
- (c) The terms of this EULA will govern any software upgrades or updates provided by AUDIOVOX that replace and/or supplement the original Program, unless such upgrade or update is accompanied by separate license terms and conditions in which case the terms of that separate license will govern. You acknowledge and agree that AUDIOVOX may automatically download upgrades or updates to the Program software to your computer in order to update, enhance, and/or further develop the Program.

2. LICENSE RESTRICTIONS

- (a) Except for the licenses expressly granted to you in this EULA, no other licenses or rights are granted or implied.
- (b) You may not (i) make the Program available over a network where it could be used by multiple computers at the same time; (ii) modify, translate, reverse engineer, decompile, disassemble (except to the extent that this restriction is expressly prohibited by law), or create derivative works

based upon the Program; (iii) copy the Program, except as expressly permitted herein; (iv) remove or alter any copyright notices on all copies of the Program; or (v) rent, lease or lend the Program. You agree that you shall only use the Program in a manner that complies with all applicable laws in the jurisdictions in which you use the Program, including, but not limited to, applicable restrictions concerning copyright and other intellectual property rights.

- (c) The Program may contain pre-release code that does not perform at the level of a final code release. In such case, the Program may not operate properly. Updated versions of the Program may be downloaded from www.rcaudiovideo.com/downloads
- (d) AUDIOVOX is not obligated to provide support services for the Program.
- (e) The Program is provided with "RESTRICTED RIGHTS". Use, duplication, or disclosure by the U.S. Government is subject to restrictions as set forth in subparagraph (c)(1)(ii) of DFARS 25.227-7013, or FAR 52.227-19, or in FAR 52.227-14 Alt. III, as applicable.

3. TERM AND TERMINATION

- (a) Your license is effective on the date you accept this EULA and remains in effect until this EULA is terminated by either party.
- (b) You may terminate this EULA and the associated license, without any notice or delay, by destroying or permanently erasing the Program and all copies thereof.
- (c) If you fail to comply with any of the terms of this EULA, in whole or part, your license will automatically terminate without notice from AUDIOVOX.
- (d) Upon termination of this EULA and your associated license, you shall cease all use of the Program and destroy or permanently erase the Program and all full or partial copies thereof.

4. WARRANTY DISCLAIMER

THE PROGRAM IS PROVIDED "AS IS" WITHOUT WARRANTY OF ANY KIND, EITHER EXPRESSED OR IMPLIED, INCLUDING, BUT NOT LIMITED TO THE IMPLIED WARRANTIES OF MERCHANTABILITY, FITNESS FOR A PARTICULAR PURPOSE, TITLE OR NON-INFRINGEMENT. THE ENTIRE RISK AS TO THE QUALITY AND PERFORMANCE OF THE PROGRAM IS WITH YOU. SHOULD THE PROGRAM PROVE DEFECTIVE, YOU (AND NOT AUDIOVOX, ITS SUPPLIERS, OR ITS DEALERS) ASSUME THE ENTIRE COST FOR ALL NECESSARY REPAIR OR CORRECTION.

This exclusion of warranty may not be allowed under some applicable laws. As a result, the above exclusion may not apply to you, and you may have other rights depending on the law that applies to you.

5. OWNERSHIP RIGHTS

All title and intellectual property rights, including but not limited to copyrights, in and to the Program and any copies thereof are owned by AUDIOVOX, its Licensors or its suppliers. All title and intellectual property rights in and to the content which may be accessed through use of the Program is the property of the respective content owner and may be protected by applicable copyright or other intellectual property laws and treaties. This license grants you no rights to use such content. All rights not expressly granted are reserved by AUDIOVOX or its Licensors.

End user license agreement

6. LIMITATION OF LIABILITY

- (a) TO THE MAXIMUM EXTENT PERMITTED BY APPLICABLE LAW, IN NO EVENT SHALL AUDIOVOX, OR ITS DEALERS BE LIABLE FOR ANY SPECIAL, INCIDENTAL, INDIRECT, OR CONSEQUENTIAL DAMAGES WHATSOEVER (INCLUDING, WITHOUT LIMITATION, DAMAGES FOR LOSS OF PROFITS, BUSINESS INTERRUPTION, CORRUPTION OF FILES, LOSS OF BUSINESS INFORMATION, OR ANY OTHER PECUNIARY LOSS) REGARDLESS OF CAUSE OR FORM OF ACTION, INCLUDING CONTRACT, TORT, OR NEGLIGENCE, ARISING OUT OF YOUR USE OF OR INABILITY TO USE THE PROGRAM, EVEN IF AUDIOVOX HAS BEEN ADVISED OF THE POSSIBILITY OF SUCH DAMAGES. BECAUSE SOME STATES AND JURISDICTIONS DO NOT ALLOW THE EXCLUSION OR LIMITATION OF LIABILITY OF CONSEQUENTIAL OR INCIDENTAL DAMAGES, THE ABOVE LIMITATION MAY NOT APPLY TO YOU.
- (b) YOU ASSUME RESPONSIBILITY FOR THE SELECTION OF THE APPROPRIATE PROGRAM TO ACHIEVE YOUR INTENDED RESULTS, AND FOR THE INSTALLATION, USE, AND RESULTS OBTAINED.

7. WINDOWS MEDIA

The software embedded within your A/V Device (the "Device Firmware") contains software licensed from Microsoft that enables you to play Windows Media Audio (WMA) files ("WMA Software"). The WMA Software is licensed to you for use with your A/V Device under the following conditions. By installing and using this version of the Device Firmware, you are agreeing to these conditions. IF YOU DO NOT AGREE TO THE END USER CONDITIONS OF THIS SECTION 7, DO NOT INSTALL OR USE THIS VERSION OF THE DEVICE FIRMWARE.

The WMA Software is protected by copyright and other intellectual property laws. This protection also extends to documentation for the WMA Software, whether in written or electronic form.

GRANT OF LICENSE: The WMA Software is only licensed to you as follows:

You may use this version of the Device Firmware containing the WMA Software only as such use relates to your A/V Device.

You may not reverse engineer, decompile, or disassemble the WMA Software, except and only to the extent that such activity is expressly permitted by applicable law. You may transfer your right to use the Device Firmware only as part of a sale or transfer of your A/V Device, on the condition that the recipient agrees to the conditions set forth herein. If the version of the Device Firmware that you are transferring is an upgrade, you must also transfer all prior versions of the Device Firmware that you have which include the WMA Software. MICROSOFT IS NOT PROVIDING ANY WARRANTY OF ANY KIND TO YOU FOR THE WMA SOFTWARE, AND MICROSOFT MAKES NO REPRESENTATION CONCERNING THE OPERABILITY OF THE WMA SOFTWARE.

The WMA Software is of U.S. origin. Any export of this version of the Device Firmware must comply with all applicable international and national laws, including the U.S. Export Administration Regulations, that apply to the WMA Software incorporated in the Device Firmware.

Content owners use Windows Media digital rights management technology ("WMDRM") to protect their intellectual property, including copyrights. This device uses WMDRM software to access WMDRM-protected content. If the WMDRM software fails

to protect the content, content owners may ask Microsoft to revoke the software's ability to use WMDRM to play or copy protected content. Revocation does not affect unprotected content. When you download licenses for protected content, you agree that Microsoft may include a revocation list with the licenses. Content owners may require you to upgrade WMDRM to access their content. If you decline to accept an upgrade, you will not be able to access content that requires the upgrade.

8. THIRD PARTY SOFTWARE

ANY THIRD PARTY SOFTWARE THAT MAY BE PROVIDED WITH THE PROGRAM IS INCLUDED FOR USE AT YOUR OPTION. IF YOU CHOOSE TO USE SUCH THIRD PARTY SOFTWARE, THEN SUCH USE SHALL BE GOVERNED BY SUCH THIRD PARTY'S LICENSE AGREEMENT, AN ELECTRONIC COPY OF WHICH WILL BE INSTALLED IN THE APPROPRIATE FOLDER ON YOUR COMPUTER UPON INSTALLATION OF THE SOFTWARE. AUDIOVOX IS NOT RESPONSIBLE FOR ANY THIRD PARTY'S SOFTWARE AND SHALL HAVE NO LIABILITY FOR YOUR USE OF THIRD PARTY SOFTWARE.

9. GOVERNING LAW

If you acquired this A/V Device in the United States, this EULA shall be governed and construed in accordance with the laws of the State of Indiana, U.S.A. without regard to its conflict of laws principles. If you acquired this A/V Device outside the United States or the European Union, then local law may apply.

10. GENERAL TERMS

This EULA can only be modified by a written agreement signed by you and AUDIOVOX, and changes from the terms and conditions of this EULA made in any other manner will be of no effect. If any portion of this EULA shall be held invalid, illegal, or unenforceable, the validity, legality, and enforceability of the remainder of the Agreement shall not in any way be affected or impaired thereby. This EULA is the complete and exclusive statement of the agreement between you and AUDIOVOX, which supersedes all proposals or prior agreements, oral or written, and all other communications between you and AUDIOVOX, relating to the subject matter of this hereof. AUDIOVOX'S Licensors shall be considered third party beneficiaries of this Agreement and shall have the right to enforce the terms herein.

"AUDIOVOX SUBSIDIARY" shall mean any person, corporation, or other organization, domestic or foreign, including but not limited to subsidiaries, that is directly or indirectly controlled by Audiovox Corporation including, but not limited to, Audiovox Consumer Electronics, Inc. and Audiovox Electronics Corporation. For purposes of this definition only, the term "control" means the possession of the power to direct or cause the direction of the management and policies of an entity, whether by ownership of voting stock or partnership interest, by contract, or otherwise, including direct or indirect ownership of at least fifty percent (50%) of the voting interest in the entity in question.

Before you begin

Dear RCA Customer,

Thank you for purchasing the Player. This product will play mp3 and Windows Media™ audio (WMA) content as well as content purchased from most online music download services.

RCA EasyRip™ Media Software, installed automatically when you connected this player to your PC, lets you import music files from CDs and other sources, organize your music library, and transfer unprotected MP3 and WMA files to and from this player.

To transfer DRM-protected files to this player, you must use the application provided by the online music store.

Copyright warning

This player is for your personal use only. Unauthorized recording or duplication of copyrighted material may infringe upon the rights of third parties and may be contrary to copyright laws.

Back up your data

As with any portable player, you must back up the drive regularly. The manufacturer is not responsible for lost data.

Unpacking your player

All of the items listed below should have been packed in the box with your player.

- RCA player (contains music management software installer and user manual)
- Quick Start Guide
- USB cable
- Earphones
- Armband

Computer system requirements

- Pentium III 500MHz or higher recommended
- Windows® XP (service pack 1 or higher) or Windows Vista™
- Internet Explorer 6.0 or higher with Internet access
- Windows Media Player 10 or higher
- 250MB or more free hard disk space for the software
- 128MB RAM (256MB recommended)
- CD-ROM drive capable of digital audio extraction
- USB port (2.0 recommended)
- Sound card

Secure music transfer requirements

The default setting of this player is in **MSC** (Mass Storage Class) mode when connected to your PC. To enable function of transferring subscription music content to the player, select **MTP** (Media Transfer Protocol) mode under *Protocol* in the player's *Settings* menu (refer to page 28).

Getting the latest software, firmware and information

Go to www.rcaaudiovideo.com/downloads for the latest firmware, RCA EasyRip Media Software and user manual for your player. Follow the instructions there to download and install files.

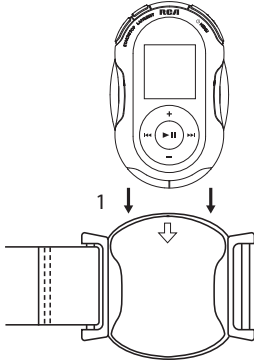
Frequently asked questions

For answers to frequently asked questions (FAQ), go to www.rcaaudiovideo.com/faq.

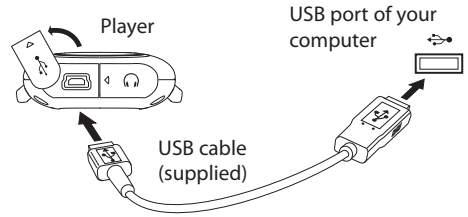
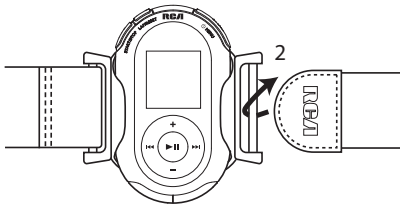
Before you begin

Using the armband

1. Slide the player into the holder of the armband by aligning with the arrow on the holder.



2. Slide the end of the armband through the ring and secure with the velcro tape.




- It might take several seconds for the player to be detected. Click **Refresh** in My Computer or Windows Explorer to make sure the player has been detected.
- The player is capable of transferring files at USB 2.0. If USB 2.0 port is available on your computer, use it to connect to your player. The player is still backward compatible with the older USB 1.1 ports. However, you will not be able to take full advantage of the potential speed increase.
- **IMPORTANT:** Don't disconnect the USB cable to the PC or the player during the software installation.
- If the installer does not auto-launch, locate and right-click the associated drive letter (i.e. JET) to show the option menu and select the "Install RCA EasyRip™" option.



Connecting to the computer

- Connect the player to your computer with the USB cable provided. The player will turn on automatically.
- The player will be connected in MSC (Mass Storage Class) mode. It will appear as a drive letter on your computer and behave as a detachable drive for file transfer in one or both directions.
- The RCA EasyRip™ Media Software installer (stored in the player*) will launch automatically. Click **NEXT** to begin the installation and follow the instructions to install the software on your PC.
- The software installer can be deleted from the player after installation to free up more storage spaces.

Charging the player

The player charges automatically every time you connect it to your computer. To fully charge the player, make sure your computer is on and the device is connected for at least 3 hours. Refer to the battery level icon  on the display to check the battery level. Recharge the player when the icon is empty.

*The latest software can be downloaded from www.rcaaudiovideo.com.

Managing files on your RCA Player

Before you begin using your RCA player, you'll want to copy your media files to the player. You can use any of the following methods to transfer content:

- RCA EasyRip
- Drag and drop files in Windows Explorer
- Software provided by online music stores

To transfer DRM-protected content, use the software provided by the online music store.

The following sections explain how to copy unprotected files to the player. For instructions on transferring protected files, please refer to the documentation for the software you use to transfer the files.

Using RCA EasyRip

The RCA EasyRip software was installed automatically the first time you connected this player to your PC.

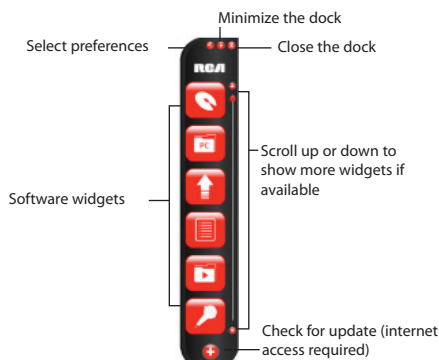
EasyRip lets you:

- Import music from CDs
- Organize your music library on your PC
- Create playlists
- Copy files from your library to the player
- Copy files from the player to your library
- Delete files from the player

For instructions on organizing your library and creating playlists, please refer to the EasyRip help.

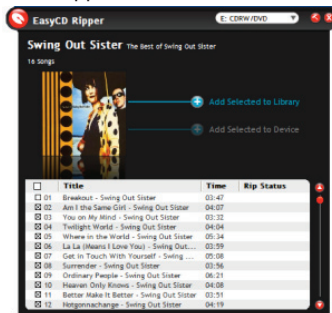
To start EasyRip (using either method below):

- Click on the RCA system tray icon and select **RCA EasyRip** from the menu.
- Double-click the EasyRip icon on your PC's desktop. The EasyRip dock appears at the side of your screen.



To import music from a CD to the player:

1. Click **CD Ripper** on the EasyRip dock. The CD Ripper window appears.



2. Load the CD into your PC.
 - CD Ripper then gets the track names from the Internet. (If it cannot get the names, you can name the tracks yourself; see the EasyRip help for instructions.)
 - To import only selected tracks, click the checkbox next to the desired track.
3. Click **Add Selected to Device** to start importing music.

To load your media content into the EasyRip library:

1. Click **PC Library** on the EasyRip dock.

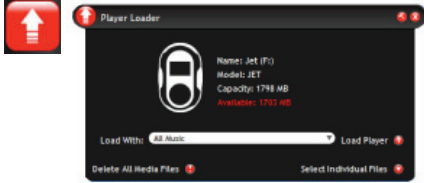


2. Click **Import Media**.
3. Select the folder (with media files) you wish to load and click **OK**.

Managing files on your RCA Player

To copy your music/video/picture library to the player:

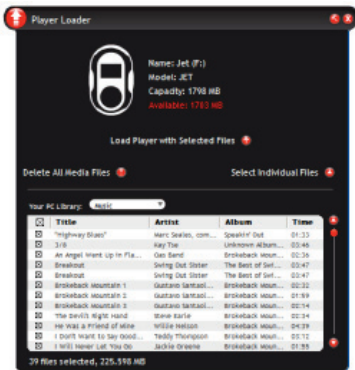
1. Click **Player Loader** on the EasyRip dock. The Player Loader window appears.



2. Select the file type from the drop-down menu next to **Load with:** and then click **Load Player**. EasyRip then copies as many files as can fit onto the player.

To copy selected files or playlists to the player:

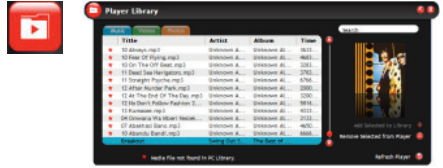
- In the Player Loader window, click **Select Individual Files**. The window expands to list the music on your PC.



- To copy selected files, choose **Music/Video/Photo** from the **Your PC Library** list, then check the files you wish to load and click **Load Player with Selected Files**.
- To copy selected playlists, open the **Load with** drop down menu and then choose the desired playlist and click **Load Player**.

To copy files from the player to your music library:

1. Open **Player Library**.



2. Select desired files.
3. Click **Add Selected to Library**.

To delete selected files from the player:

1. Open **Player Library**.
2. Select unwanted files.
3. Click **Remove Selected from Player**.

To delete all files in the player:

1. Open **Player Loader**.
2. click **Delete All Media Files**.

- Video files must be transferred via RCA EasyRip which converts files automatically to optimal format for playback on this player.
- **Help** – For detailed explanation on the above or other software widgets on the RCA EasyRip, click the Help widget.

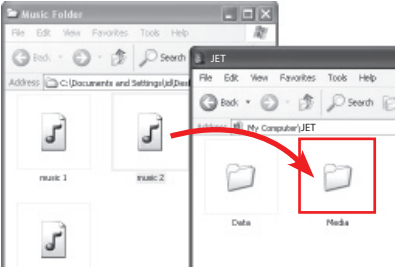


Managing files on your RCA Player

Using Windows Explorer

To copy files in Windows XP with Windows Media Player 10 installed:

1. Open the player in Windows Explorer.
2. Drag and drop music files onto the **Media** folder.



To copy files in Windows Vista or Windows XP with Windows Media Player 11 installed:

1. Open the player in Windows Explorer
2. Open **Internal Storage**.



3. Drag and drop music files.

- Drag-and-drop picture files onto the root level or a specific folder of the player for viewing.
- Video files must be converted and transferred via RCA EasyRip for playback. (Refer to *Using RCA EasyRip*)



Deleting files from the player

For any files you have transferred to the player, you may delete them while you have connected the player with your computer.


1. Open the player in Windows Explorer and then navigate to the folder containing the files.
 2. Select the files you want to remove and then press the Delete key on the keyboard of your PC.
- It is best to remove subscription files from the player by using Windows Media Player.

Disconnecting the player from the PC

If Windows sees the player as an MTP device:

- Unplug the player from the PC when no file transfer is in progress.

If Windows sees the player as a removable disk:

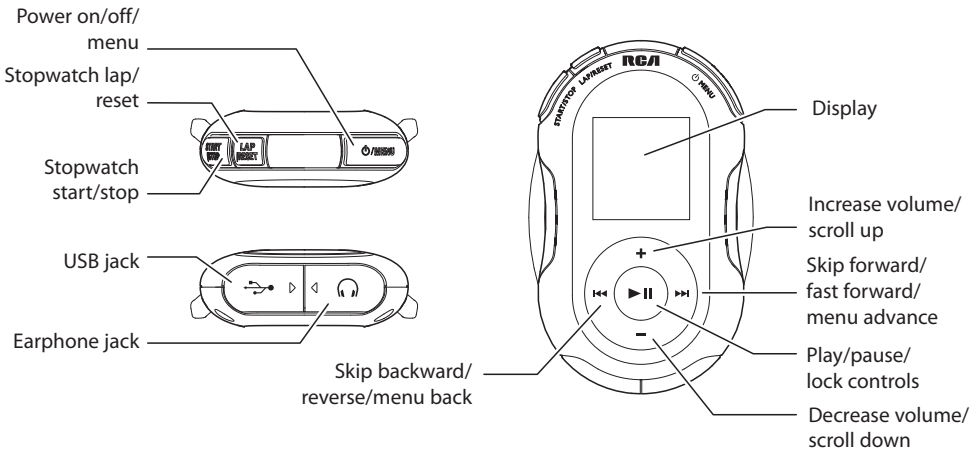
1. In the Windows system tray, click the **Safely Remove Hardware** icon  and then select the player from the list of devices.
2. When the **Safe to remove hardware** message appears, unplug the player from the PC.



Do not disconnect the USB connection during file download. Doing so may corrupt system files or the files being downloaded.



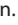
General controls



Turning the player on and off

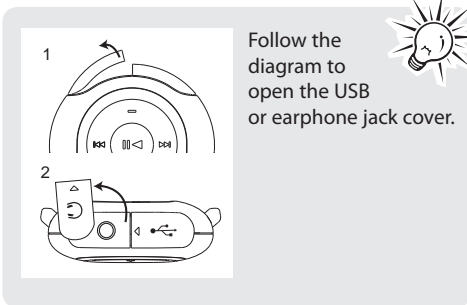
To turn the player on, press and hold **⏻/MENU**. Press and hold **⏻/MENU** again to turn the player off.

Locking the player controls

To lock the player controls to prevent them from being activated accidentally, press and hold **⏸**. To unlock the controls, press **⏸** again. When the controls are locked, the lock icon  appears on the display.

Resetting the player

If the player stops operating properly, you can reset it by pressing and holding **⏻/MENU** for more than 10 seconds.



Using the menus

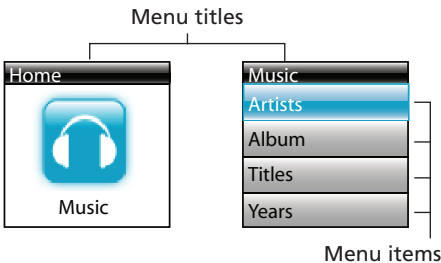
Menu types

The player has two types of menu:

Player menu

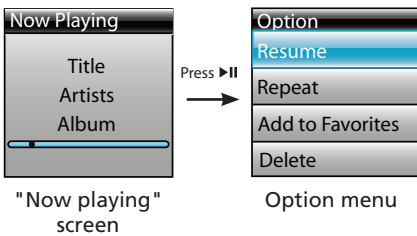
The player menu appears when you turn on the player or if you press **MENU** while listening to the player. It lets you:

- Browse for and play music, audiobook, video and picture files
- Listen to the radio
- Access the fitness functions – stopwatch, pedometer, calorie counter, body mass index (BMI) calculator, etc.
- Change the player's settings – language, display brightness, etc.



Option menu

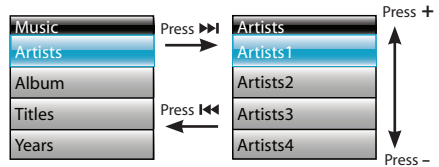
The option menu appears if you press **▶II** while listening to the player. It provides different options depending on what you are listening to when you press **▶II**.



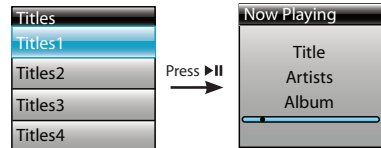
Menu navigation

When a menu is displayed:

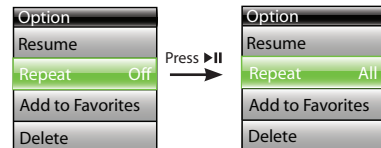
- Press **+** and **-** to scroll up and down the list of menu items. (The Home menu shows one item at a time; other menus show four at a time.)
- Press **▶II** to go to the next menu level. Press **◀◀** to return to the previous menu level.



- If the highlighted item is playable (for example, an audio file), press **▶II** to start playback.



- If the highlighted item indicates the current setting (for example, the repeat mode setting), press **▶II** to change the setting.



Using the menus

The Home menu

The top-level or “Home” menu is always displayed when you press **⏏/MENU**. The menu options are:



Now Playing

Available only during playback. Press **▶▶** to return to the currently playing file.



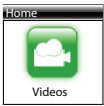
Music

Press **▶▶** to play all the music files on the player. Press **▶▶** to enter the Music menu and choose an artist, album, genre, year, or individual title.



Pictures

Press **▶▶** to play a slideshow of all the image files on the player.



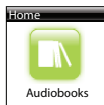
Videos

Press **▶▶** to play all the videos on the player.



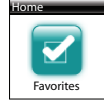
Radio

Press **▶▶** to listen to the radio. Press **▶▶** to enter the Radio menu and choose to either listen to the radio or play recordings of previous radio shows.



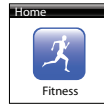
Audiobooks

Press **▶▶** to play all the audiobooks on the player. Press **▶▶** to enter the Audiobook menu and choose a particular audiobook.



Favorites

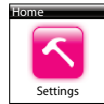
As you listen to music, you can add individual titles to a “favorites” playlist. Press **▶▶** to play the entire playlist. Press **▶▶** to enter the Favorites menu and choose a particular title or edit the playlist.



Fitness

Press **▶▶** to enter the Fitness menu, which lets you:

- Record your running details
- Change the stopwatch settings
- Check your results
- Use the pedometer
- Use the calorie counter
- Enter personal data, such as sex, height and weight, for the BMI calculator and pedometer
- Calculate your body mass index (BMI)



Settings

Press **▶▶** to enter the Settings menu, which lets you:

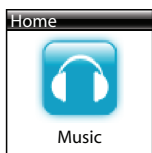
- Choose the shuffle playback mode
- Choose an equalizer setting
- Customize the music menu
- Set the slideshow image duration
- Change the screen brightness
- Change the screensaver setting
- Turn on/off the automatic shutdown feature
- Switch between US and European radio frequency steps
- Choose a record duration setting
- Change the language of the player’s menus
- Switch between English (Imperial) and metric units
- Switch between MTP and MSC modes
- Flip the display 180°
- Display the firmware version, space used, and space available
- Set date and time
- Reset the player’s settings to the factory defaults

Music

Playing music files

The player sorts your music files by artist, album, track name (title), genre and year.

1. Press **⏠/MENU** to display the Home menu, then press + or - to select **Music**.

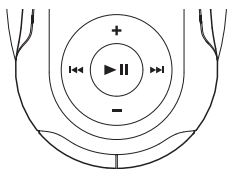


- To play all the files on the player, press **▶▶**.
- To start playback at a particular artist, album, title, genre or year, press **▶▶▶** to enter the Music menu. Use + or - and **⏪** or **⏩** to navigate through the menus and select the desired item, then press **▶▶**.

The item that you can select for playback is not limited to a single file, you may select an artist, an album and then press **▶▶** to start playback of all files within your selected item.



Music playback controls



- | | |
|--------|--|
| ⏪ | Skips to the previous file*, press and hold to scan backward within a file |
| ⏩ | Skips to the next file, press and hold to scan forward within a file |
| ▶ | Starts/pauses playback and shows/hides the Option menu |
| + or - | Increases or decreases the volume during playback |

* Press **⏪** within the beginning 4 seconds of the current music file to skip to previous file. Otherwise, you will return to the beginning of the current file.

Option menu (music playback)

Press **▶||** to show or hide the Option menu during playback. Press + or - to highlight an option and then press **▶||** to confirm the selection or change the setting.

The following options are available:

- **Resume** – to resume playback
- **Repeat** – press **▶||** repeatedly to select repeat current **⏮** or all files **⏮** (corresponding icon shows on the display)
- **Add to Favorites** – to add the current file in the Favorites playlist (read page 23). If the file is already in the playlist, this option changes to **Clear from Favorites** to remove the current file from the playlist
- **Delete** – to remove current file from the player

Music playback display



1. Current file number/total number of files
2. Song name
3. Artist name
4. Album name
5. Elapsed playback time
6. File total time
7. Playback progress bar
8. File bitrate
9. File type

The information provided in the playback screen depends upon the ID3 tags that have been set up for the music file.

Pictures

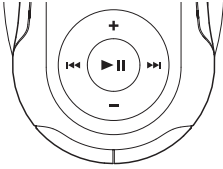
Playing picture files

1. Press **⏏/MENU** to display the Home menu, then press + or - to select **Pictures**.



2. To view all the pictures in file name order, press **▶||**.

Picture viewing controls



◀◀	Goes back, skips backward
▶▶	Advances, skips forward
▶	Starts/pauses slideshow if it is activated, shows/hides the Option menu

Option menu (picture viewing)

Press **▶||** to show or hide the Option menu during playback. Press + or - to highlight an option and then press **▶||** to confirm the selection or change the setting.

The following options are available:

- **Resume** – to resume playback
- **Slideshow** – to select the slideshow image duration. Press **▶||** repeatedly to select among off, 3, 5, 10 and 15 seconds
- **Delete** – to remove current file from the player

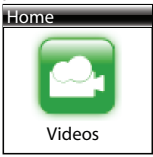
Refer to page 10-12 for transferring picture files to the player.



Videos

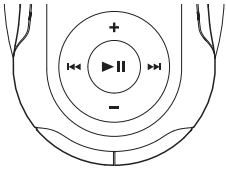
Playing video files

1. Press **HOME/MENU** to display the Home menu, then press + or - to select **Videos**.



2. To view all the videos in file name order, press **▶||**.

Video viewing controls



◀◀	Goes back, skips backward*, press and hold to scan backward within a file
▶▶	Advances, skips forward, press and hold to scan forward within a file
▶	Starts/pauses playback and shows/hides the Option menu
+ or -	Increases or decreases the volume during playback

* Press **◀◀** within the beginning 4 seconds of the current file to skip to previous file. Otherwise, you will return to the beginning of the current file.

Option menu (video playback)

Press **▶||** to show or hide the Option menu during playback. Press + or - to highlight an option and then press **▶||** to confirm the selection or change the setting.

The following options are available:

- **Resume** – to resume playback
- **Repeat** – press **▶||** repeatedly to select repeat current **C** or all files **C** (corresponding icon shows on the display)
- **Delete** – to remove current file from the player

Video files must be converted to optimal format for playback on this player. The RCA EasyRip Media Software can convert the video files automatically while transferring to the player. Refer to page 10-11 for details.



Radio

The radio uses the earphones as an antenna. For better reception, extend the earphone cable as far as possible.



Playing FM radio

To turn the radio on:

1. Press **⏏/MENU** to display the player menu.
2. Press + or – to select **Radio** and press **▶▶** to enter the radio menu.



3. While **Listen** is highlighted, press **▶▶** to start listening. The frequency screen appears.



To tune the radio:

- Press and hold **◀◀** or **▶▶** until "Searching" shows and then release the button to start scanning through the frequency range. The player stops scanning when it detects the next station.
- Press **◀◀** or **▶▶** to step through the frequency range.

To turn the radio off:

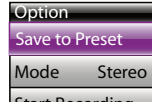
- Either turn the player off or press **⏏/MENU** and choose a different option.

Storing and recalling preset stations

You can store up to 20 preset stations in the player.

To store the currently playing station as a preset:

1. Press **▶▶** to display the Option menu.
2. Press + or – to highlight **Save to Preset** and then press **▶▶**.
 - If all 20 preset station numbers are occupied, the option changes to **Replace Preset**.



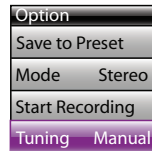
3. The first available preset number is displayed. Press + or – to select a different preset number if desired.
 - If you choose a preset number that already contains an FM station, you will replace the existing station with the new station.

4. Press **▶▶** to highlight **Yes** and then press **▶▶**.



To listen to a preset station:

1. When the radio is playing, press **▶▶** to display the Option menu.
2. Press + or – to highlight **Tuning** and press **▶▶** to switch from **Manual** to **Preset**.



3. Press + or – to highlight **Back** and press **▶▶** to return to the frequency screen.

Radio

4. Press **◀** or **▶** to choose the desired station preset number. The preset number shows at the top left of the screen.



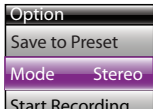
Preset number

Improving FM radio sound

If stereo reception is noisy, you can often reduce the noise by switching to mono.

To switch between stereo and mono:

1. While the radio is playing, press **▶** to display the Option menu.
2. Press **+** or **-** to highlight **Mode** and then press **▶** to switch between **Stereo** and **Mono**.



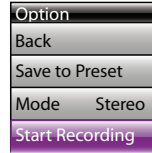
3. Press **+** or **-** to highlight **Back** and press **▶** to return to the frequency screen.

Recording FM radio

You can record the radio and play back recordings as well as copy the recordings (WAV files) to your PC.

To record the currently playing radio station:

1. Press **▶** to display the Option menu.
2. Press **+** or **-** to highlight **Start Recording** and then press **▶** to start recording.



- Press **▶** to pause or resume recording.
3. Press **⏏**/MENU to stop recording.
 - The player names each recording *FMRecXXX.wav* where XXX is a unique number.

To record for a specific duration:

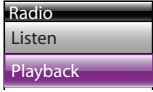
Refer to *RecDur* on page 28.

Radio

Playing back FM radio recordings

To play back a recording:

1. Press **MENU** to display the player menu.
2. Press + or – to select **Radio** and press **▶▶** to enter the radio menu.
3. Press + or – to highlight **Playback** and press **▶▶** to see the list of recordings.



4. Press + or – to select a recording and press **▶▶** to start playback.

Option menu (recording playback)

Press **▶▶** to show or hide the Option menu during playback. Press + or – to highlight an option and then press **▶▶** to confirm the selection or change the setting.

The following options are available:

- **Resume** – to resume playback
- **Repeat** – press **▶▶** repeatedly to select repeat current **C** or all files **C** (corresponding icon shows on the display)
- **Delete** – to remove current file from the player

Copying recordings to your PC

Recordings are stored as WAV files in the “FMRecord” folder on the player.

To copy recordings to the PC:

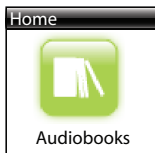
1. Plug the player into the PC.
 2. Open the player’s Record folder.
 3. Select the files you want to copy and drag and drop them onto a folder on the PC.
- Almost all audio applications can play WAV files.

Audiobooks

Playing audiobooks

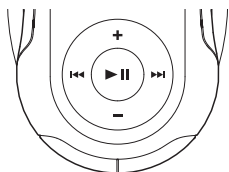
Audiobook playback is similar to music playback.

1. Press **⏠/MENU** to display the Home menu, then press + or - to select **Audiobooks**.



- To play all the audiobooks in file name order, press **▶▶**.
- To play back a particular audiobook, press **▶▶** to enter the Audiobooks menu. Use + or - to select the desired item, then press **▶▶**.

Audiobook playback controls



⏮	Skips to previous file/section, press and hold to scan backward within a file
⏭	Skips to the next file or section, press and hold to scan forward within a file
▶	Starts/pauses playback and shows/hides the option menu
+ or -	Increases or decreases the volume during playback

Option menu (Audiobook playback)

Press **▶||** to show or hide the Option menu during playback. Press + or - to highlight an option and then press **▶||** to confirm the selection or change the setting.

The following options are available:

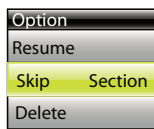
- **Resume** – to resume playback
- **Skip** – to select section-by-section or file-by-file skipping (read below section for details)
- **Delete** – to remove current file from the player

Skipping through audiobook sections

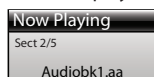
If the currently playing audiobook contains sections, you can choose to skip forward and back between sections when you press **⏮** or **⏭**, instead of skipping between files.

To choose section-by-section skipping:

1. Press **▶||** to pause playback and display the Option menu.
2. Press + or - to select **Skip**, then press **▶||** to switch to Section.



3. Press + to select **Resume** and press **▶||** to resume playback.
- Section-by-section skipping is indicated by **Sect** on the display.



- The player returns to file-by-file skipping automatically when you play another file or turn the player off.

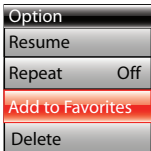
Favorites

Creating a "Favorites" playlist

You can create a playlist of your favorite music, adding new files to the playlist as you listen to them. This function is not available for other media formats such as videos, pictures, audiobooks and recordings.

To add the currently playing music file in the playlist:

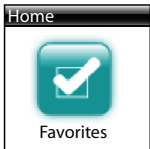
1. Press **⏸** to pause playback and display the Option menu.
2. Press **+** or **-** to highlight **Add to Favorites** and then press **▶▶**.



- **Added Successfully** shows on the display.
- Repeat the above steps for adding more music files.

To listen to the Favorites playlist:

1. Press **⏻**/MENU to display the Home menu.
2. Press **+** or **-** to select **Favorites**.

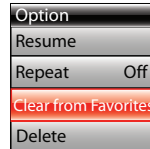


- To play the entire playlist, press **▶▶**.
- To play back a particular file, press **▶▶** to enter the Favorites menu and then press **▶▶** to list the files. Press **+** or **-** to select the desired file and press **▶▶**

Removing files from "Favorites" playlist

To remove a music file from the playlist:

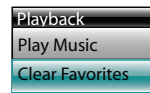
1. While the music file is playing, press **⏸** to pause playback and display the Option menu.
2. Press **+** or **-** to highlight **Clear from Favorites** and press **▶▶**.



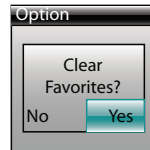
3. Press **▶▶** to highlight **Yes** and then press **▶▶** to remove the file from the playlist.

To remove all music files from the playlist:

1. Press **⏻**/MENU to display the Home menu.
2. Press **+** or **-** to select **Favorites** and press **▶▶** to enter the Favorites menu.
3. Press **+** or **-** to highlight **Clear Favorites** and press **▶▶**



4. Press **▶▶** to highlight **Yes** and then press **▶▶** to remove all files from the playlist.



Stopwatch

For single lap timing:

1. Press **START/STOP** to show the stopwatch.



2. Press **START/STOP** again to start the stopwatch.
3. Press **START/STOP** to pause the stopwatch and again to resume timing.
4. Press **LAP/RESET** to reset the stopwatch when it is stopped.

For multiple lap timing:

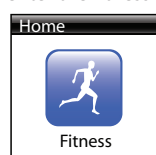
1. Press **START/STOP** to show the stopwatch.
2. Press **START/STOP** again to start the stopwatch.
3. Press **LAP/RESET** at the start of the second, third lap and so on (maximum 99 laps).



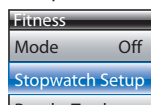
4. Press **START/STOP** to stop the stopwatch when all laps are finished.
5. Press + or - to review all the lap times.
6. Press **LAP/RESET** to clear all lap times and reset the stopwatch.

To use the count down timer:

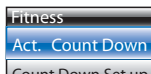
1. Press **⏏/MENU** to display the Home menu.
2. Press + or - to select **Fitness** and press **▶▶** to enter the fitness menu.



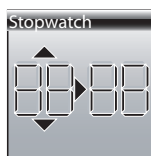
3. Press + or - to highlight **Stopwatch Setup** and then press **▶▶**.



4. Press **▶▶** to select **Act. Count Down** and then press **◀◀**.



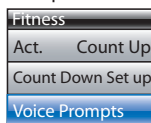
5. Press + or - to highlight **Count Down Set up** and then press **▶▶**.
6. Press **◀◀** or **▶▶** to shift between minute and second settings and press + or - to adjust the values.



7. When finished, press **▶▶**.
8. Press **START/STOP** to start the count down timer.

To activate voice prompts to remind you the time passed or remains:

1. Press **⏏/MENU** to display the Home menu.
2. Press + or - to select **Fitness** and press **▶▶** to enter the fitness menu.
3. Press + or - to highlight **Stopwatch Setup** and then press **▶▶**.
4. Press + or - to highlight **Voice Prompts** and then press **▶▶**.



Fitness

5. Press + or – to highlight **Period** or **Voice** and then press ► to change the settings.



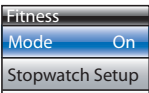
- **Period:** Off, 5, 10, 20, or 30 minutes
- **Voice:** Male, female or beep

Fitness mode

To record your run details:

To record your run details (calorie burnt and distance completed).

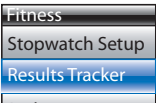
1. Press **⏏/MENU** to display the Home menu.
2. Press + or – to select **Fitness** and press ► to enter the fitness menu.
3. Press + or – to highlight **Mode** and then press ► to select **On**.



- Once Fitness mode is turned on, the stopwatch and pedometer will be activated. Start your running now!
 - Press **⏏/MENU** to display the Home menu and perform other operations (e.g. Selecting music). It will not affect the record of your run details.
4. When you have finished running, repeat steps 1-3 and select **Mode** as **Off**.

To track your records:

1. Press **⏏/MENU** to display the Home menu.
2. Press + or – to select **Fitness** and press ► to enter the fitness menu.
3. Press + or – to highlight **Results Tracker** and then press ►.

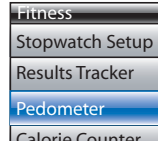


4. Press + or – to highlight a record and then press ► to check the details.

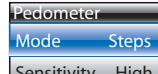
Pedometer

To activate the pedometer:

1. Press **⏏/MENU** to display the Home menu.
2. Press + or – to select **Fitness** and press ► to enter the fitness menu.
3. Press + or – to highlight **Pedometer** and then press ►.



4. Press + or – to highlight **Mode** and press ► to change the setting:



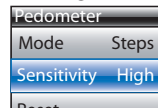
- Off = pedometer is off
- Steps = number of steps to be displayed
- Distance = estimated distance to be displayed
- Calories = estimated calorie-burnt to be displayed

- On the display, the selected mode is indicated by **St** (for Steps mode), **mi** or **km** (for Distance mode) or **kcal** (for Calories mode).
- Estimated distance = number of steps x stride length
- Estimated calorie-burnt = weight x estimated distance (x 0.73 for English unit)
- For accurate measurement, use the player on your arm with the armband provided.



To change the sensitivity of pedometer:

1. Press **⏏/MENU** to display the Home menu.
2. Press + or – to select **Fitness**.
3. Press + or – to highlight **Pedometer** and then press ►.
4. Press + or – to highlight **Sensitivity** and press ► to change the setting (low, medium or high).



Fitness

To reset the pedometer:

1. Press **⏪/MENU** to display the Home menu.
2. Press + or - to select **Fitness**.
3. Press + or - to highlight **Pedometer** and then press **▶▶**.
4. Press + or - to highlight **Reset** and press **▶▶** to reset the pedometer.

Personal info

For accurate use of the pedometer, calculation of the BMI (Body Mass Index) and EasyRip Fitness feature, personal information are required.

To enter personal information:

1. Press **⏪/MENU** to display the Home menu.
2. Press + or - to select **Fitness** and press **▶▶** to enter the fitness menu.
3. Press + or - to highlight **Personal Info** and then press **▶▶**.
4. Press + or - to highlight **Sex, Weight, Height or Stride** and then press **▶▶** to confirm selection.

Fitness	
Sex	Male
Weight	000lb
Height	00ft00in
Stride	000in

5. Press + or - to adjust the value while it is blinking (except for sex, press **▶▶** for selection).
 6. When finished, press **▶▶**. Repeat step 4-5 for other adjustments.
- To switch between English (Imperial) and metric units when entering personal information, refer to Settings on page 28.
 - To measure your stride length, measure the distance traveled by walking 20 steps and divide the distance by 20.

BMI (Body Mass Index)

What's BMI?

BMI is a measure which takes into account a person's weight and height to estimate total body fat in adults. It may vary depending on your body type and composition. BMI is calculated by the following formula:

$$\begin{aligned} \text{BMI} &= \text{Body weight (kg)} / [\text{Body height (m)}]^2 \\ &= 703 \times \text{Body weight (lb)} / [\text{Body height (inch)}]^2 \end{aligned}$$

You should have entered your personal information before checking this index (refer to *Personal info*).

To check your BMI:

1. Press **⏪/MENU** to display the Home menu.
2. Press + or - to select **Fitness** and press **▶▶** to enter the fitness menu.
3. Press + or - to highlight **BMI** and then press **▶▶**.

Meanings of BMI:

Different BMI ranges correspond to different health condition.

Health Condition	Male	Female
Underweight	Less than 20 (<20)	Less than 18 (<18)
Ideal	Greater than or equal to 20 but less than 25 (≥20 but <25)	Greater than or equal to 18 but less than 23 (≥18 but <23)
Overweight	Greater than or equal to 25 but less than 30 (≥25 but <30)	Greater than or equal to 23 but less than 30 (≥23 but <30)
Obese	Greater than or equal to 30 (≥30)	Greater than or equal to 30 (≥30)

BMI is a general indicator of your health. The information above is a rough estimation only. To have a full understanding of your health condition, consult with your doctor.

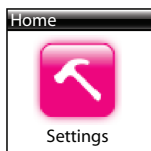


Settings

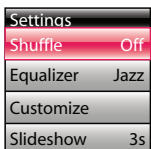
Changing the player's settings

To change the player settings:

1. Press **⏏/MENU** to display the Home menu.
2. Press **+** or **-** to select **Settings** and press **▶▶** to enter the settings menu.



3. Press **+** or **-** to select a setting and then press **▶▶** to change it.



Shuffle

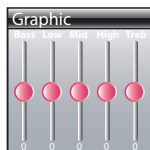
- Press **▶▶** repeatedly to select shuffle on or off. Music files (mp3/wma/wav) will be played randomly when shuffle is activated.
- The shuffle icon (**⌘**) shows on display when shuffle is on.

Equalizer

- Press **▶▶** repeatedly to choose an equalizer setting (Flat/Bass/Jazz/Pop/Rock/Graphic).

Setting Graphic mode:

- Press **▶▶** repeatedly until Graphic appears and then press **▶▶**. In graphic mode, you can customize the five band equalizer. Press **◀◀** or **▶▶** to select a band and then press **+** or **-** to adjust the band level. When finished, press **⏏/MENU** to exit.



Customize

To select what you wish to display in the submenu of the Music menu: Artists, Album, Titles, Genres, and Years.

Slideshow

To select the slideshow image duration. Press **▶▶** repeatedly to select among: off, 3, 5, 10 and 15 seconds.

Brightness

To adjust the display light brightness.

Screensaver

To set the duration (10s, 20s, 30s and 1m) before the screensaver activates.

Power save

To set the time interval (Off, 1m, 2m, 5m and 10m) before the player turns off if no key is pressed.

Settings

FreqStep (Frequency Step)

To change the way that the player scans through the radio frequencies. Switch to EU if you bring the player to Europe; switch back to US when you return to North America.

RecDur (Record duration)

To change the duration (Max, 5 minutes, 30 minutes, 1 hour) for radio recording.

Language

To change the language of the player menus.

Unit

To switch between English (Imperial) and metric units when entering personal information. Refer to page 26 for details.

Protocol

To switch between MSC (Mass Storage Class) and MTP (Media Transfer Protocol) modes when connected to your PC. To enable function of transferring subscription music content, select MTP mode.

Flip display

To flip the display 180°.

System info

To show the amount of free space available and the firmware version.

Date and time

To set the date and time (for Fitness mode).

Restore defaults

To reset all menus to factory defaults.

Additional information

Tips and troubleshooting

Cannot delete files on the player.

- For any files you have transferred to the player, you may delete them while you have connected the player with your computer. Highlight the unwanted file in the player's file directory on your computer and press the delete key on your computer to delete the file. Subscribed files are best to be removed through Windows Media Player.
- For deleting files from the player, refer to Option menu from page 16-22 for details.

Player repeats same tracks or all tracks.

- Repeat play is turned on. Press the PLAY button to show the option menu and change the play mode.

Audio distorted at high volume.

- Change the Equalizer mode to Flat.
- Turn down the volume.

The audio tracks on my player keep skipping or popping.

- You'll need to re-record the audio track – make sure you close all other applications on your PC when you record.
- Try recording with Error Correction setting turned on.

Player turns itself off.

- Your player turns itself off if you leave it in pause mode or navigation mode for the duration specified in PowerSave setting.

The player cannot be turned on.

- Battery is empty.
- Ensure the keys lock is not activated.
- Reset the player by pressing and holding **⏻/MENU** for more than 10 seconds.
- If the player still cannot be turned on after resetting, perform a firmware upgrade to restore it.
- Please go to www.rcaaudiovideo.com for more details.

Player does not respond to key presses.

- If your player stops responding to key presses, you can reset it by pressing and holding **⏻/MENU** for more than 10 seconds. Most of your settings will be preserved; only the settings that you have changed after your last power off will be lost.

- This player may temporarily cease to function if subjected to electrostatic disturbance. To resume normal operation, it may be necessary to cycle the power off and back on or you can reset it by pressing and holding **⏻/MENU** for more than 10 seconds.

Player cannot play WMA songs.

- Secure music download files must be transferred to your player through the Windows Media Player or the application recommended by your online music download service (Note: Services and applications must be Windows Media audio-compliant and support Digital Rights Management.) (Apple iTunes music content is not supported).

The player takes a long time to read files in a folder.

- File reading may take longer if too many files are put in a single folder. Re-organize your files into a number of folders.

Song information is not showing correctly.

- Song information may not match your current player's language setting. Change the language setting.

Cannot view picture files.

- The player only supports .jpg extension file, and do not support other formats like .bmp, .tiff, .jpeg.

Cannot play video files.

- All video contents must be converted by RCA EasyRip software which comes with the player. Other format of video file will not be supported.

Cannot play audible files.

- Make sure the file format is correct. The player supports Format 4 Audible file.

The player reports that it is full.

- You have filled the capacity of the internal memory of the player.
- You have exceeded the maximum number of items that this player supports. Your player can only support up to 2000 media files within eight hierarchy of folder in maximum.

Additional information

Cannot playback tracks on the player.

- Make sure audio tracks are encoded in the mp3 or Windows Media formats at supported bitrates.
- Bitrates support by the player:
mp3 – 32 to 320 kbps
wma – 48 to 192 kbps
- WMA files may be DRM protected and you don't have the proper rights (license) to play the files.
- Check the website and/or application help system of the music download service provider from where the content was purchased from for license acquisition details. For more information on how license acquisition works, go to www.microsoft.com/windowsmedia/drm.

Cannot playback songs downloaded from my paid Music Server Provider subscription service.

- The internal clock in your portable player may not be up to date. Downloading a new subscription song from your Music Server Provider should update your player's clock and allow it to playback all your songs again.
- The license for your subscription songs may have expired. Synchronize your device with your PC again to obtain an update to your license. If the problem persists, please contact your Music Service Provider for additional support.

Cannot transfer subscription music content to the player.

- To enable function of transferring subscription music content, select *MTP* mode under *Protocol* in the *Settings* menu. Refer to page 28 for more information.

What is MTP mode?

- MTP (Media Transfer Protocol) mode is essential if you want to transfer DRM content to your player. In MTP mode your player will no longer show up as a drive letter. So programs that were designed to work with a player that shows up as a drive letter will not be able to work directly with the player.

Cannot launch RCA EasyRip installer stored in the player to install EasyRip on my PC.

- To enable function of launching RCA EasyRip installer stored in the player, select *MSC* mode under *Protocol* in the *Settings* menu. Refer to page 28 for more information.

Check for updates

Visit <http://www.rcaaudiovideo.com> for the latest news and firmware upgrades for our digital media player.

Specifications

Technical specification

Product: Digital Audio Player

Brand: RCA

Model: S2202, S2204, SC2202, SC2204

Electrical Consumption: 3.7V Lithium battery (built-in)

Hardware

- Dimensions: 72 mm H, 42 mm W, 15.7 mm D
- Unit Weight: 35g, 1.25oz
- Stereo Headphones jack
- USB Connection Jack
- Battery Operated: Rechargeable lithium battery.

USB Drive

- External USB Drive: When connected to a computer via USB, the player is capable of storing any file type allowing the user a fast, convenient method of storing, retrieving, and transferring files. This includes word processing files, presentations, spreadsheets and any other computer files.
- Capacity: S2202/SC2202 - 2 GB, S2204/SC2204 - 4 GB
- Connection: USB 2.0, Hi-speed capable

Software

- Includes the player applications and media management software.

Limited warranty

For US

What your warranty covers:

- Defects in materials or workmanship.

For how long after your purchase:

- One year from date of purchase.
- The warranty period for rental units begins with the first rental or 45 days from date of shipment to the rental firm, whichever comes first.

What we will do:

- Provide you with a new, or at our option, a refurbished unit. The exchange unit is under warranty for the remainder of the original product's warranty period.
- Proof of purchase in the form of a bill of sale or receipted invoice which is evidence that the product is within the warranty period must be presented to obtain warranty service. For rental firms, proof of first rental is also required.

How to make a warranty claim:

- Properly pack your unit. Include any cables, etc., which were originally provided with the product. We recommend using the original carton and packing materials.
- Include evidence of purchase date such as the bill of sale. Also print your name and address and a description of the defect. Send via standard UPS or its equivalent to:

Thomson Inc., Product Exchange Center, 11721B Alameda Avenue
Socorro, Texas 79927

- Insure your shipment for loss or damage. Thomson accepts no liability in case of damage or loss en route to Thomson.
- Pay any charges billed to you by the Exchange Center for service not covered by the warranty.
- A new or refurbished unit will be shipped to you freight prepaid.

What your warranty does not cover:

- Customer instruction. (Your Owner's Manual provides information regarding operating Instructions and user controls. For additional information, ask your dealer.)
- Installation and set-up service adjustments.
- Batteries.
- Damage from misuse or neglect.
- Products which have been modified or incorporated into other products.

- Products purchased or serviced outside the USA.
- Acts of nature, such as but not limited to lightning damage.

Product Registration:

- Please complete and mail the Product registration Card packed with your unit. It will make it easier to contact you should it ever be necessary. The return of the card is not required for warranty coverage.

Limitation of Warranty:

- THE WARRANTY STATED ABOVE IS THE ONLY WARRANTY APPLICABLE TO THIS PRODUCT. ALL OTHER WARRANTIES, EXPRESS OR IMPLIED (INCLUDING ALL IMPLIED WARRANTIES OF MERCHANTABILITY OR FITNESS FOR A PARTICULAR PURPOSE) ARE HEREBY DISCLAIMED. NO VERBAL OR WRITTEN INFORMATION GIVEN BY THOMSON INC., ITS AGENTS OR EMPLOYEES SHALL CREATE A WARRANTY OR IN ANY WAY INCREASE THE SCOPE OF THIS WARRANTY.
- REPAIR OR REPLACEMENT AS PROVIDED UNDER THIS WARRANTY IS THE EXCLUSIVE REMEDY OF THE CONSUMER. THOMSON INC. SHALL NOT BE LIABLE FOR INCIDENTAL OR CONSEQUENTIAL DAMAGES RESULTING FROM THE USE OF THIS PRODUCT OR ARISING OUT OF ANY BREACH OF ANY EXPRESS OR IMPLIED WARRANTY ON THIS PRODUCT. THIS DISCLAIMER OF WARRANTIES AND LIMITED WARRANTY ARE GOVERNED BY THE LAWS OF THE STATE OF INDIANA. EXCEPT TO THE EXTENT PROHIBITED BY APPLICABLE LAW, ANY IMPLIED WARRANTY OF MERCHANTABILITY OR FITNESS FOR A PARTICULAR PURPOSE ON THIS PRODUCT IS LIMITED TO THE APPLICABLE WARRANTY PERIOD SET FORTH ABOVE.

How state law relates to this warranty:

- Some states do not allow the exclusion nor limitation of incidental or consequential damages, or limitations on how long an implied warranty lasts, so the above limitations or exclusions may not apply to you.
- This warranty gives you specific legal rights, and you also may have other rights that vary from state to state.

If you purchased your product outside the USA:

- This warranty does not apply. Contact your dealer for warranty information.

Limited warranty

For Canada

Thomson multimedia Ltd. warrants to the purchaser or gift recipient that if any manufacturing defect becomes apparent in this product within 1 year from the original date of purchase, it will be replaced free of charge, including return transportation.

This warranty does not include damage to the product resulting from accidents, misuse or leaking batteries.

Should your product not perform properly during the warranty period, either:

1. Return it to the selling dealer with proof of purchase for replacement,


OR

2. Call 1-800-522-0338 (English) or 1-800-522-0445 (French) for instructions concerning where to mail the product.

The provisions of this written warranty are in addition to and not a modification of or subtraction from the statutory warranties and other rights and remedies contained in any applicable legislation, and to the extent that any such provisions purport to disclaim, exclude or limit any such statutory warranties and other rights and remedies, such provisions shall be deemed to be amended to the extent necessary to comply therewith.

Illustrations contained within this publication are for representation only and subject to change.

The descriptions and characteristics given in this document are given as a general indication and not as a guarantee. In order to provide the highest quality product possible, we reserve the right to make any improvement or modification without prior notice. The English version serves as the final reference on all products and operational details should any discrepancies arise in other languages.



Audiovox Electronics Corp.,
150 Marcus Blvd, Hauppauge, NY 11788
1-800-878-5779
© 2008 Audiovox Electronics Corp.
Trademark(s) ® Registered
Marca(s) ® Registrada(s)
Marque(s) ® Déposée(s)
www.rcaaudiovideo.com