



WIRELESS SPEAKER

**QUICK
START
GUIDE**

SP251 QSG 00

Getting to know Bluetooth

Bluetooth wireless is a quick and easy way to connect a smartphone to a speaker or a headset. There are basically two steps to making Bluetooth work.

PAIRING: The two devices get to know each other.



CONNECTING: The two devices do something together (like play music).



This guide takes you through the steps to get started.

Step 1: Unpack

Make sure the following items came in this package.

Your speaker



Step 2: Charge the NRG GLO

Before you start using the HEX NRG GLO speaker for the first time, it's a good idea to charge it completely.

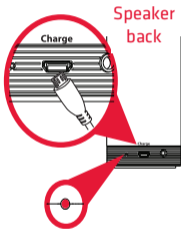
To charge the speaker:

Plug the included USB cable into the **Charge** jack on the back of the speaker.

Plug the other end of the USB charging cable into a power source, like a computer or a USB charging adapter.

The charging indicator on the back of the speaker is red while the speaker is charging. It turns green when the speaker is fully charged.

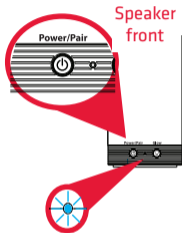
Note: You can use the speaker while it's charging.



Step 3: Turn on

Press and hold the **Power/Pair** button on the front of the speaker. The power up tone sounds and the indicator light on the front of the speaker starts blinking.

After a few seconds, the speaker goes to Bluetooth pairing mode to set up with your smartphone.



Step 4: Pair + Connect

Enable Bluetooth on your smartphone or other device.



Make sure the indicator light on the front of the speaker is blinking rapidly. (If it isn't, give a short press on the **Power/Pair** button. The speaker gives an audio signal.)



If you've previously paired your phone or other Bluetooth device with this speaker, the speaker will automatically attempt to reconnect to that device when you switch the speaker on. If you want to pair to a new device, give a short press to the **Power/Pair** button. The speaker gives a signal and the pairing indicator LED starts blinking.

Choose **808 NRG GLO** from the pairing options on your smartphone. (If it's not in the list, choose "Scan" from your phone's Bluetooth menu.)

The speaker gives an audio signal when it's finished pairing and connecting to your smartphone. The indicator light on the front of the speaker turns solid blue.

Note: The process of enabling Bluetooth and connecting varies from device to device. See your device's owners manual for more information and specific instructions.

Bluetooth Wireless Connection Tips

- Make sure the Bluetooth capability of your device is turned on.
- Make sure there's nothing plugged into the speaker's AUX IN jack when you're trying to use Bluetooth.
- The Bluetooth wireless connection works up to a range of roughly 33 feet (10 meters). This range may vary, however, based on other factors, such as room layout, wall material, obstacles, your device's Bluetooth performance, etc. If you're having problems connecting to this speaker, move closer to it.
- If your device asks you for a password to connect, use "0000".

Step 5: Play music

Set your device's volume for music to 75%.

Note: This is to make sure the sound from the speaker isn't too loud when you start streaming.



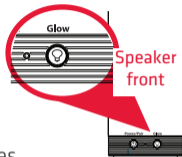
Start playing music or other audio on your device. Within seconds, the speaker starts streaming the audio wirelessly via Bluetooth.



To adjust the volume of your audio: Use the volume controls on your phone.

Step 6: Make it Glow!

Press the **Glow** button on the front of the speaker to activate the light ring around the top of the speaker. Keep pressing the Glow button to cycle through the five light modes.



Party Mode: The light ring pulses to the beat of your music (you might need to turn it up!).

Breath Mode: The light ring gradually intensifies and diminishes.

Chase Mode: A bead of light circles around the ring.

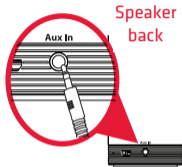
Solid Light

Dimmed Solid Light

Off

Using the Aux In input

Use a 3.5mm audio cable (not included) to connect the audio output from your device to the **Aux In** audio input on the speaker's back panel.

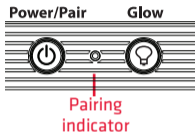


The speaker automatically switches to the **Aux In** audio, and the pairing indicator on the front of the speaker turns white.

To listen to Bluetooth audio again, unplug the cable from the speaker's **Aux In** jack. The speaker will try to reconnect to the last Bluetooth device.

Tour of the speaker

Power/Pair button turns the speaker on and off and puts the speaker into pairing mode to connect to a new Bluetooth device, like a smartphone. Press and hold to turn on/off. A short press enters pairing mode.



Pairing indicator shows the Bluetooth status of the speaker:

- fast blinking blue while pairing
- slow blinking blue while reconnecting
- solid blue when paired
- solid white when the Aux In jack is in use
- off when the speaker's off.

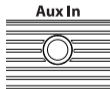
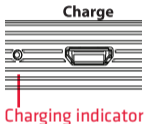
Glow button activates the light ring around the top of the speaker. Keep pressing it to cycle through the five light modes: *Party Mode*, *Breath Mode*, *Chase Mode*, *Solid Light*, *Dimmed Solid Light*, and *Off*.

Charging indicator shows the charging status of the speaker:

- solid red while charging
- solid green when charged

Charge jack connects to the provided USB charging cable to plug the speaker into a power source or adapter.

Aux In jack lets you connect an audio device directly to the speaker using a 3.5mm audio cable.



If you have any questions about this product, visit 808Audio.com or call our toll-free help line at 1-800-732-6866.